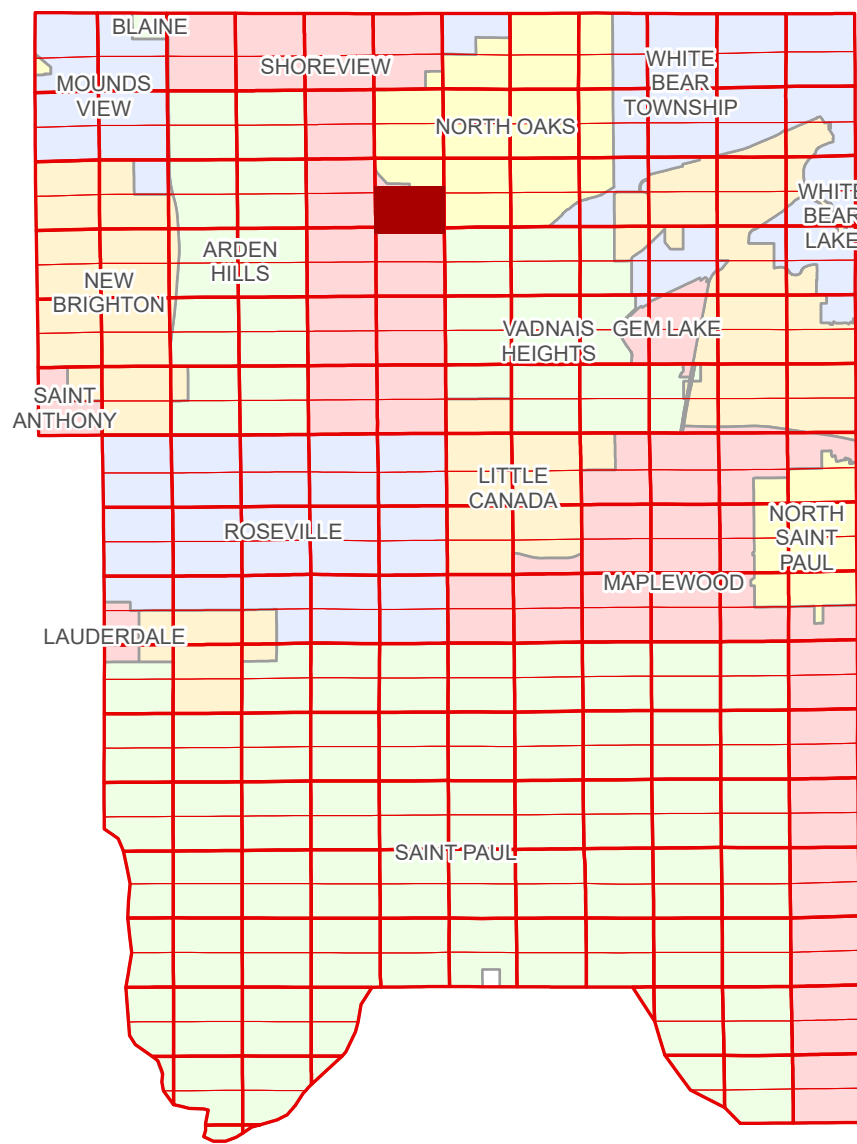


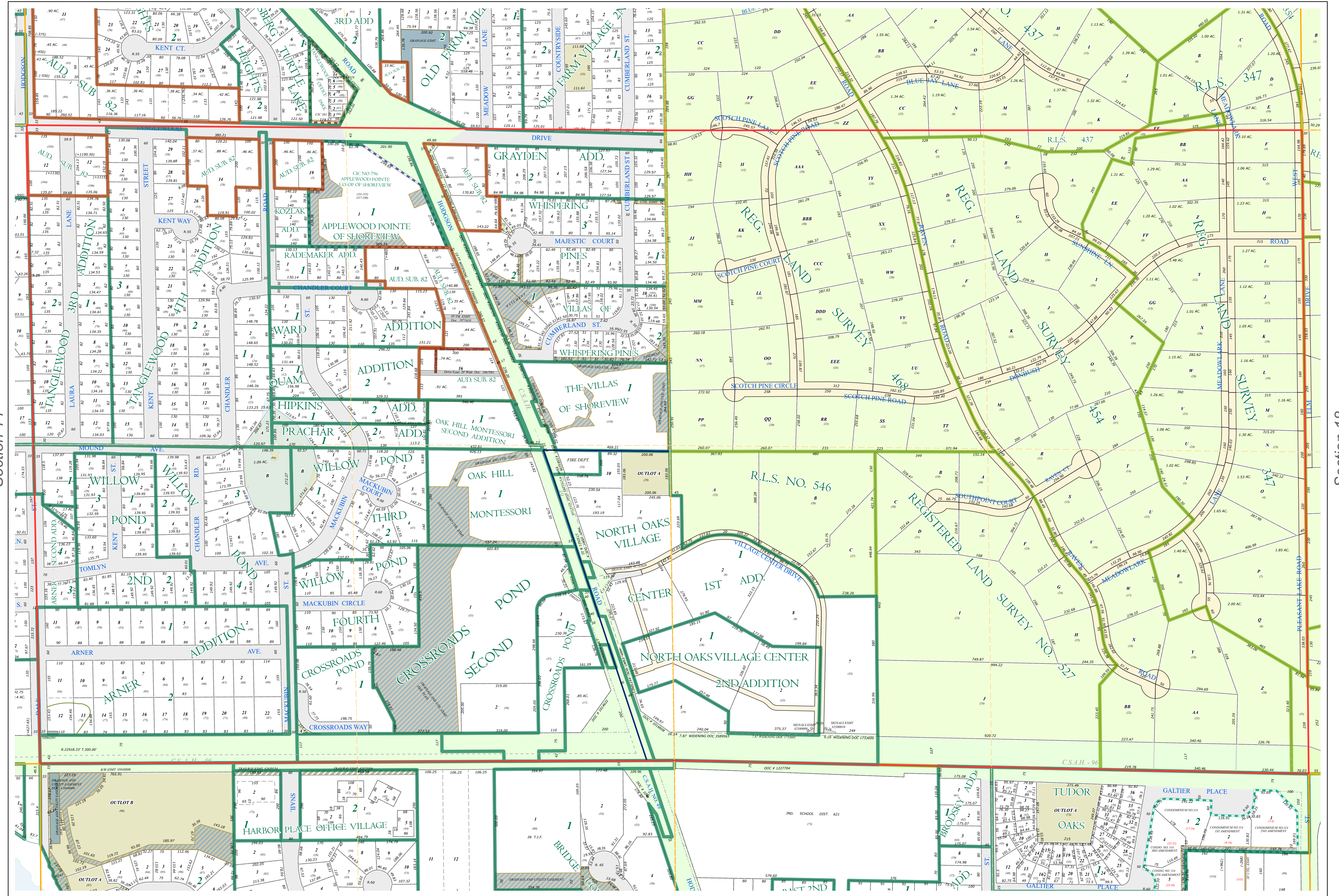
S Half
Section 13
T 30 N
R 23 W

Ramsey County Minnesota Parcel Map

Ramsey County
Section 13



Ramsey County
Section 14



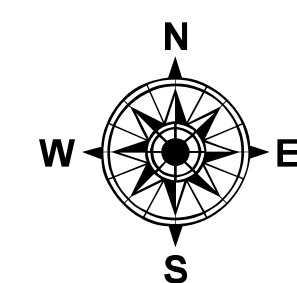
Section 18
Ramsey County

Legend			
	Section		Metes & Bounds
	Quarter		Tax Parcel Type
	Quarter Quarter		Real Property
	County Right of Way		Easement Type
	Municipal Right of Way		Private Access
	Subdivision Type		Private Driveway
	Subdivision Plat		Utility, Electric
	Registered Land Survey		Utility, Unidentified
	Auditors's Subdivision		Drainage & Utility
	Cooperative		Drainage
	Division Type		Misc Easements
	Lot		
	Outlot		
	Tract		

The information on this map is a compilation of Ramsey County Records. THE COUNTY DOES NOT WARRANT OR GUARANTEE THE ACCURACY OF THIS DATA. THE County disclaims any liability for any injuries, time delays, or expenses you may suffer if you rely in any manner on the accuracy of this data.
Produced by Information Services Enterprise GIS Division
RCGISMetaData@Co.Ramsey.MN.US

NOTE: This is not an official Ramsey County tax lot map. This is based on the data available in the Geographic Information System, which may vary from tax data officially recorded in the Tax System. For an official tax map, please contact the Office of Property Records and Revenue.
651-266-2000
AskPropertyTaxandRecords@co.ramsey.mn.us

Section 24
Ramsey County



0 450 180 270 360 Feet
1" = 200'
1:2,400

S133023

1/3/2025