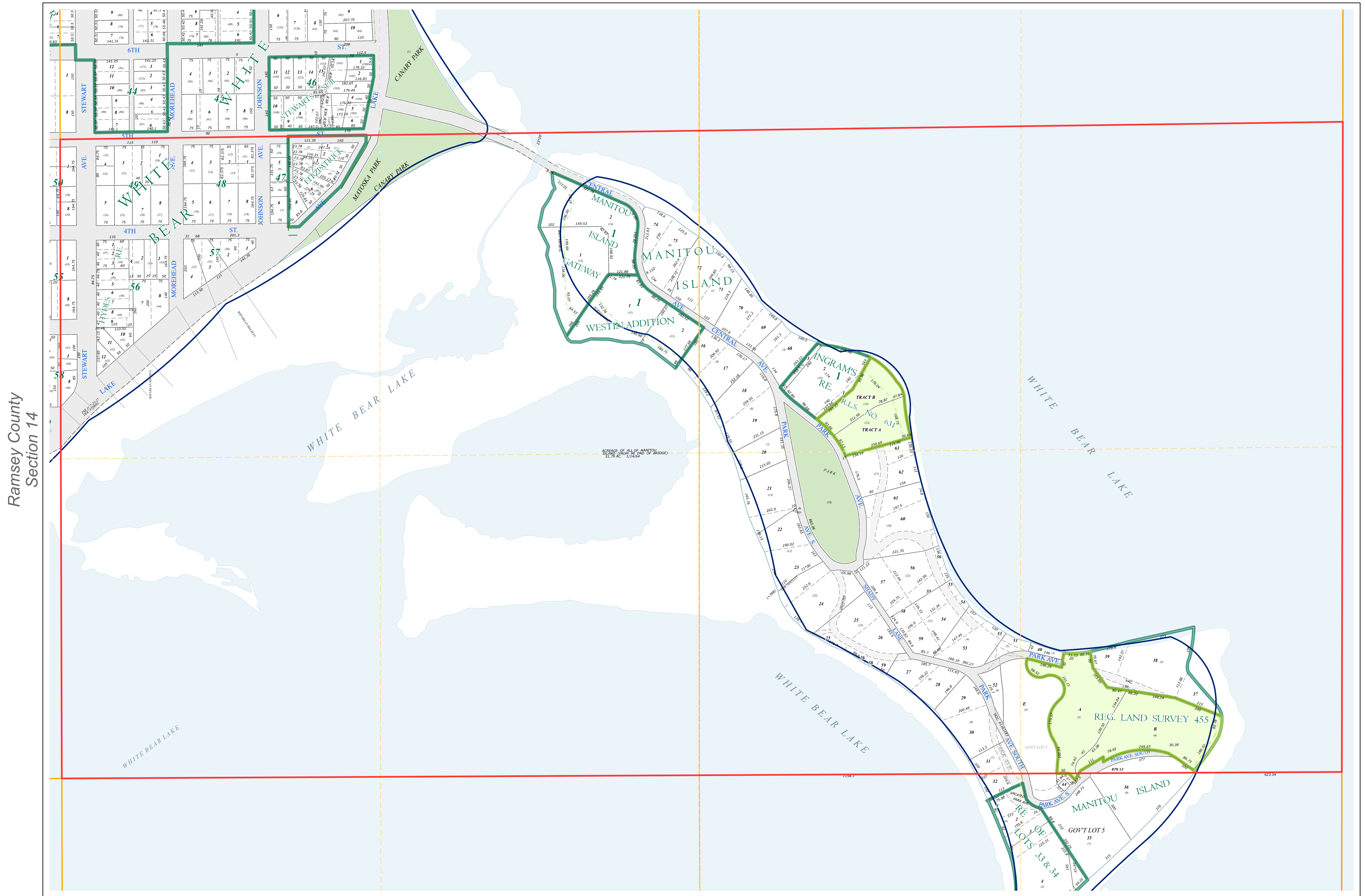
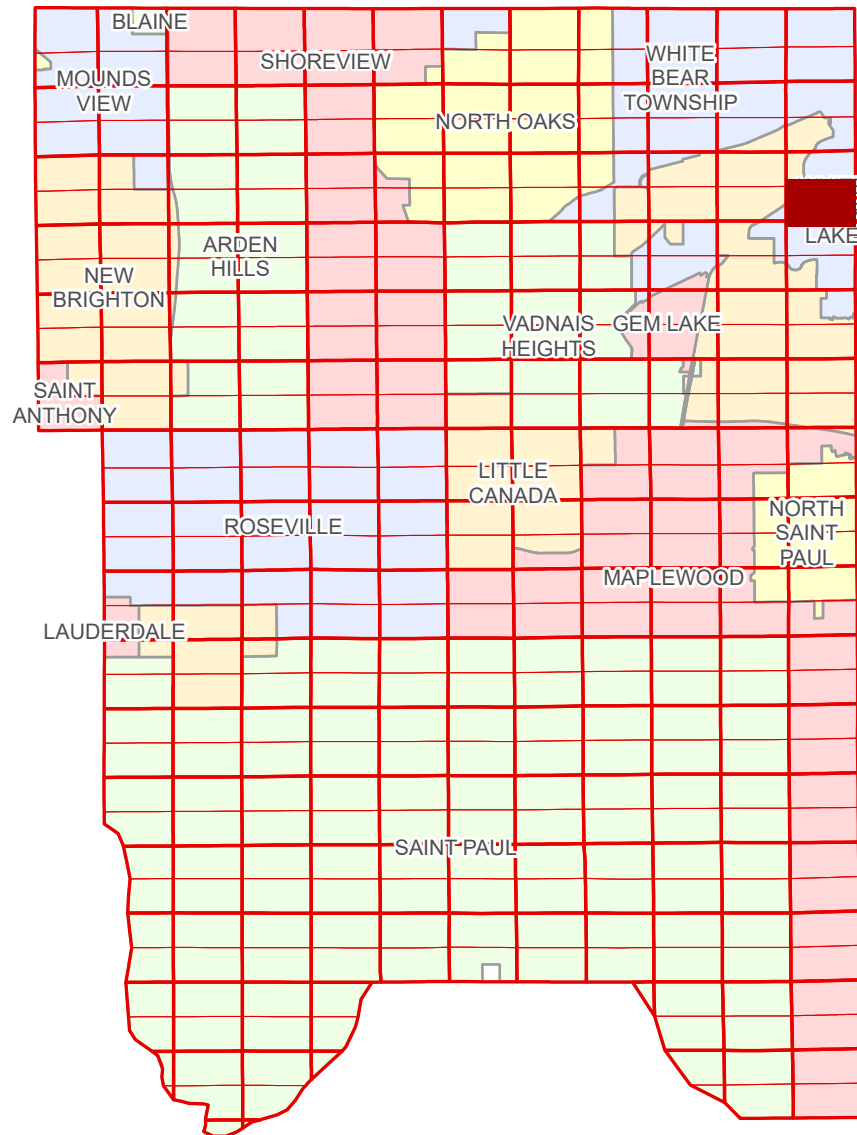


Ramsey County Minnesota Parcel Map

Ramsey County
Section 13

S Half
Section 13
T 30 N
R 22 W



Ramsey County
Section 14

Section 18
Washington County

Legend			
	Section		Division Type
	Quarter		Lot
	Quarter Quarter		Park
	Municipal Right of Way		Tract
	Subdivision Plat		Metes & Bounds
	Registered Land Survey		Tax Parcel Type
			Real Property
			Easement Type
			Private Driveway

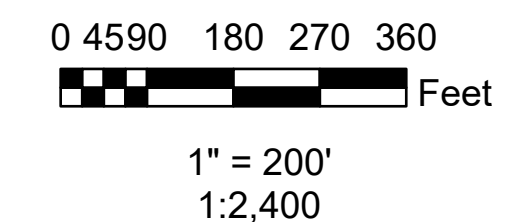
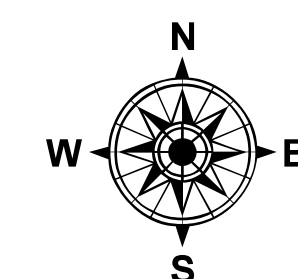
The information on this map is a compilation of Ramsey County Records. THE COUNTY DOES NOT WARRANT OR GUARANTEE THE ACCURACY OF THIS DATA. The County disclaims any liability for any injuries, time delays, or expenses you may suffer if you rely in any manner on the accuracy of this data.

Produced by Information Services Enterprise GIS Division
RCGISMetaData@Co.Ramsey.MN.US

NOTE: This is not an official Ramsey County tax lot map. This is based on the data available in the Geographic Information System, which may vary from tax data officially recorded in the Tax System. For an official tax map, please contact the Office of Property Records and Revenue.

651-266-2000
AskPropertyTaxandRecords@co.ramsey.mn.us

Section 24
Ramsey County



S133022
1/3/2025