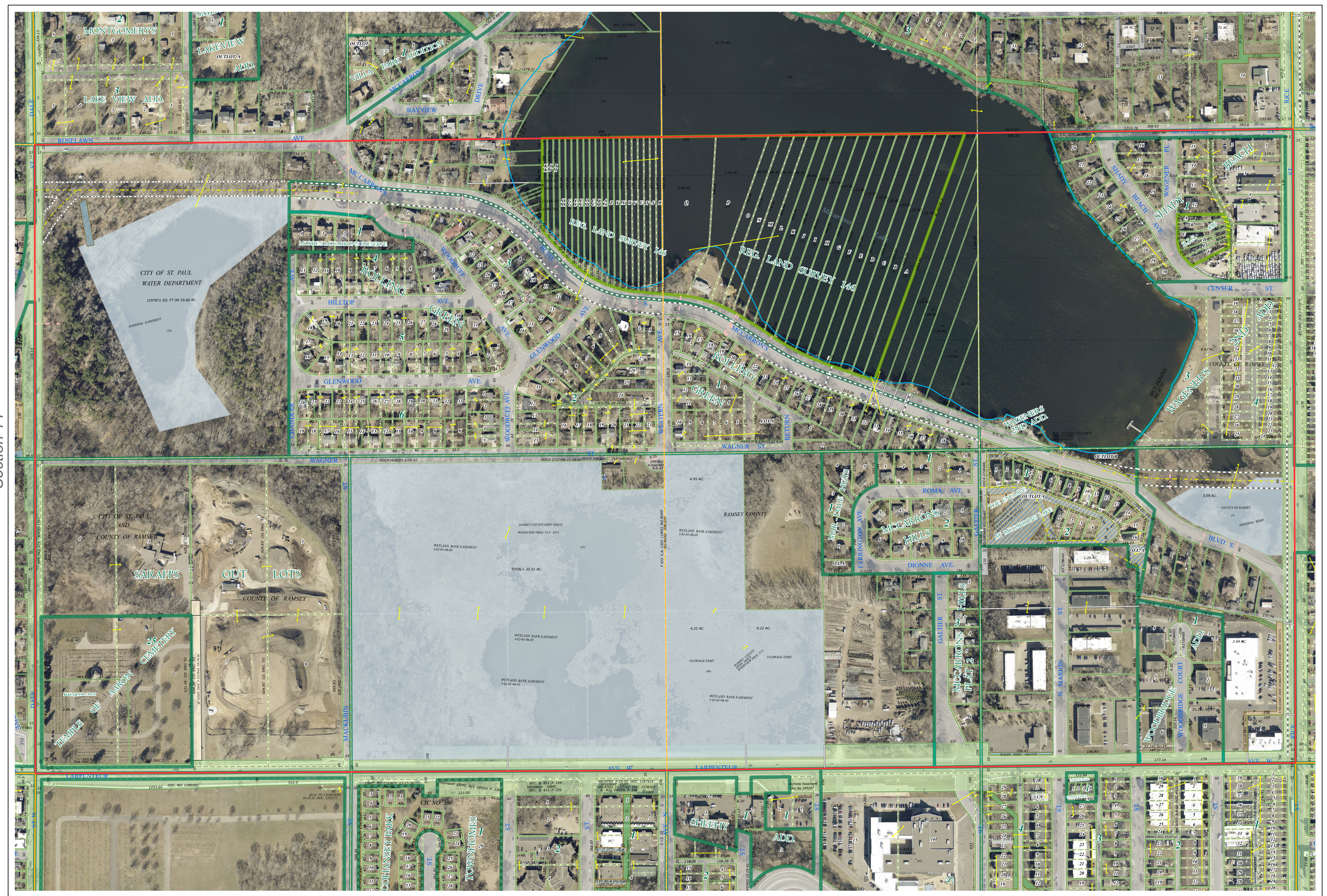
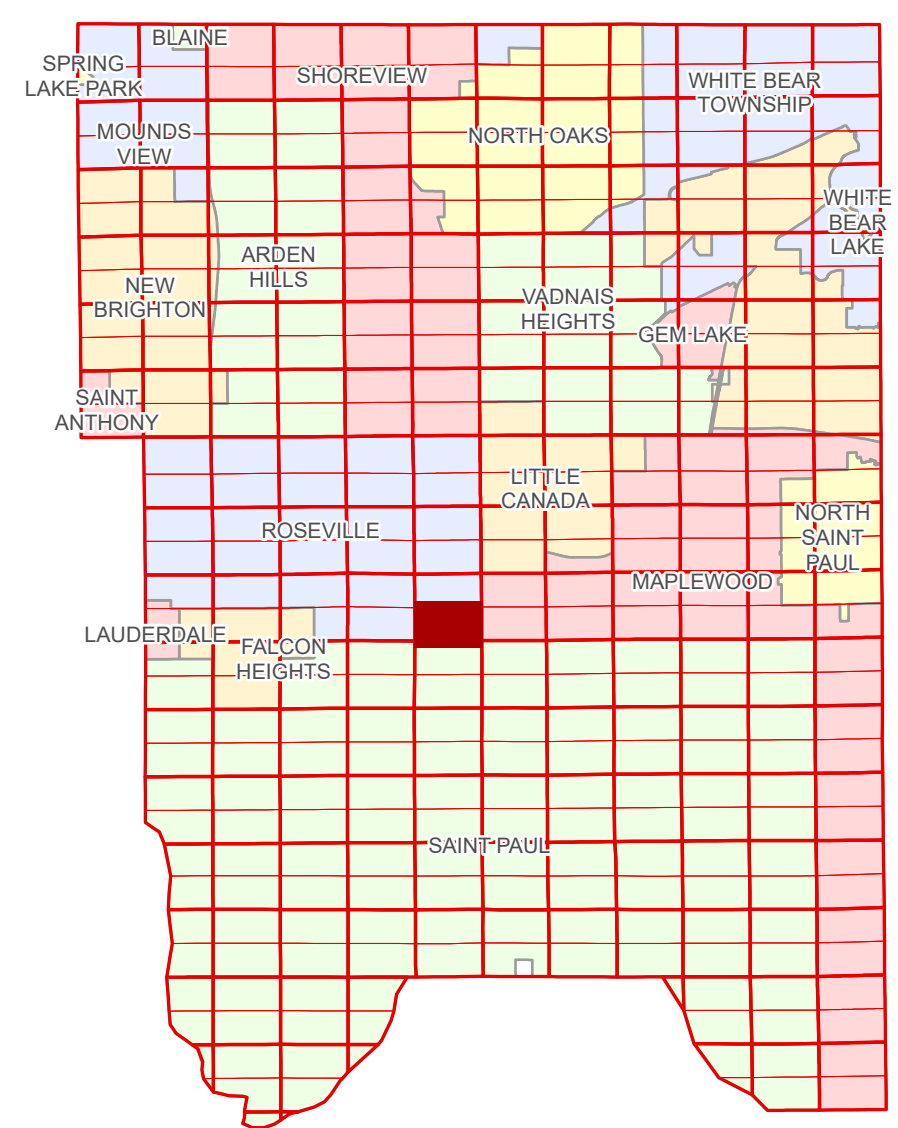


Ramsey County Minnesota Parcel Map

Ramsey County
Section 13

S Half
Section 13
T 29 N
R 23 W



Ramsey County
Section 14

Section 18
Ramsey County

Legend

	Section		Real Property
	Quarter		Easement Type
	Quarter Quarter		Ponding
	County Right of Way		Private Access
	Municipal Right of Way		Utility, Storm & Sanitary Sewer
	Subdivision Type		Utility, Water
	Subdivision Plat		Utility, Unidentified
	Registered Land Survey		Drainage & Utility
	Division Type		Drainage
	Lot		Misc Easements
	Metes & Bounds		

Aerial Imagery Date: March 11 - April 4, 2024



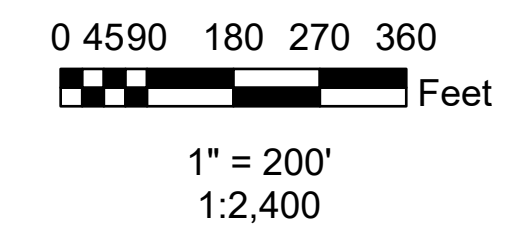
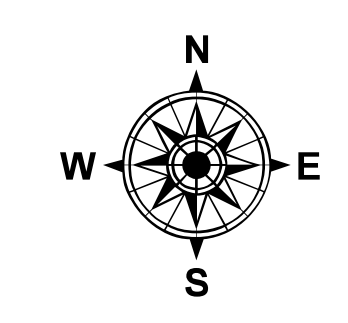
The information on this map is a compilation of Ramsey County Records. THE COUNTY DOES NOT WARRANT OR GUARANTEE THE ACCURACY OF THIS DATA. The County disclaims any liability for any injuries, time delays, or expenses you may suffer if you rely in any manner on the accuracy of this data.

Produced by Information Services Enterprise GIS Division
RCGISMetaData@Co.Ramsey.MN.US

NOTE: This is not an official Ramsey County tax lot map. This is based on the data available in the Geographic Information System, which may vary from tax data officially recorded in the Tax System. For an official tax map, please contact the Office of Property Records and Revenue.

651-266-2000
AskPropertyTaxandRecords@co.ramsey.mn.us

Section 24
Ramsey County



S132923
1/3/2025