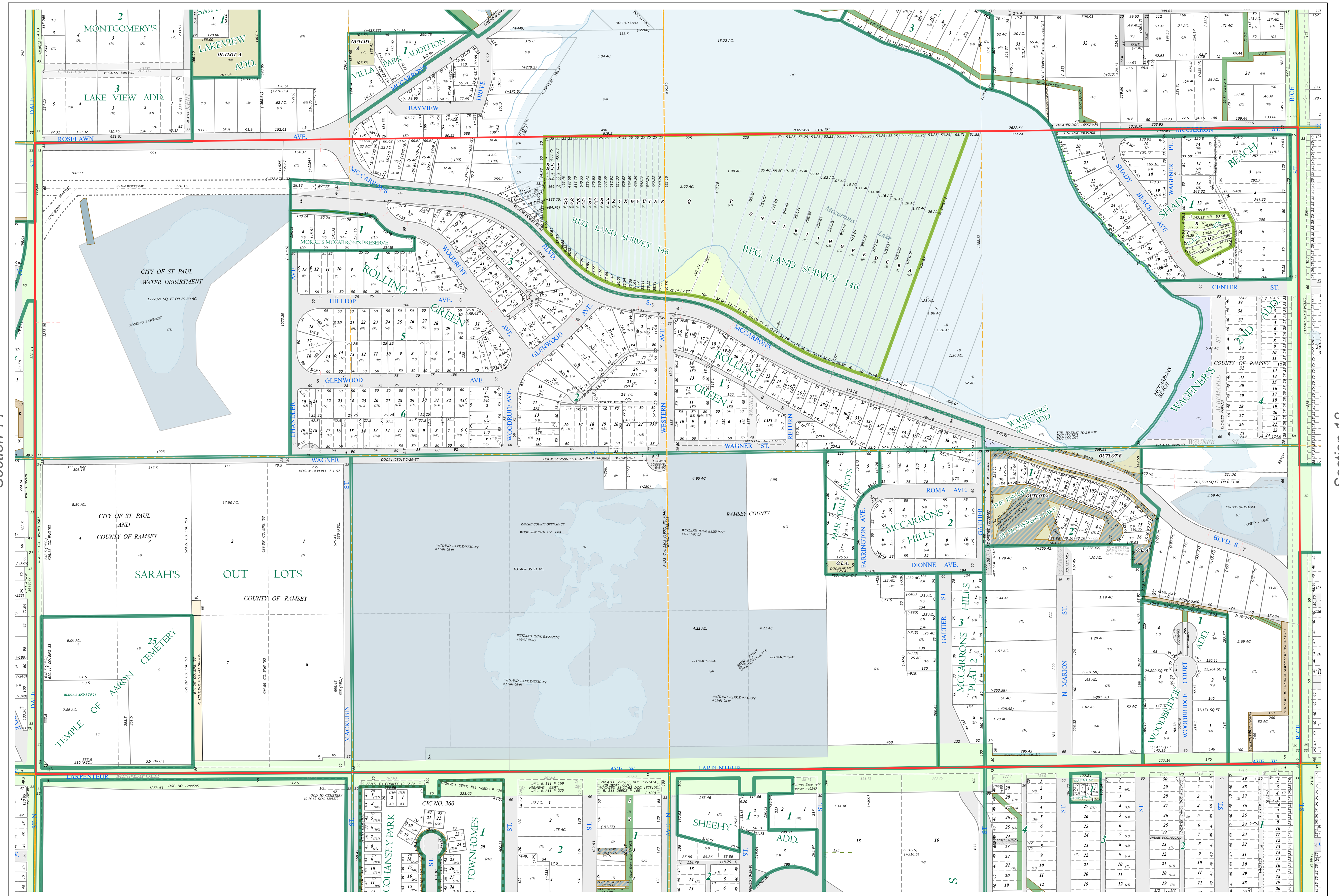
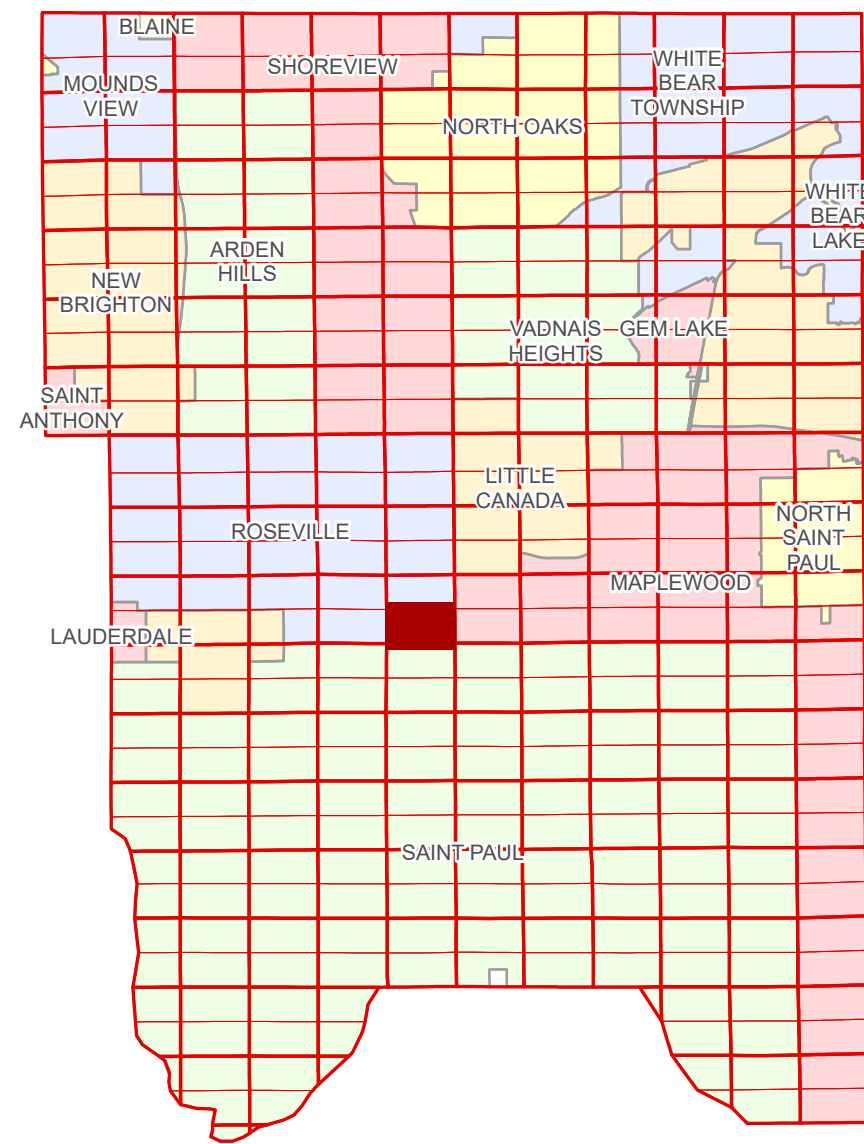


S Half  
Section 13  
T 29 N  
R 23 W

# Ramsey County Minnesota Parcel Map

Ramsey County  
Section 13



Ramsey County  
Section 14

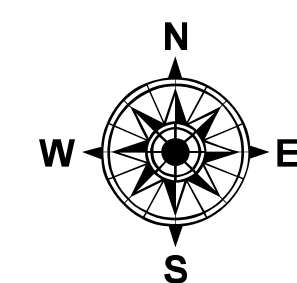
Section 18  
Ramsey County

Legend			
	Section		Metes & Bounds
	Quarter		Tax Parcel Type
	Quarter Quarter		Real Property
	County Right of Way		Easement Type
	Municipal Right of Way		Ponding
	Subdivision Type		Private Access
	Registered Land Survey		Utility, Storm & Sanitary Sewer
	Division Type		Utility, Water
	Lot		Utility, Unidentified
	Other		Drainage & Utility
	Outlot		Drainage
	Tract		Misc Easements

The information on this map is a compilation of Ramsey County Records. THE COUNTY DOES NOT WARRANT OR GUARANTEE THE ACCURACY OF THIS DATA. The County disclaims any liability for any injuries, time delays, or expenses you may suffer if you rely in any manner on the accuracy of this data.  
Produced by Information Services Enterprise GIS Division  
RCGISMetaData@Co.Ramsey.MN.US

NOTE: This is not an official Ramsey County tax lot map. This is based on the data available in the Geographic Information System, which may vary from tax data officially recorded in the Tax System. For an official tax map, please contact the Office of Property Records and Revenue.  
651-266-2000  
AskPropertyTaxandRecords@co.ramsey.mn.us

Section 24  
Ramsey County



0 4590 180 270 360  
Feet

1" = 200'

1:2,400

S132923

1/3/2025