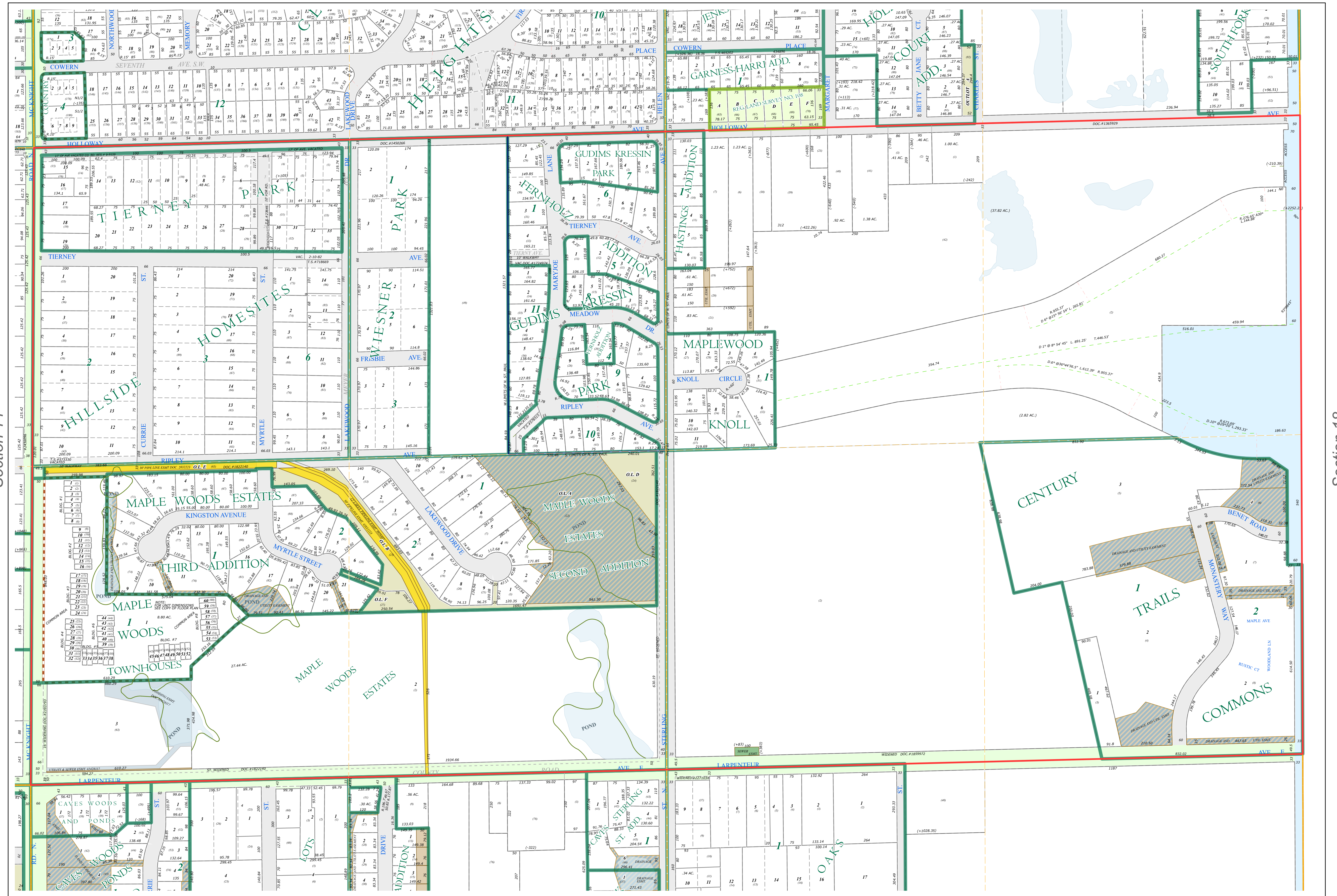
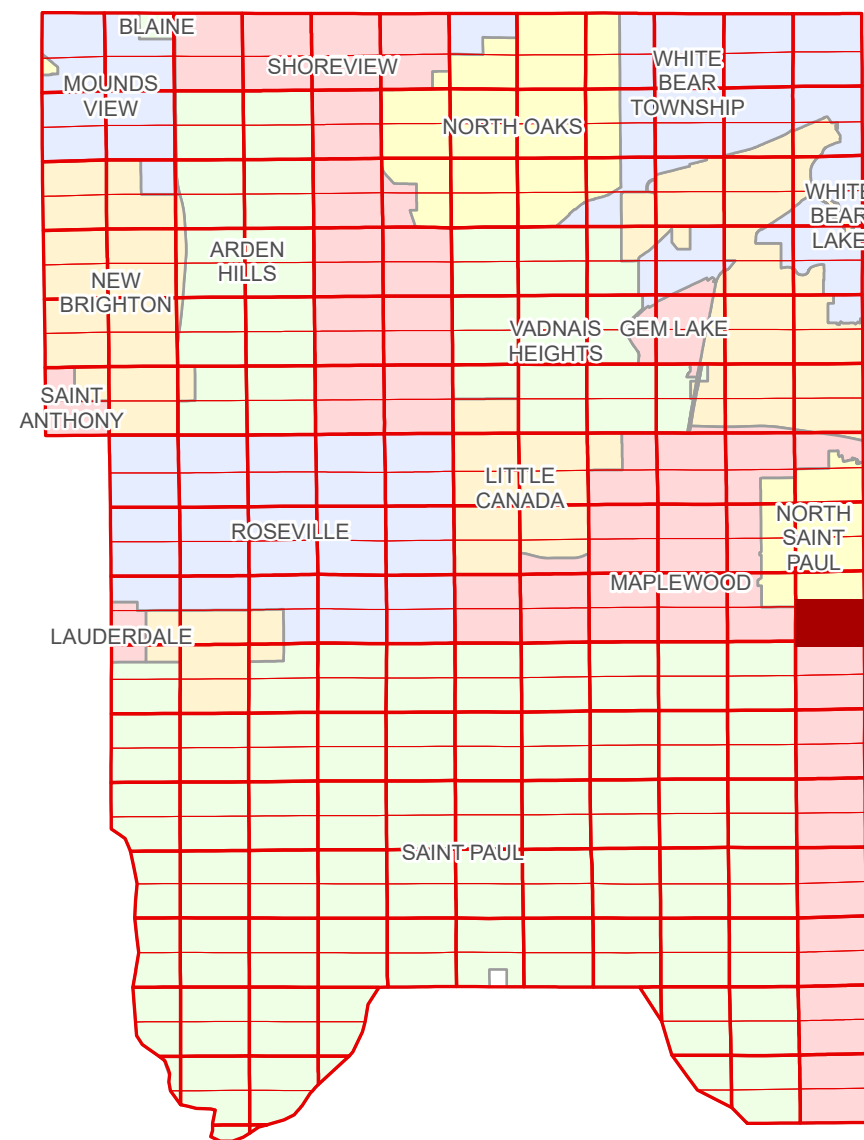


S Half  
Section 13  
T 29 N  
R 22 W

# Ramsey County Minnesota Parcel Map

Ramsey County  
Section 13



Ramsey County  
Section 14

Section 18  
Washington County

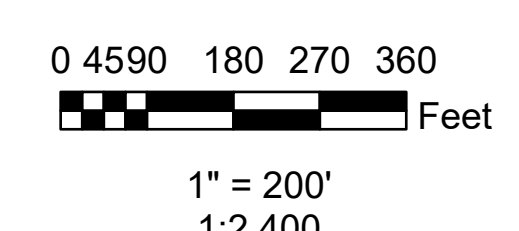
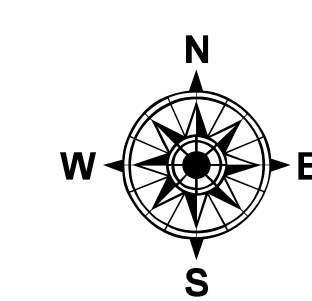
Section 24  
Ramsey County

**Legend**

- Section
- Quarter
- Quarter Quarter
- State Right of Way
- County Right of Way
- Municipal Right of Way
- Subdivision Type
- Planned Community
- Division Type
- Lot
- Outlot
- Tract
- Metes & Bounds
- Tax Parcel Type
- Real Property
- Easement Type
- Ponding
- Utility, Gas & Oil
- Utility, Storm & Sanitary Sewer
- Utility, Unidentified
- Drainage & Utility

The information on this map is a compilation of Ramsey County Records. THE COUNTY DOES NOT WARRANT OR GUARANTEE THE ACCURACY OF THIS DATA. The County disclaims any liability for any injuries, time delays, or expenses you may suffer if you rely in any manner on the accuracy of this data.  
Produced by Information Services Enterprise GIS Division  
RCGSMetaData@Co.Ramsey.MN.US

NOTE: This is not an official Ramsey County tax lot map. This is based on the data available in the Geographic Information System, which may vary from tax data officially recorded in the Tax System. For an official tax map, please contact the Office of Property Records and Revenue.  
651-266-2000  
AskPropertyTaxandRecords@co.ramsey.mn.us



**S132922**  
1/3/2025