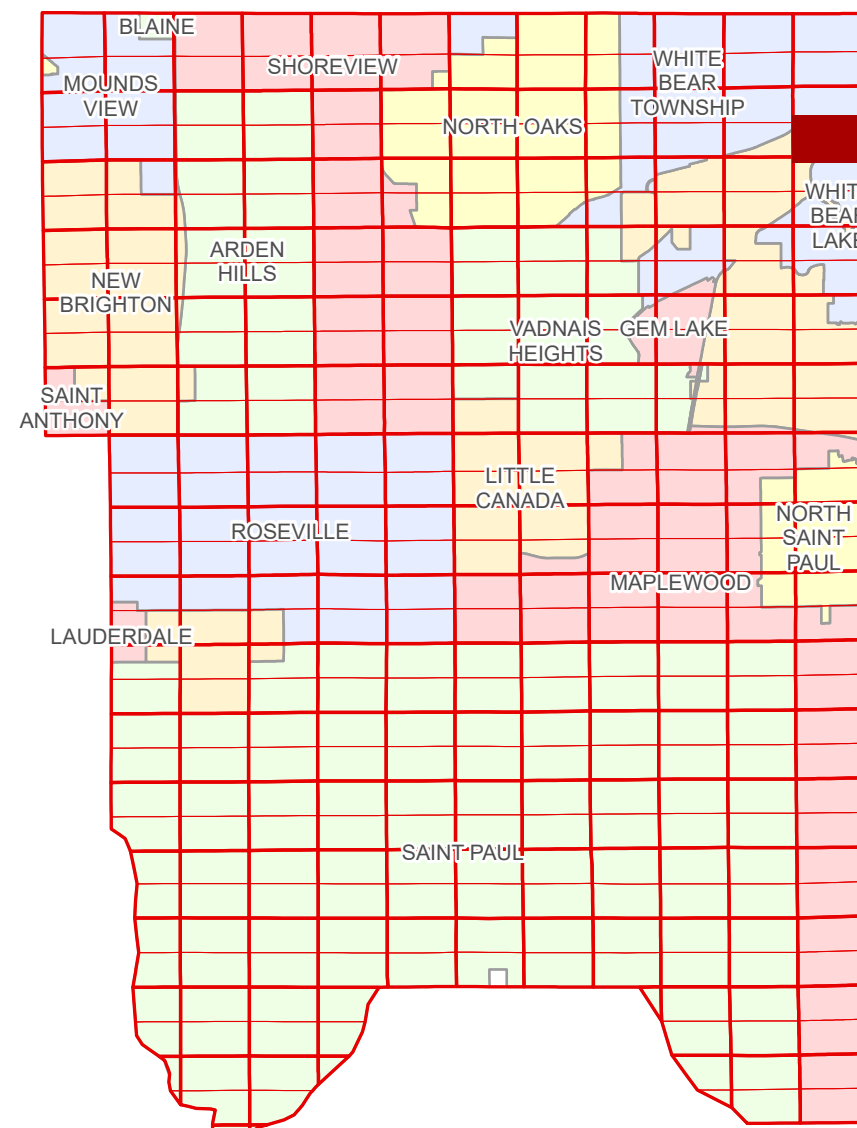


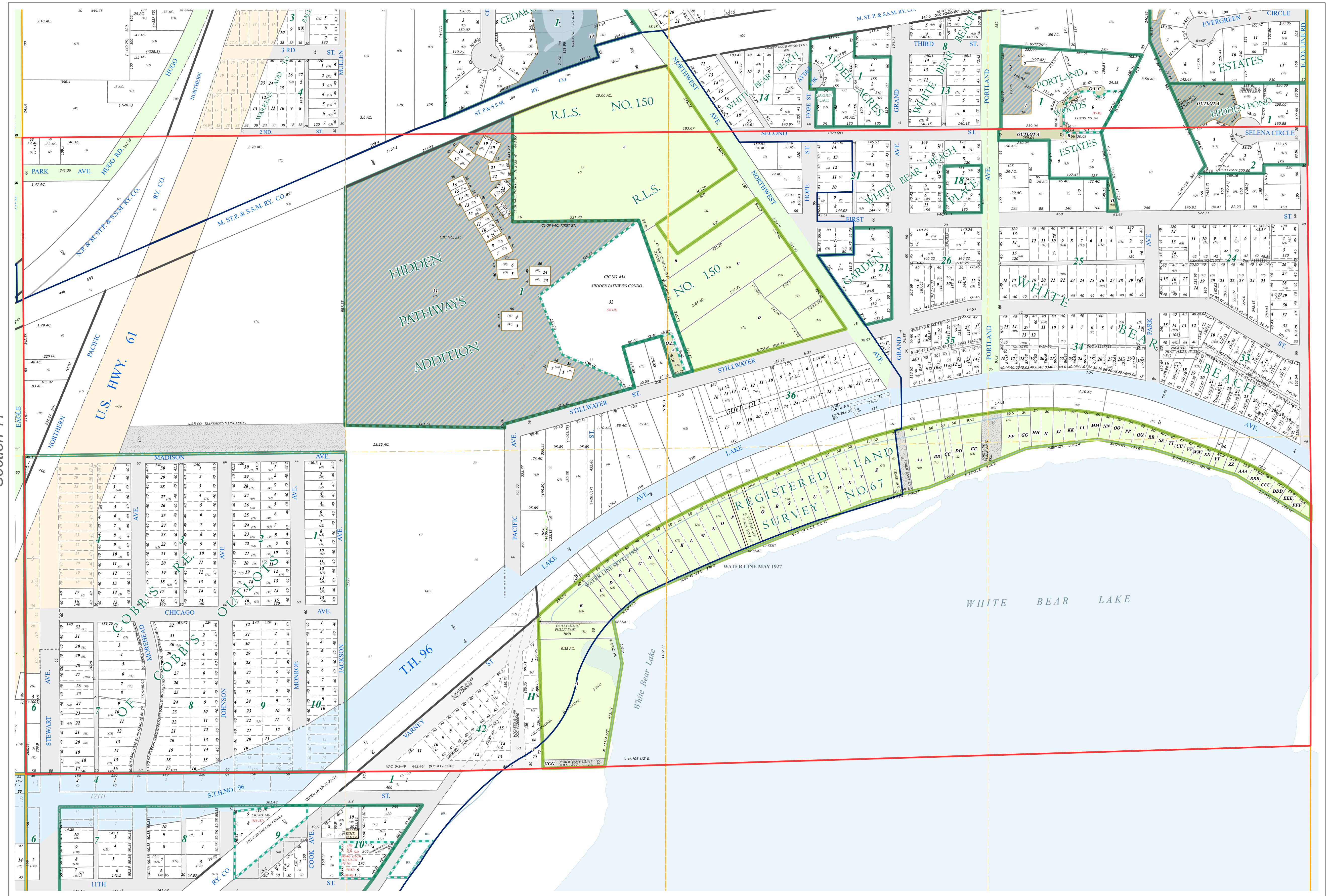
S Half
Section 12
T 30 N
R 22 W

Ramsey County Minnesota Parcel Map

Ramsey County
Section 12



Ramsey County
Section 11



Section 0
Washington County

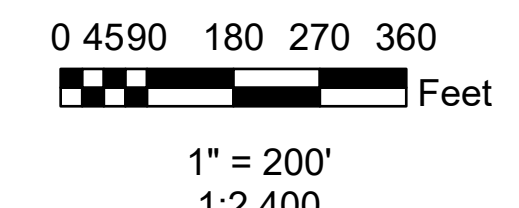
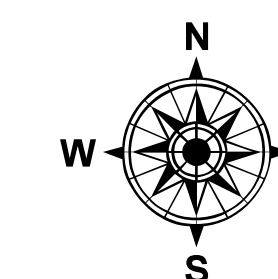
Legend

Section	Division Type
Quarter	Lot
Quarter Quarter	Outlot
Federal Right of Way	Tract
State Right of Way	Metes & Bounds
County Right of Way	Tax Parcel Type
Municipal Right of Way	State Assessed Property
Subdivision Type	Real Property
Subdivision Plat	Easement Type
Registered Land Survey	Private Access
Planned Community	Utility, Unidentified
Condominium	Drainage & Utility
	Misc Easements

The information on this map is a compilation of Ramsey County Records. THE COUNTY DOES NOT WARRANT OR GUARANTEE THE ACCURACY OF THIS DATA. THE County disclaims any liability for any injuries, time delays, or expenses you may suffer if you rely in any manner on the accuracy of this data.
Produced by Information Services Enterprise GIS Division
RCGSMetaData@Co.Ramsey.MN.US

NOTE: This is not an official Ramsey County tax lot map. This is based on the data available in the Geographic Information System, which may vary from tax data officially recorded in the Tax System. For an official tax map, please contact the Office of Property Records and Revenue.
651-266-2000
AskPropertyTaxandRecords@co.ramsey.mn.us

Section 13
Ramsey County



S123022

1/3/2025