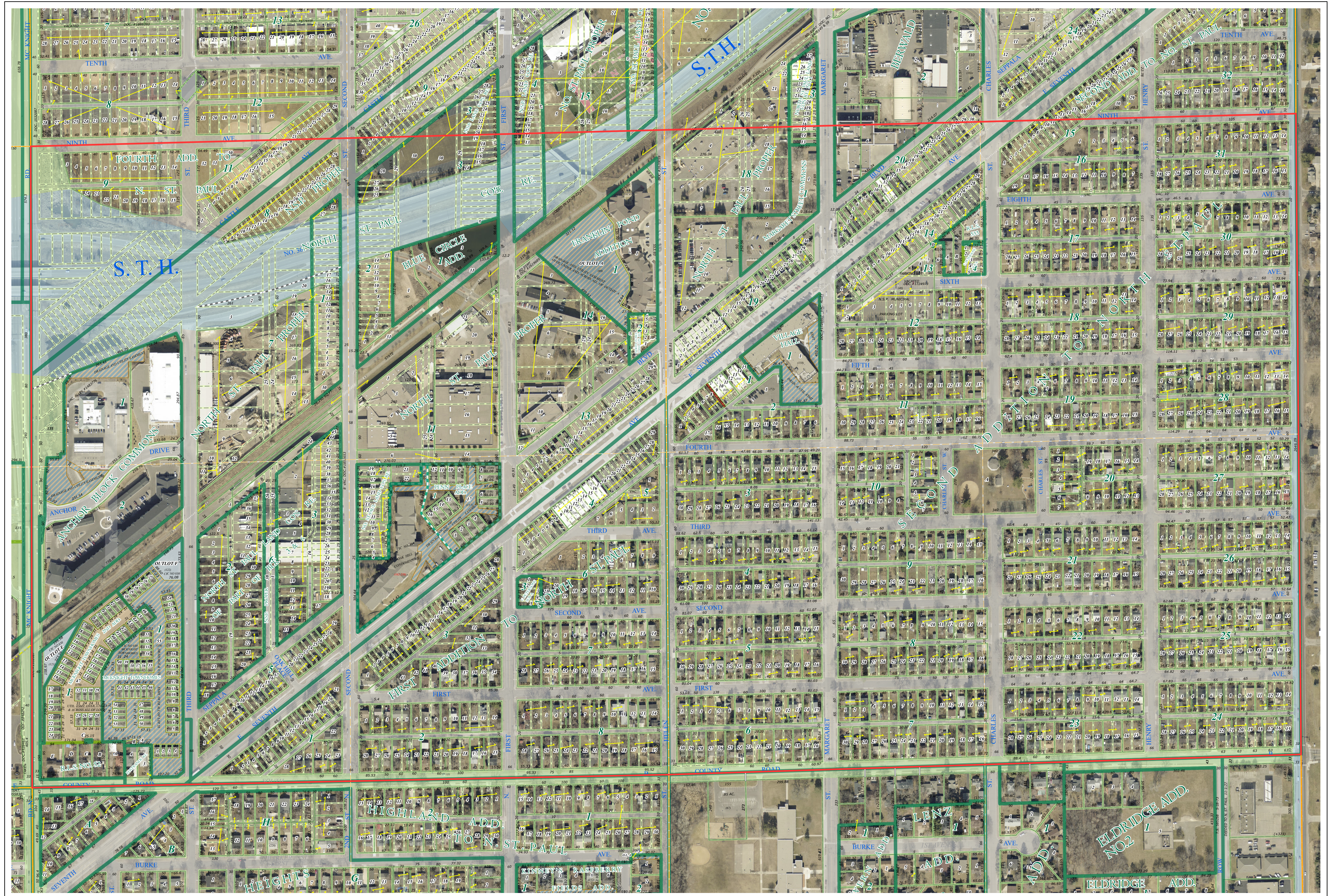
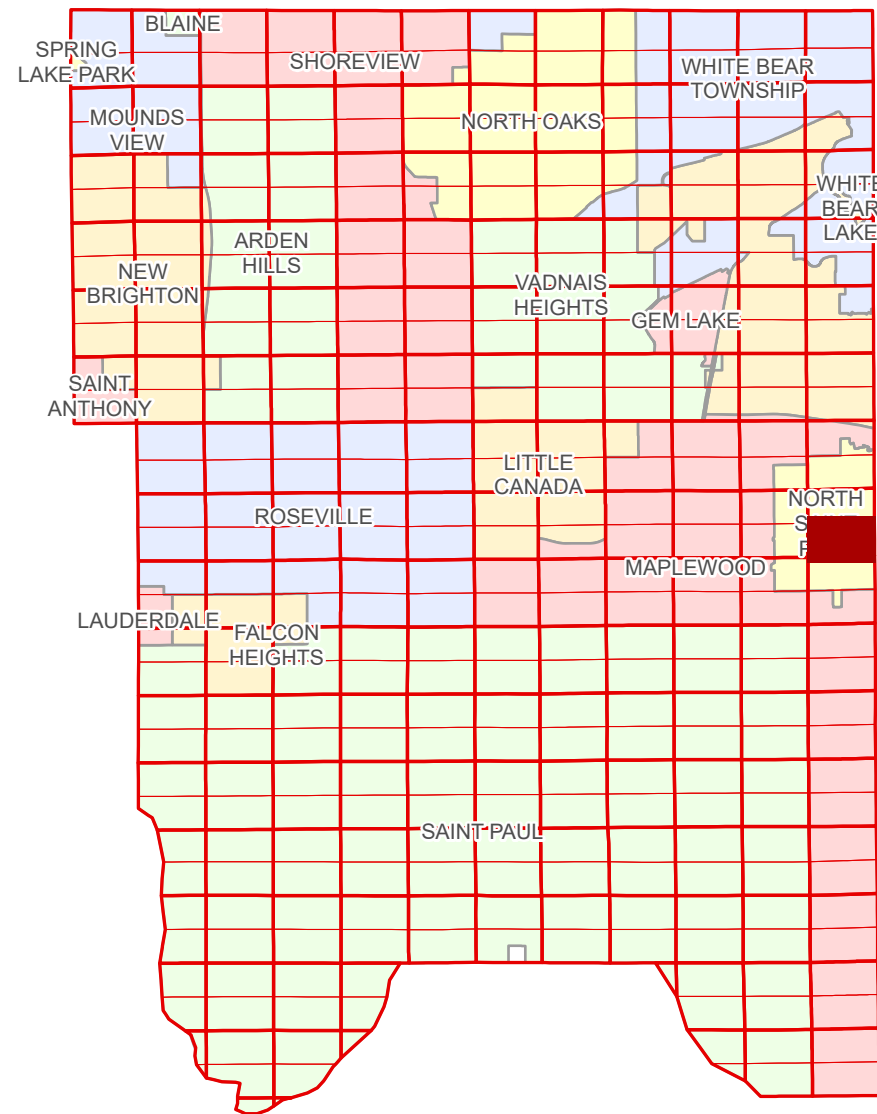


S Half  
Section 12  
T 29 N  
R 22 W

# Ramsey County Minnesota Parcel Map

Ramsey County  
Section 12



Ramsey County  
Section 11

Section 7  
Washington County

Legend			
	Section		Division Type
	Quarter		Lot
	Quarter Quarter		Metes & Bounds
	State Right of Way		Tax Parcel Type
	County Right of Way		Personal Property
	Municipal Right of Way		Real Property
	Subdivision Type		Easement Type
	Subdivision Plat		Ponding
	Registered Land Survey		Utility, Electric
	Planned Community		Utility, Unidentified
	Condominium		Drainage & Utility

Aerial Imagery Date: March 11 - April 4, 2024

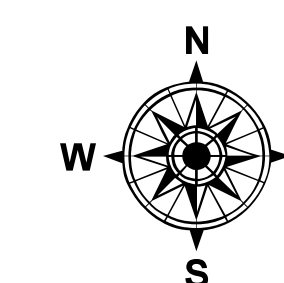


The information on this map is a compilation of Ramsey County Records. THE COUNTY DOES NOT WARRANT OR GUARANTEE THE ACCURACY OF THIS DATA. The County disclaims any liability for any injuries, time delays, or expenses you may suffer if you rely in any manner on the accuracy of this data.  
Produced by Information Services Enterprise GIS Division  
RCGSMetaData@Co.Ramsey.MN.US

NOTE: This is not an official Ramsey County tax lot map. This is based on the data available in the Geographic Information System, which may vary from tax data officially recorded in the Tax System. For an official tax map, please contact the Office of Property Records and Revenue.

651-266-2000  
AskPropertyTaxandRecords@co.ramsey.mn.us

Section 13  
Ramsey County



0 4590 180 270 360 Feet

1" = 200'  
1:2,400

S122922

1/3/2025