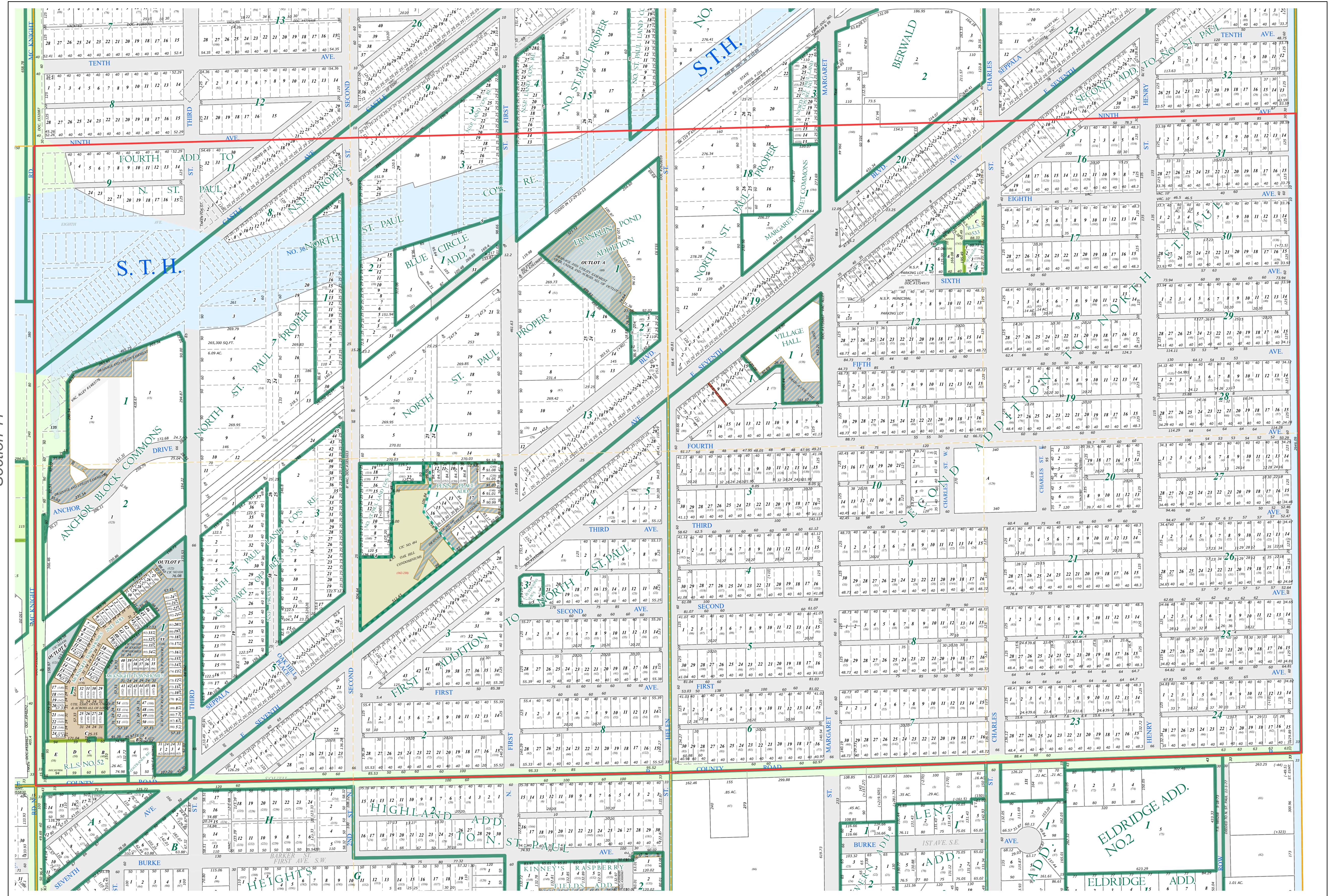
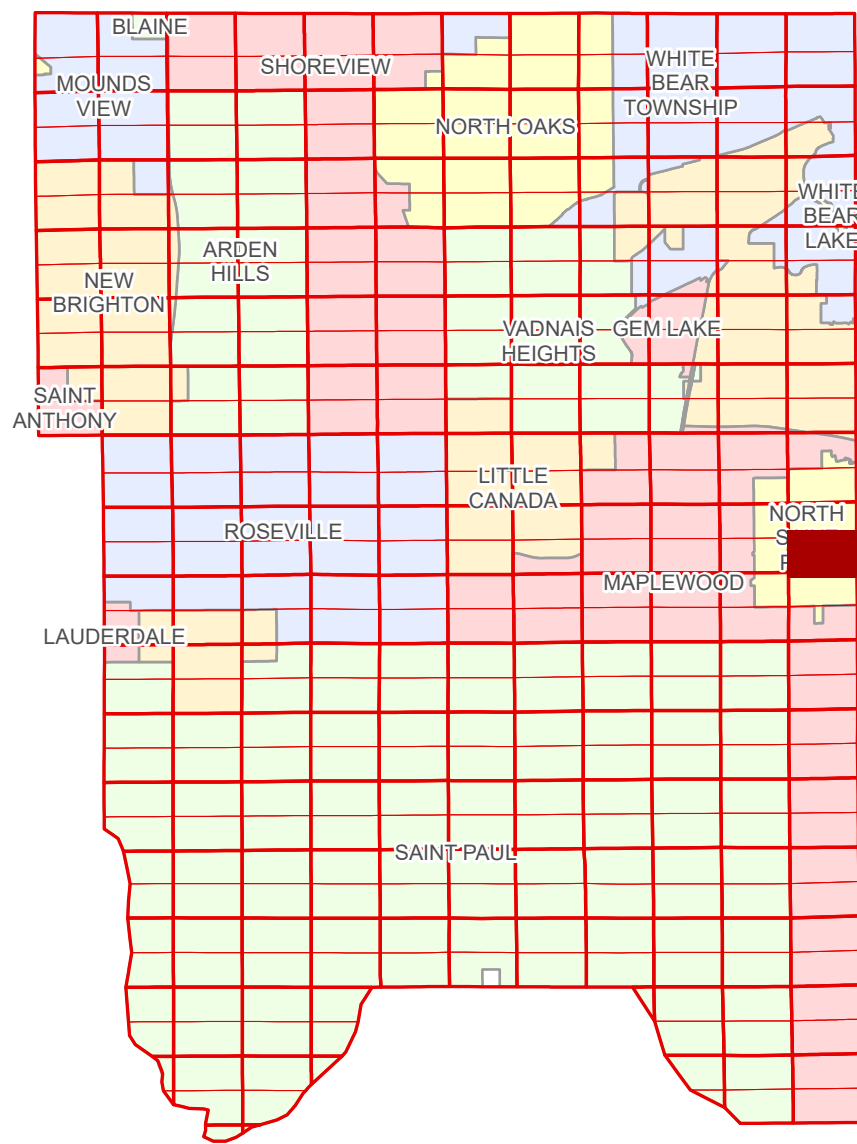


S Half  
Section 12  
T 29 N  
R 22 W

# Ramsey County Minnesota Parcel Map

Ramsey County  
Section 12



Ramsey County  
Section 11

Section 7  
Washington County

**Legend**

Section	Division Type
Quarter	Lot
Quarter Quarter	Outlot
State Right of Way	Tract
County Right of Way	Metes & Bounds
Municipal Right of Way	Tax Parcel Type
Subdivision Type	Personal Property
Subdivision Plat	Real Property
Registered Land Survey	Easement Type
Planned Community	Ponding
Condominium	Utility, Electric
	Utility, Unidentified
	Drainage & Utility

The information on this map is a compilation of Ramsey County Records. THE COUNTY DOES NOT WARRANT OR GUARANTEE THE ACCURACY OF THIS DATA. The County disclaims any liability for any injuries, time delays, or expenses you may suffer if you rely in any manner on the accuracy of this data.

NOTE: This is not an official Ramsey County tax lot map. This is based on the data available in the Geographic Information System, which may vary from tax data officially recorded in the Tax System. For an official tax map, please contact the Office of Property Records and Revenue.

Produced by Information Services Enterprise GIS Division  
RCGSMetaData@Co.Ramsey.MN.US

651-266-2000  
AskPropertyTaxandRecords@co.ramsey.mn.us

Section 13  
Ramsey County



0 4590 180 270 360 Feet

1" = 200'  
1:2,400

S122922  
1/3/2025