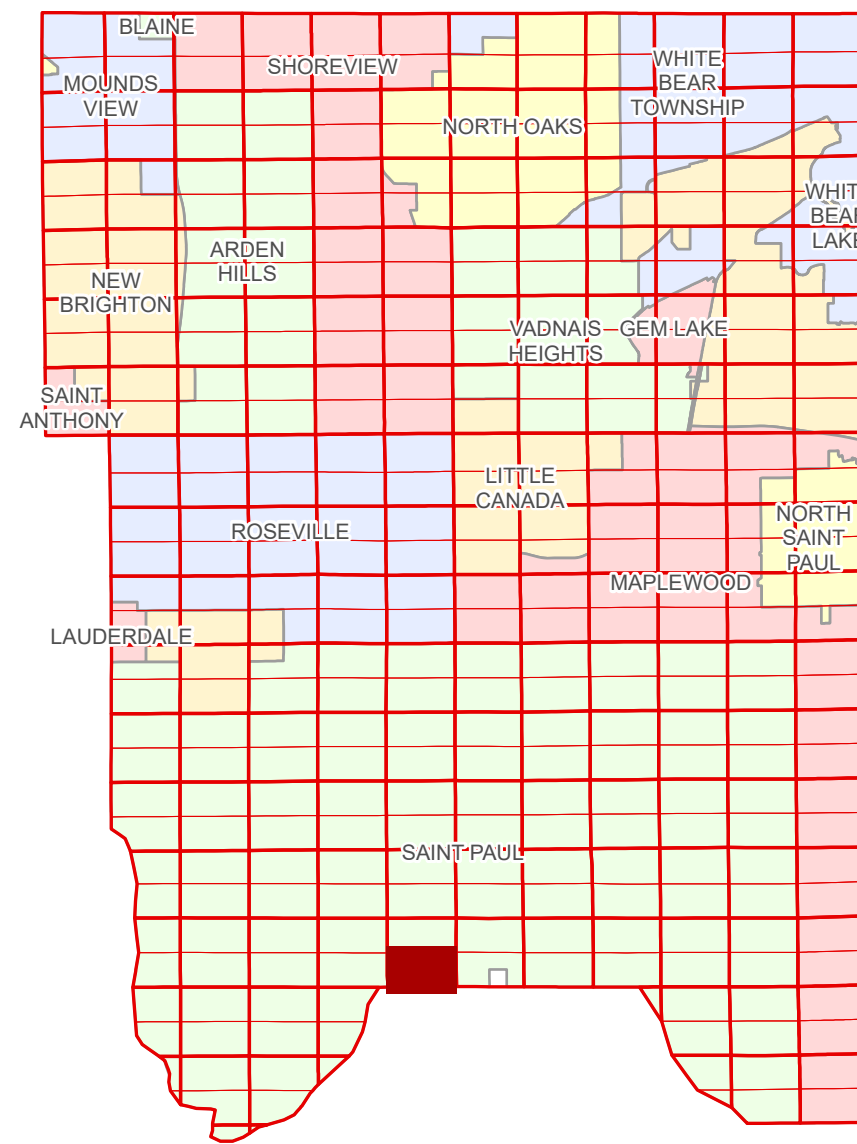


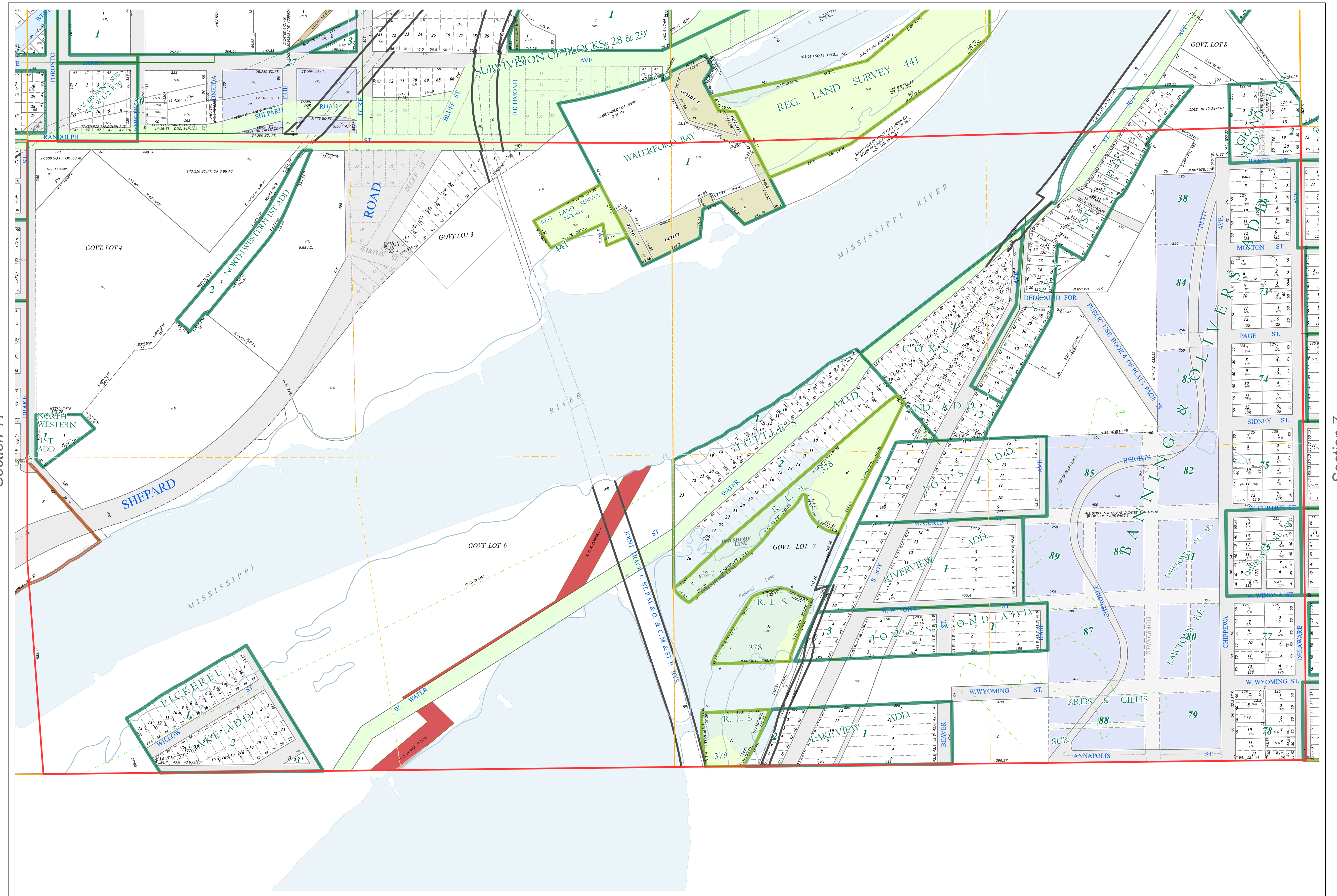
S Half
Section 12
T 28 N
R 23 W

Ramsey County Minnesota Parcel Map

Ramsey County
Section 12



Ramsey County
Section 11



Section 7
Ramsey County

Legend	
	Section
	Quarter
	Quarter Quarter
	County Right of Way
	Municipal Right of Way
	Subdivision Type Subdivision Plat Registered Land Survey Auditors's Subdivision
	Division Type Lot Other Outlot Tract Metes & Bounds
	Tax Parcel Type State Assessed Property Real Property
	Easement Type Utility, Electric

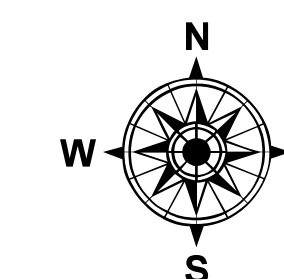
The information on this map is a compilation of Ramsey County Records. THE COUNTY DOES NOT WARRANT OR GUARANTEE THE ACCURACY OF THIS DATA. The County disclaims any liability for any injuries, time delays, or expenses you may suffer if you rely in any manner on the accuracy of this data.

Produced by Information Services Enterprise GIS Division
RCGISMetaData@Co.Ramsey.MN.US

NOTE: This is not an official Ramsey County tax lot map. This is based on the data available in the Geographic Information System, which may vary from tax data officially recorded in the Tax System. For an official tax map, please contact the Office of Property Records and Revenue.

651-266-2000
AskPropertyTaxandRecords@co.ramsey.mn.us

Section 13
Dakota County



0 4590 180 270 360
Feet

1" = 200'
1:2,400

S122823

1/3/2025