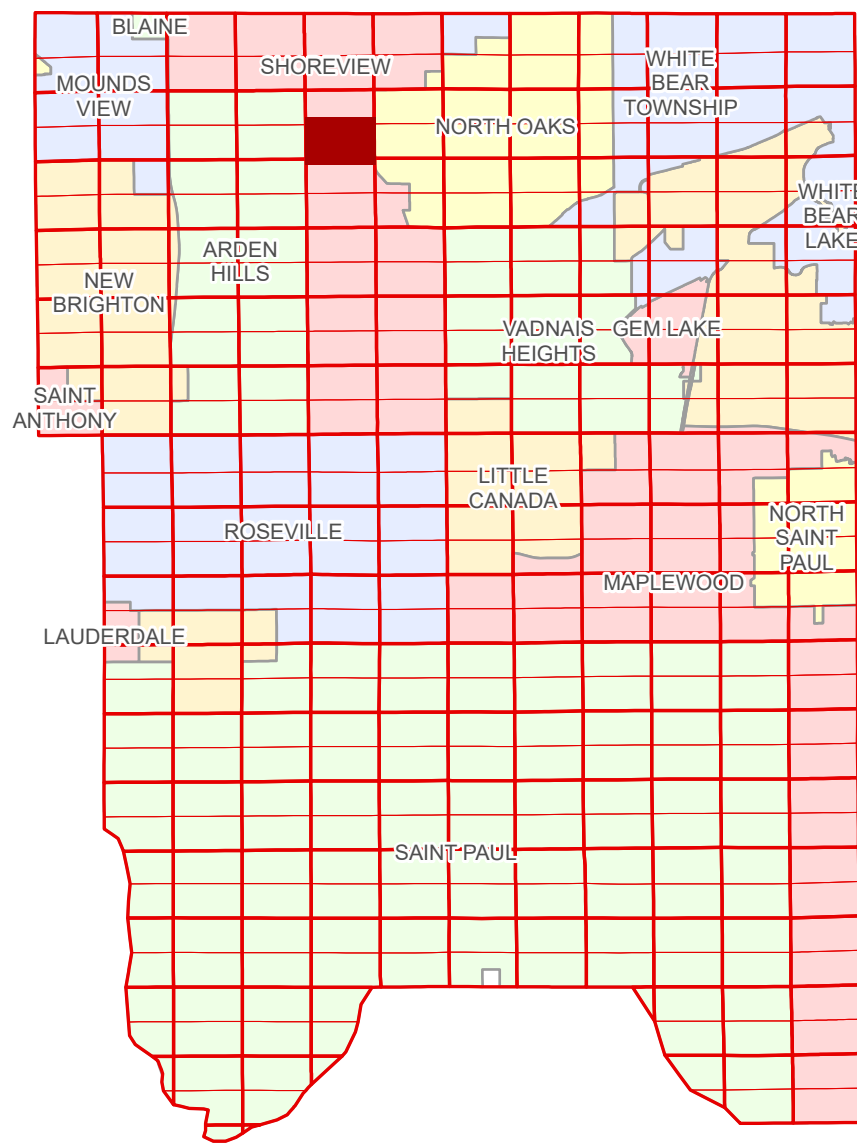


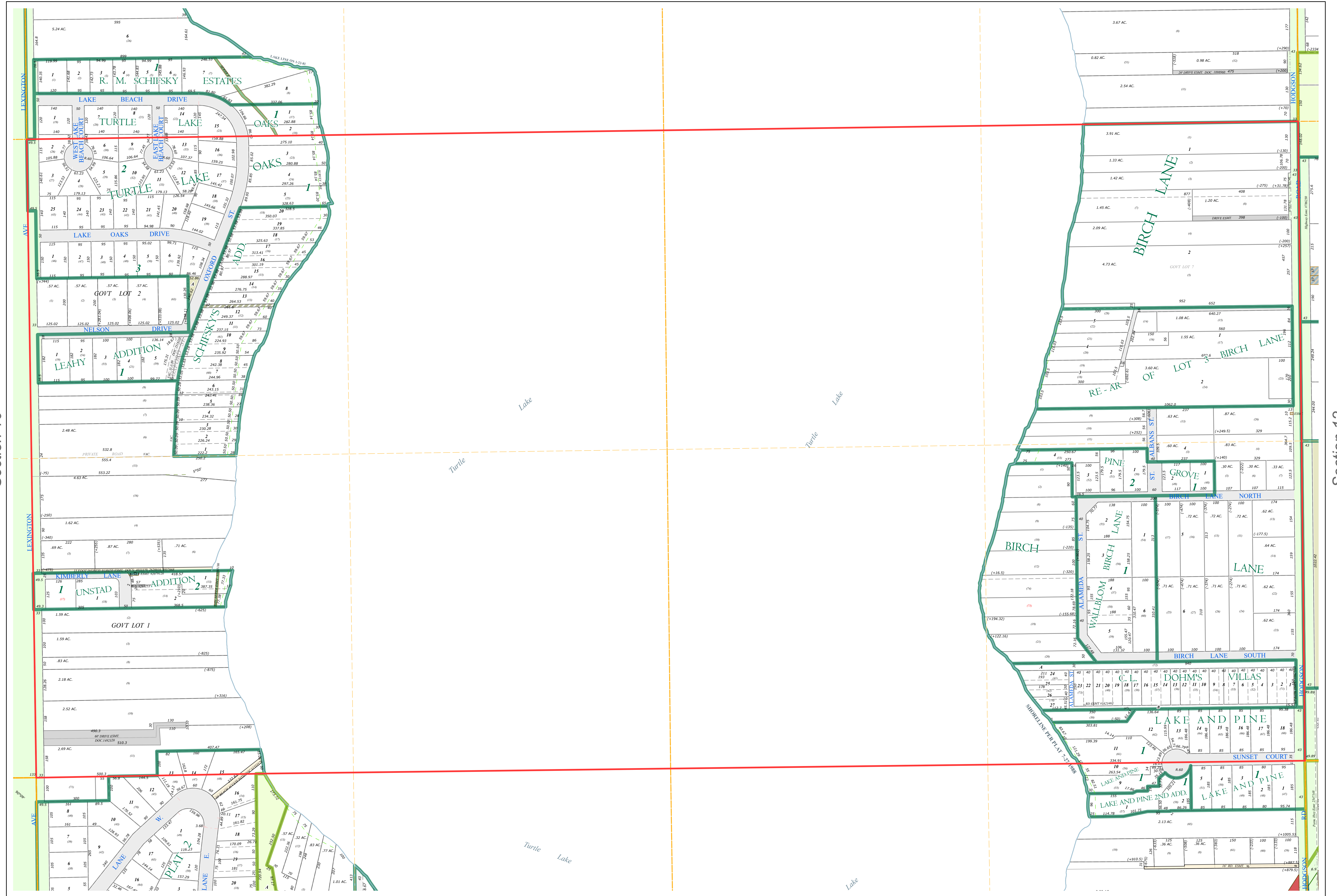
Ramsey County Minnesota Parcel Map

Ramsey County
Section 11

S Half
Section 11
T 30 N
R 23 W



Ramsey County
Section 10



Ramsey County
Section 12

Legend			
	Section		Metes & Bounds
	Quarter		Tax Parcel Type
	Quarter Quarter		Real Property
	County Right of Way		Easement Type
	Municipal Right of Way		Private Access
	Subdivision Type		Private Driveway
	Subdivision Plat		Utility, Storm & Sanitary Sewer
	Registered Land Survey		Utility, Water
	Division Type		Utility, Unidentified
	Lot		Misc Easements
	Outlot		
	Tract		

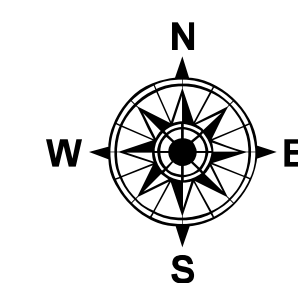
The information on this map is a compilation of Ramsey County Records. THE COUNTY DOES NOT WARRANT OR GUARANTEE THE ACCURACY OF THIS DATA. The County disclaims any liability for any injuries, time delays, or expenses you may suffer if you rely in any manner on the accuracy of this data.

Produced by Information Services Enterprise GIS Division
RCGISMetaData@Co.Ramsey.MN.US

NOTE: This is not an official Ramsey County tax lot map. This is based on the data available in the Geographic Information System, which may vary from tax data officially recorded in the Tax System. For an official tax map, please contact the Office of Property Records and Revenue.

651-266-2000
AskPropertyTaxandRecords@co.ramsey.mn.us

Section 14
Ramsey County



0 4590 180 270 360 Feet
1" = 200'
1:2,400

S113023

1/3/2025