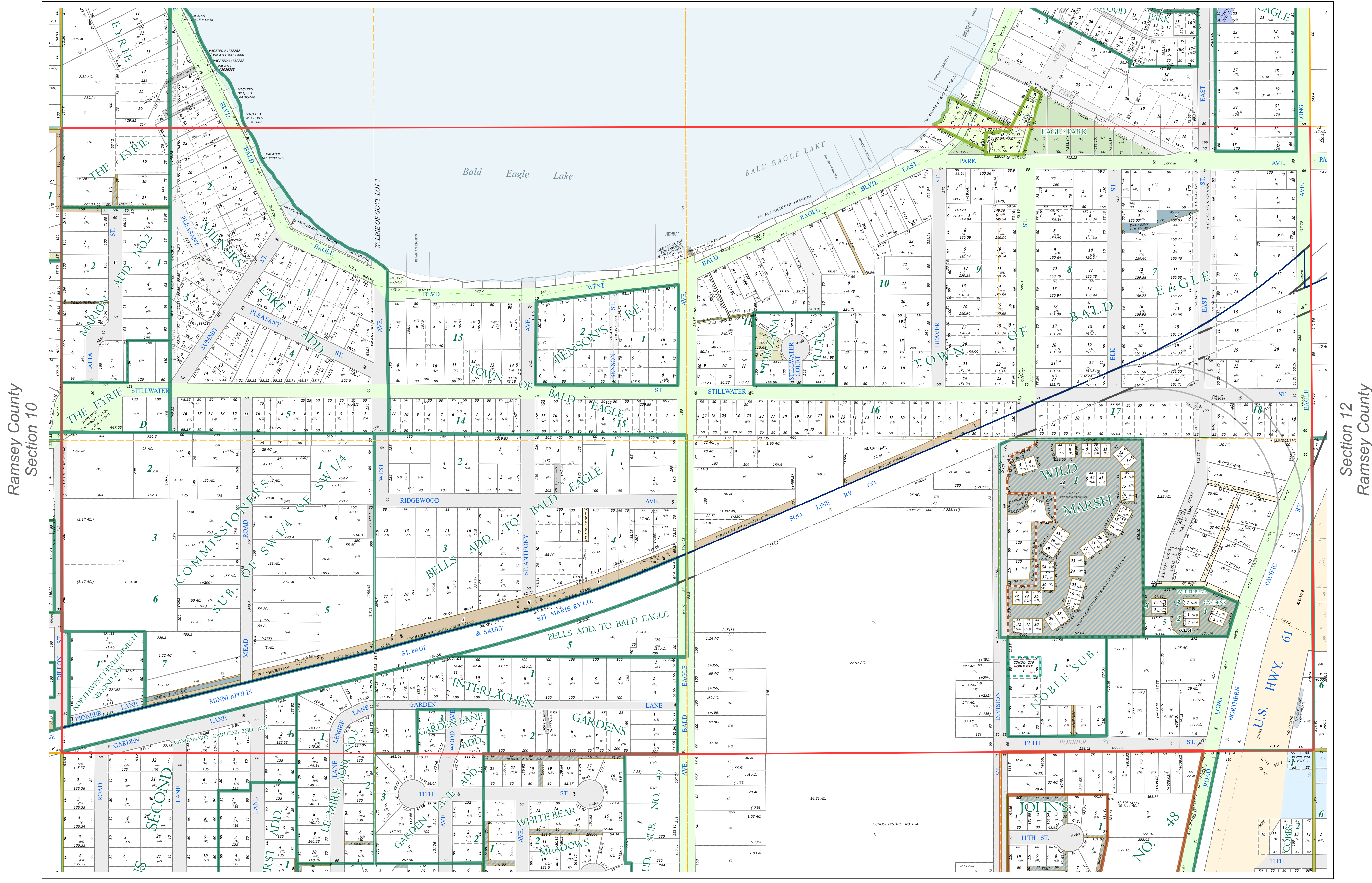
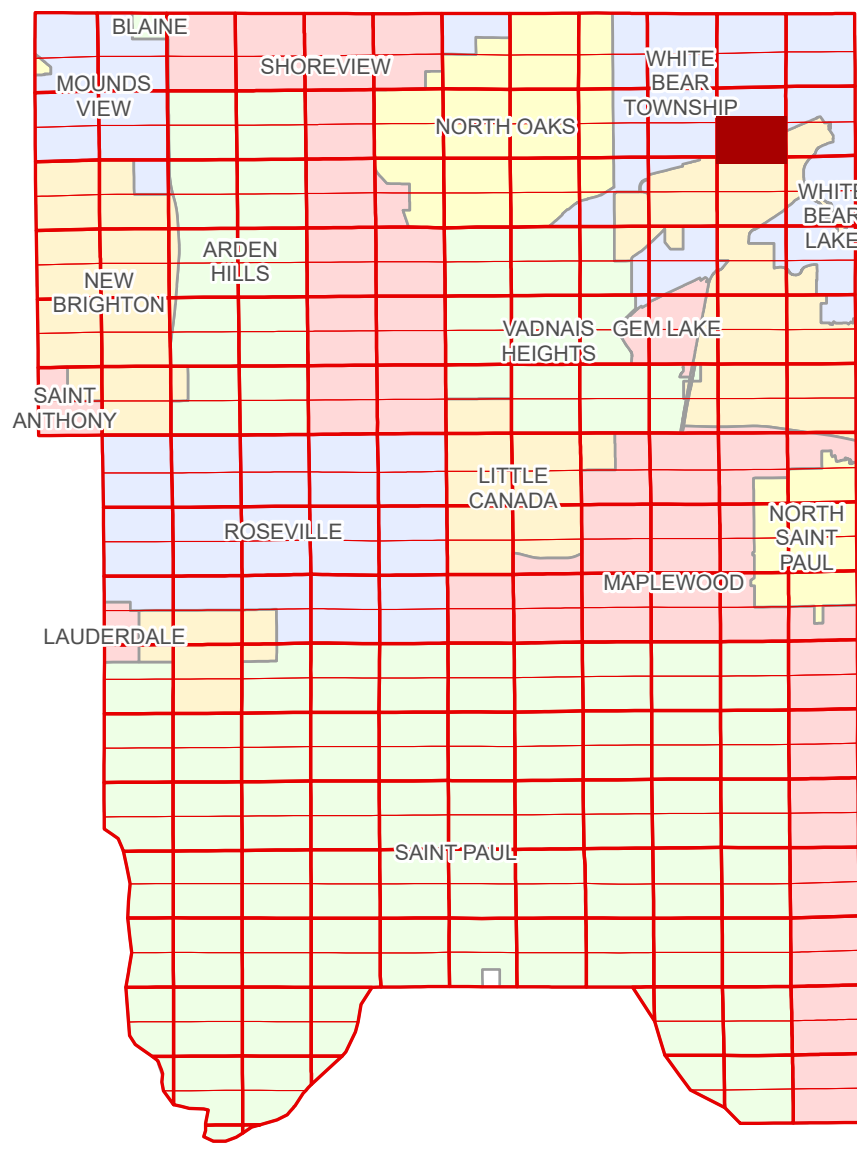


S Half
Section 11
T 30 N
R 22 W

Ramsey County Minnesota Parcel Map

Ramsey County
Section 11



Ramsey County
Section 10

Section 12
Ramsey County

Legend

Section	Metes & Bounds
Quarter	Tax Parcel Type
Quarter Quarter	State Assessed Property
Federal Right of Way	Real Property
State Right of Way	Easement Type
County Right of Way	Ponding
Municipal Right of Way	Private Access
Subdivision Type	Private Driveway
Registered Land Survey	Utility, Storm & Sanitary Sewer
Planned Community	Utility, Unidentified
Condominium	Drainage & Utility
Division Type	Drainage
Lot	
Outlot	
Park	
Tract	

The information on this map is a compilation of Ramsey County Records. THE COUNTY DOES NOT WARRANT OR GUARANTEE THE ACCURACY OF THIS DATA. THE County disclaims any liability for any injuries, time delays, or expenses you may suffer if you rely in any manner on the accuracy of this data.

Produced by Information Services Enterprise GIS Division
RCGSMetaData@Co.Ramsey.MN.US

NOTE: This is not an official Ramsey County tax lot map. This is based on the data available in the Geographic Information System, which may vary from tax data officially recorded in the Tax System. For an official tax map, please contact the Office of Property Records and Revenue.

651-266-2000
AskPropertyTaxandRecords@co.ramsey.mn.us

Section 14
Ramsey County



S113022
1/3/2025