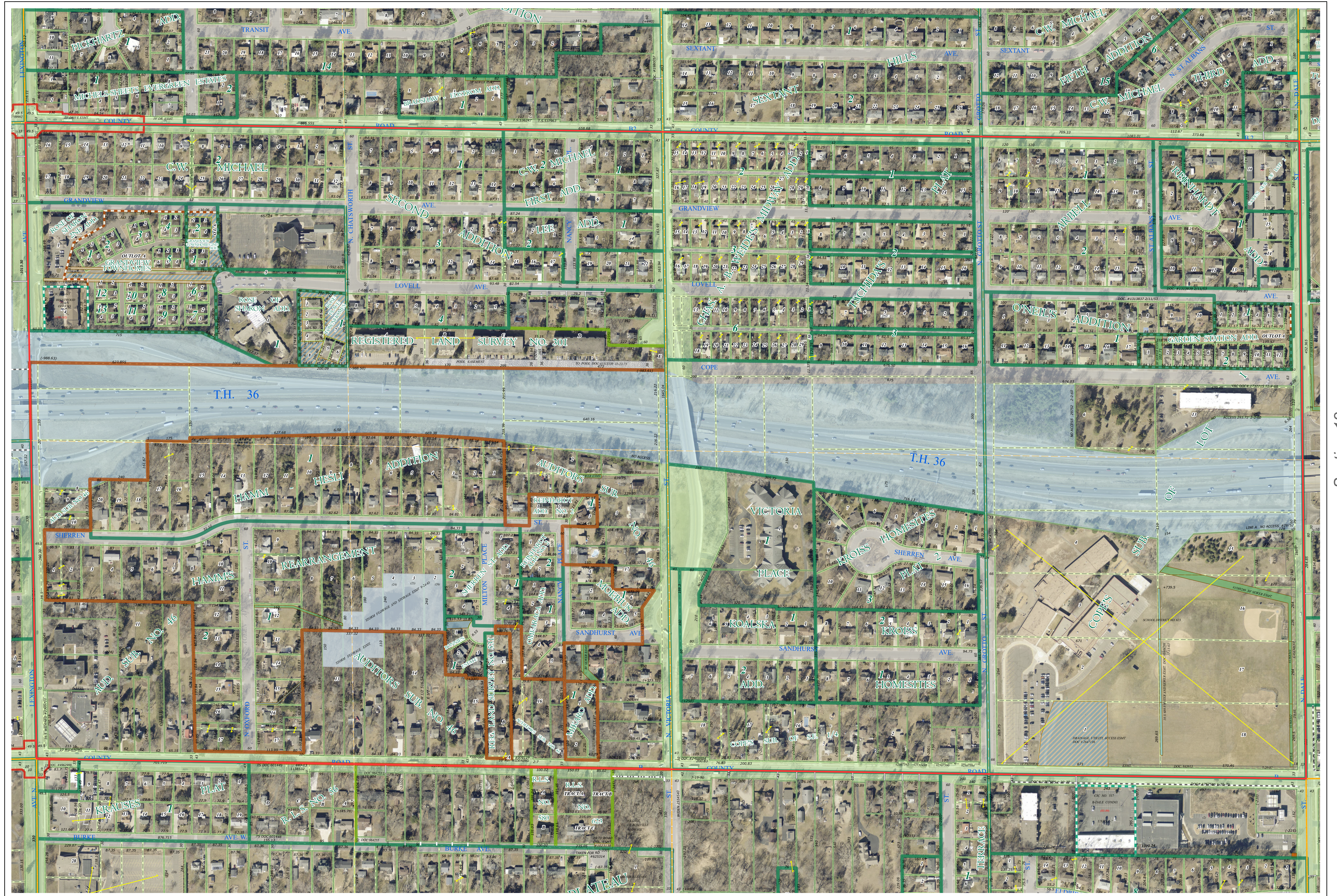
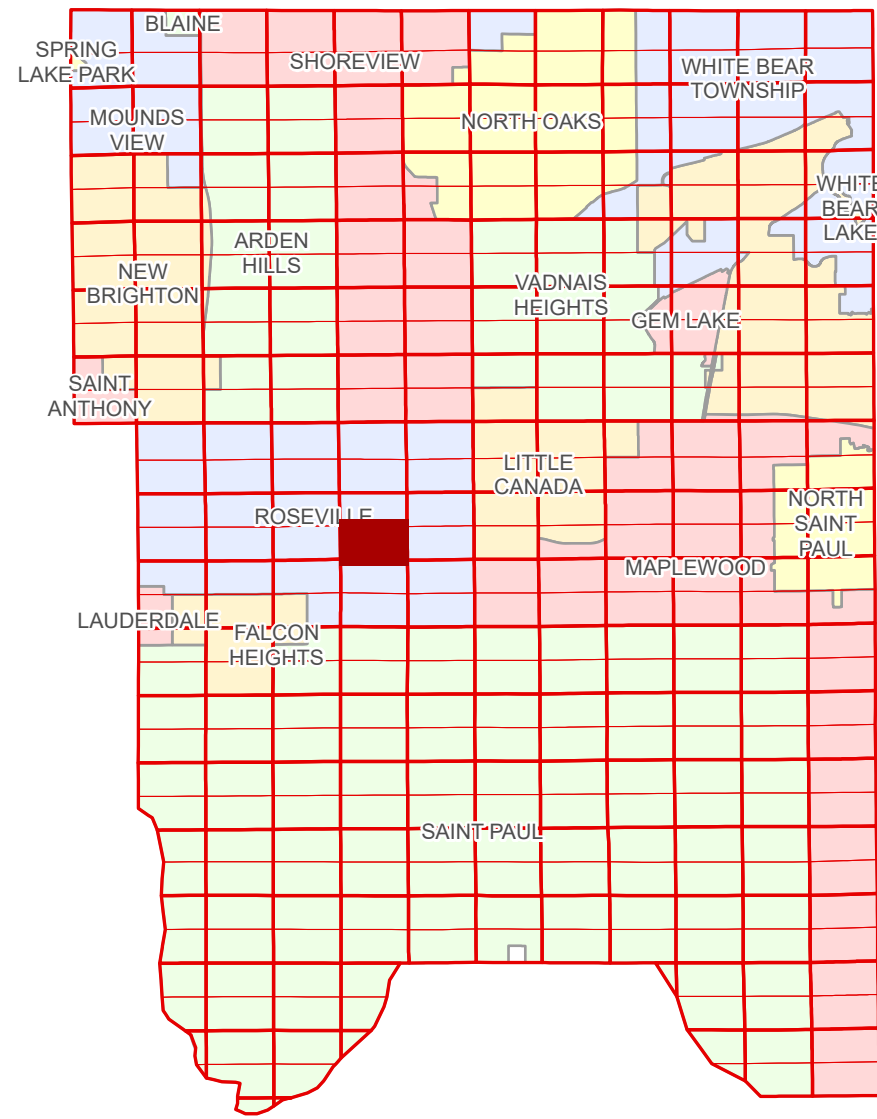


S Half  
Section 11  
T 29 N  
R 23 W

# Ramsey County Minnesota Parcel Map

Ramsey County  
Section 11



Ramsey County  
Section 10

Section 12  
Ramsey County

Legend	
	Section
	Quarter
	Quarter Quarter
	State Right of Way
	County Right of Way
	Municipal Right of Way
	Subdivision Plat
	Registered Land Survey
	Auditors's Subdivision
	Highway RoW Plat
	Planned Community
	Condominium
	Division Type Lot
	Metes & Bounds
	Tax Parcel Type Real Property
	Easement Type Ponding
	Pedestrian
	Utility, Storm & Sanitary Sewer
	Utility, Water
	Utility, Unidentified
	Drainage & Utility
	Drainage
	Misc Easements

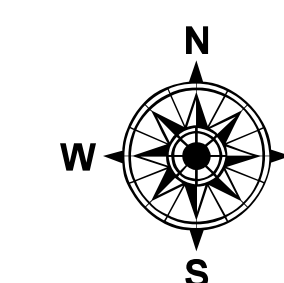
Aerial Imagery Date: March 11 - April 4, 2024



The information on this map is a compilation of Ramsey County Records. THE COUNTY DOES NOT WARRANT OR GUARANTEE THE ACCURACY OF THIS DATA. The County disclaims any liability for any injuries, time delays, or expenses you may suffer if you rely in any manner on the accuracy of this data.  
Produced by Information Services Enterprise GIS Division  
RCGISMetaData@Co.Ramsey.MN.US

NOTE: This is not an official Ramsey County tax lot map. This is based on the data available in the Geographic Information System, which may vary from tax data officially recorded in the Tax System. For an official tax map, please contact the Office of Property Records and Revenue.  
651-266-2000  
AskPropertyTaxandRecords@co.ramsey.mn.us

Section 14  
Ramsey County



0 4590 180 270 360 Feet  
1" = 200'  
1:2,400

S112923

1/3/2025