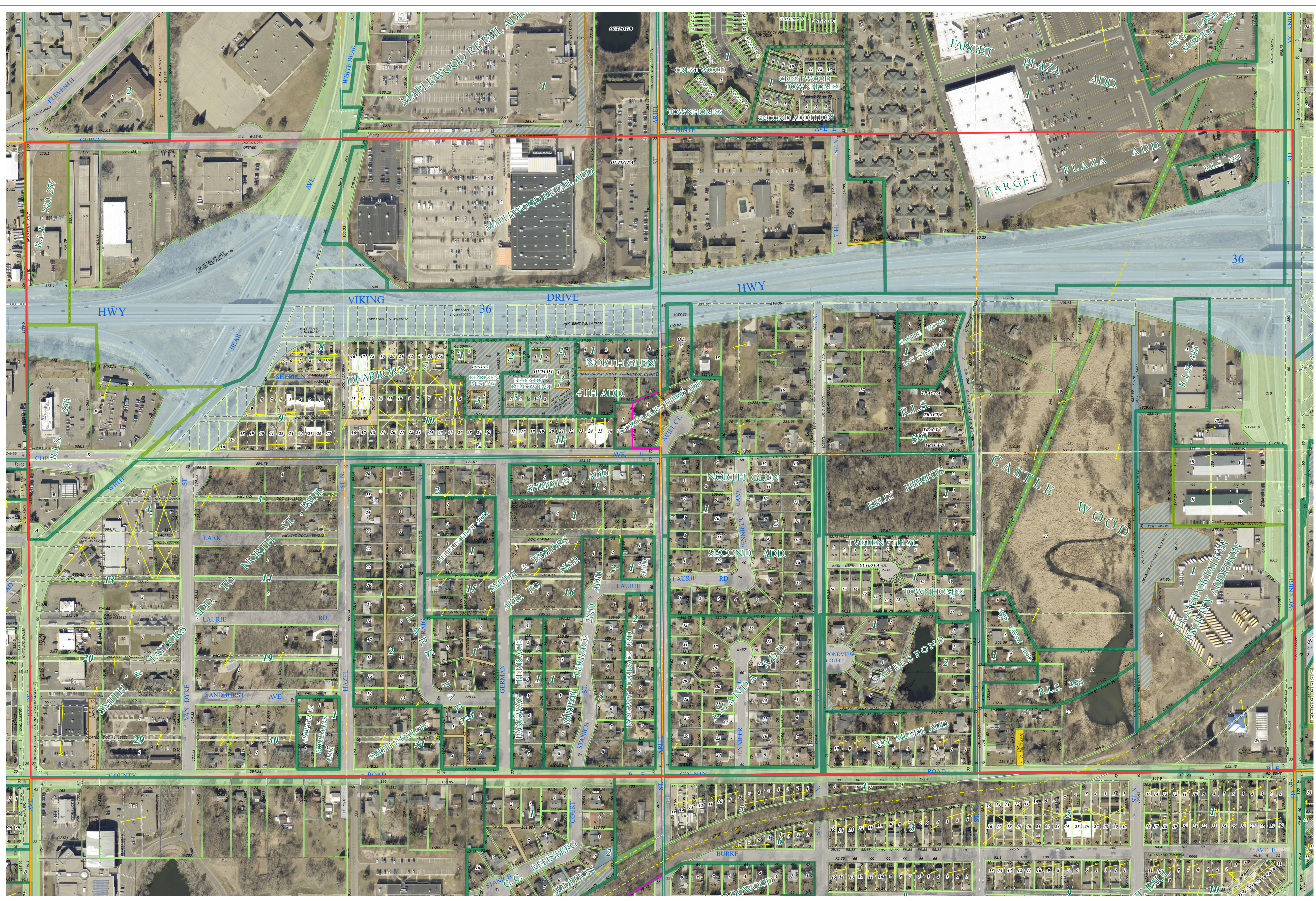
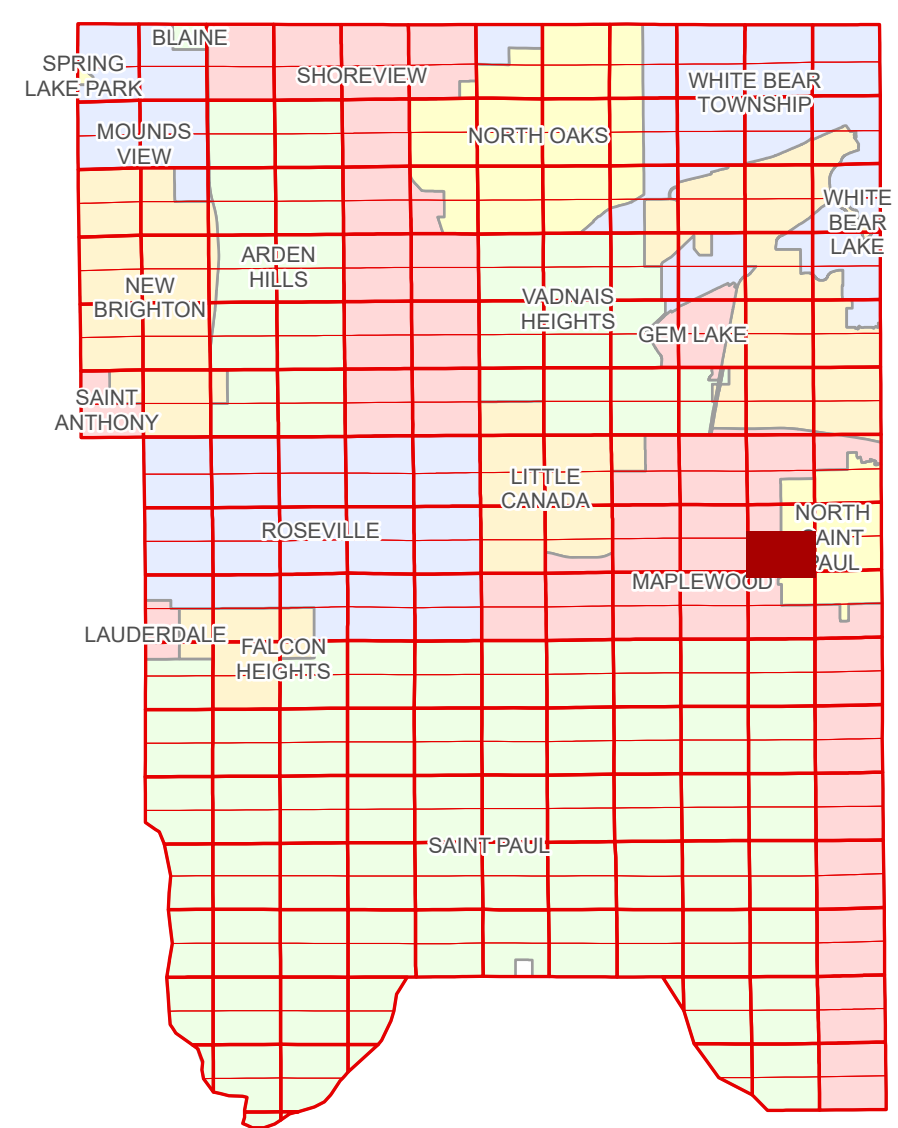


Ramsey County Minnesota Parcel Map

S Half
Section 11
T 29 N
R 22 W

Ramsey County
Section 11



Ramsey County
Section 10

Section 12
Ramsey County

Legend

Section	Metes & Bounds
Quarter	Tax Parcel Type
Quarter Quarter	Real Property
State Right of Way	Easement Type
County Right of Way	Private Access
Municipal Right of Way	Utility, Gas & Oil
Subdivision Type	Utility, Storm & Sanitary Sewer
Subdivision Plat	Utility, Unidentified
Registered Land Survey	Drainage & Utility
Planned Community	Drainage
Division Type	
Lot	

The information on this map is a compilation of Ramsey County Records. THE COUNTY DOES NOT WARRANT OR GUARANTEE THE ACCURACY OF THIS DATA. The County disclaims any liability for any injuries, time delays, or expenses you may suffer if you rely in any manner on the accuracy of this data.

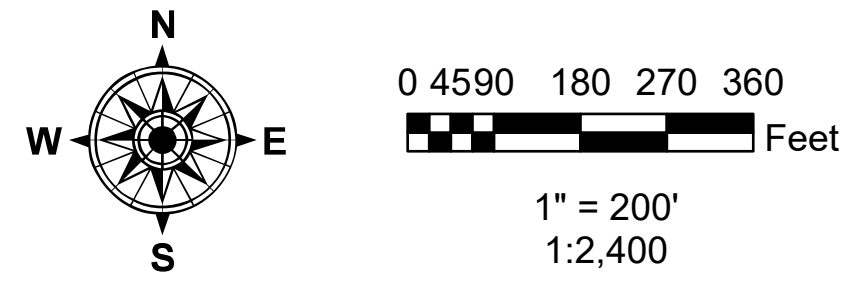
NOTE: This is not an official Ramsey County tax lot map. This is based on the data available in the Geographic Information System, which may vary from tax data officially recorded in the Tax System. For an official tax map, please contact the Office of Property Records and Revenue.

Produced by Information Services Enterprise GIS Division
RCGISMetaData@Co.Ramsey.MN.US

651-266-2000
AskPropertyTaxandRecords@co.ramsey.mn.us

Section 14
Ramsey County

Aerial Imagery Date: March 11 - April 4, 2024



S112922
1/3/2025