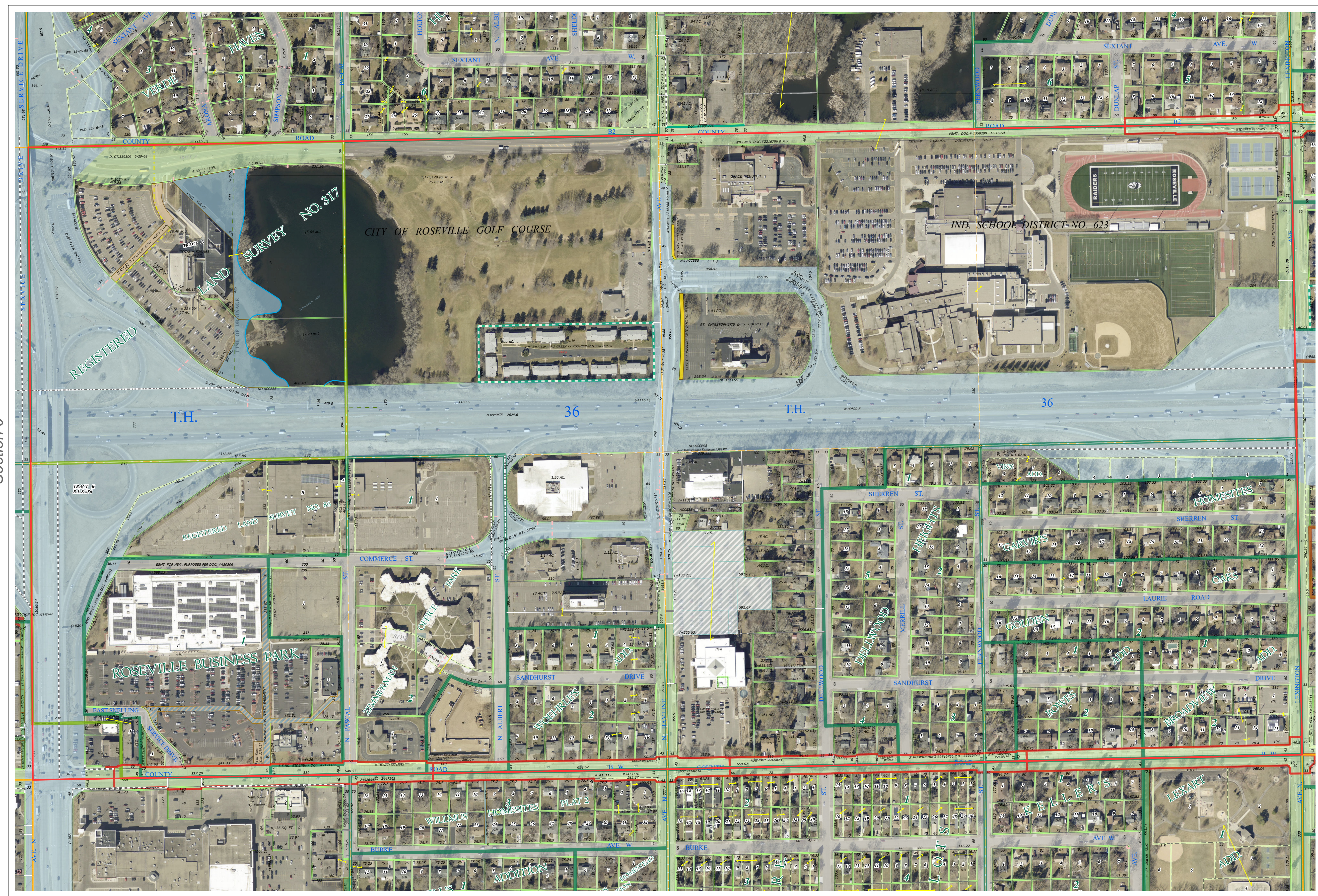
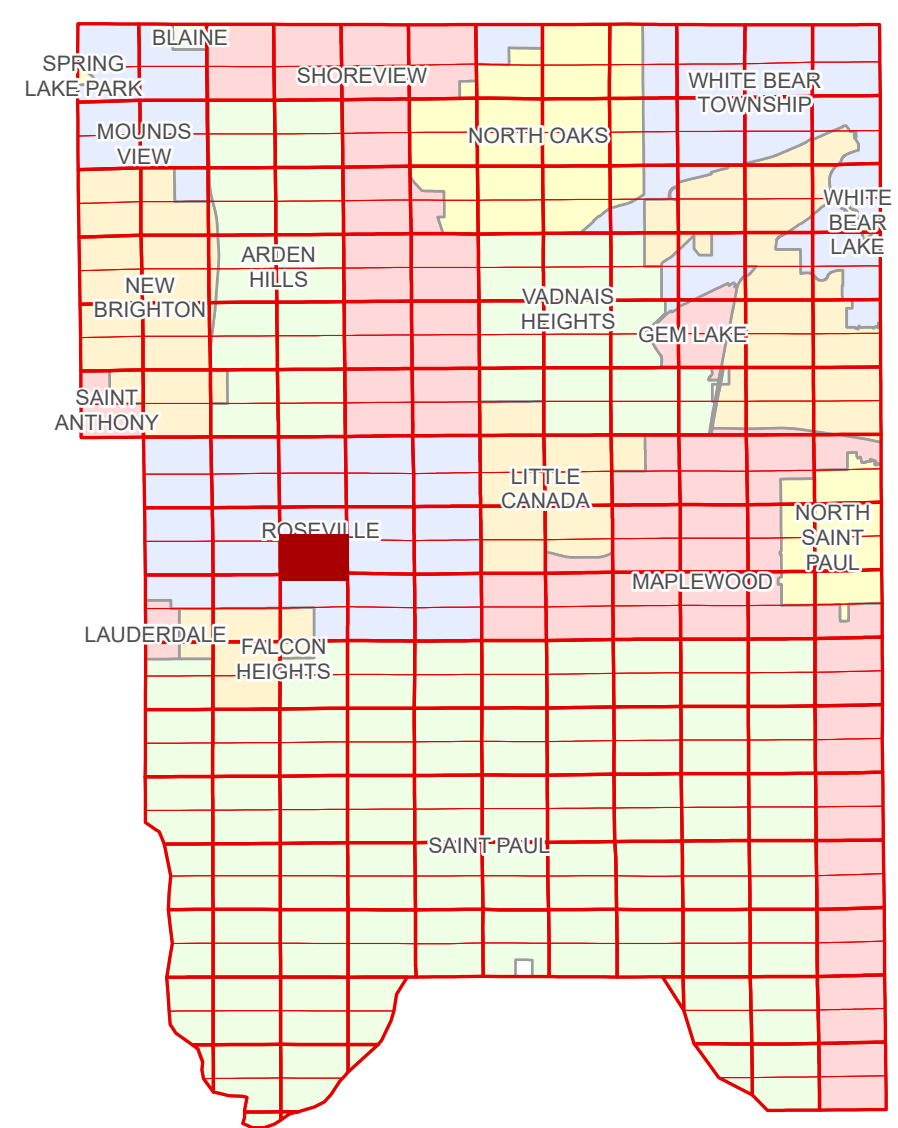


Ramsey County Minnesota Parcel Map

Ramsey County
Section 10

S Half
Section 10
T 29 N
R 23 W



Ramsey County
Section 9

Section 11
Ramsey County

Legend			
	Section		Personal Property
	Quarter		Real Property
	Quarter Quarter		Conservation
	State Right of Way		Parking
	County Right of Way		Pedestrian
	Municipal Right of Way		Private Driveway
	Subdivision Type		Public Right of Way
	Registered Land Survey		Utility, Gas & Oil
	Auditor's Subdivision		Utility, Storm & Sanitary Sewer
	Highway RoW Plat		Utility, Unidentified
	Condominium		Drainage & Utility
	Division Type		Drainage
	Lot		
	Metes & Bounds		

Aerial Imagery Date: March 11 - April 4, 2024



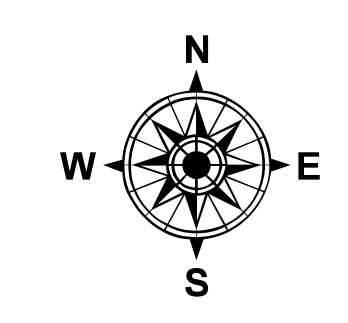
The information on this map is a compilation of Ramsey County Records. THE COUNTY DOES NOT WARRANT OR GUARANTEE THE ACCURACY OF THIS DATA. The County disclaims any liability for any injuries, time delays, or expenses you may suffer if you rely in any manner on the accuracy of this data.

Produced by Information Services Enterprise GIS Division
RCGISMetaData@Co.Ramsey.MN.US

NOTE: This is not an official Ramsey County tax lot map. This is based on the data available in the Geographic Information System, which may vary from tax data officially recorded in the Tax System. For an official tax map, please contact the Office of Property Records and Revenue.

651-266-2000
AskPropertyTaxandRecords@co.ramsey.mn.us

Section 15
Ramsey County



S102923
1/3/2025