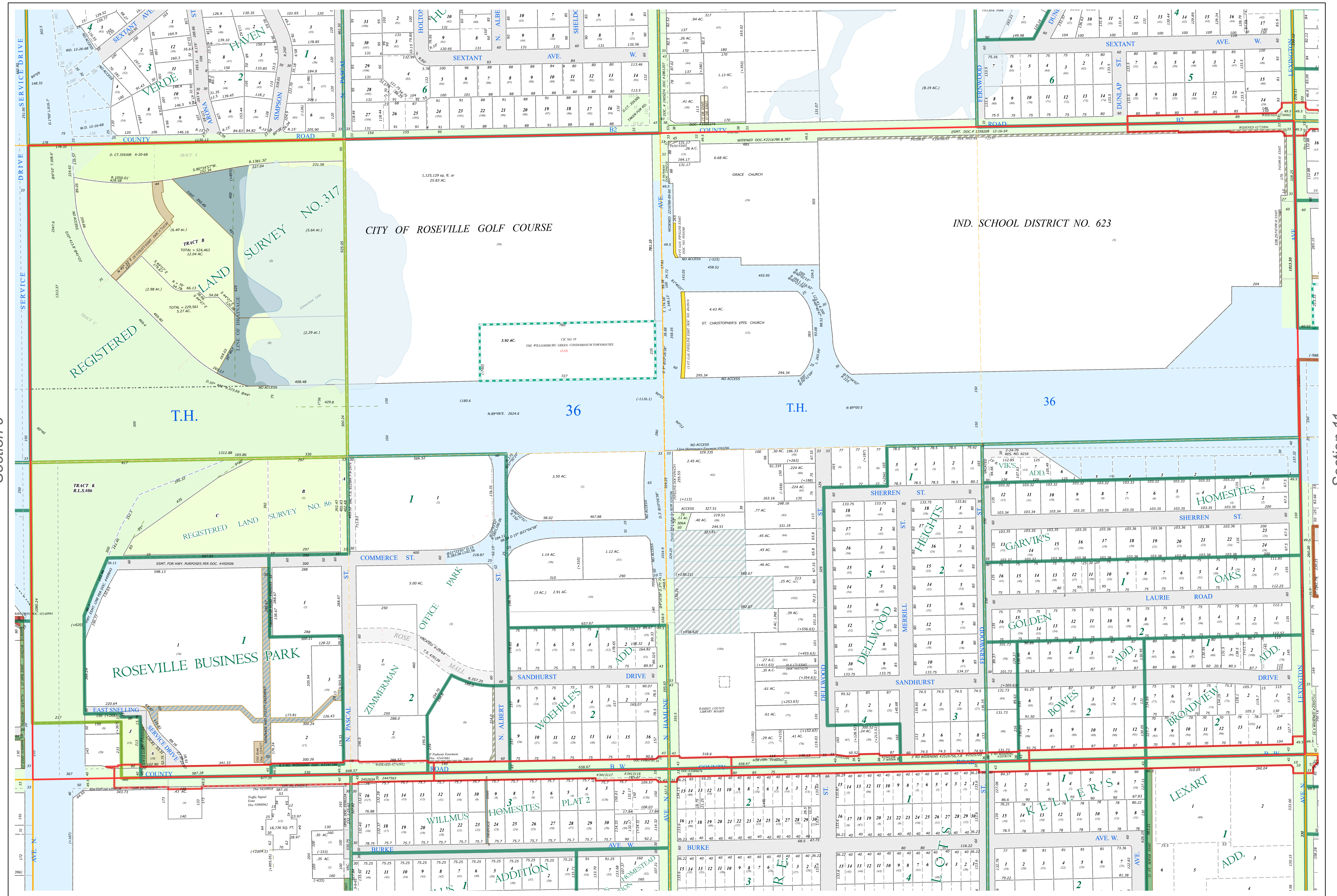
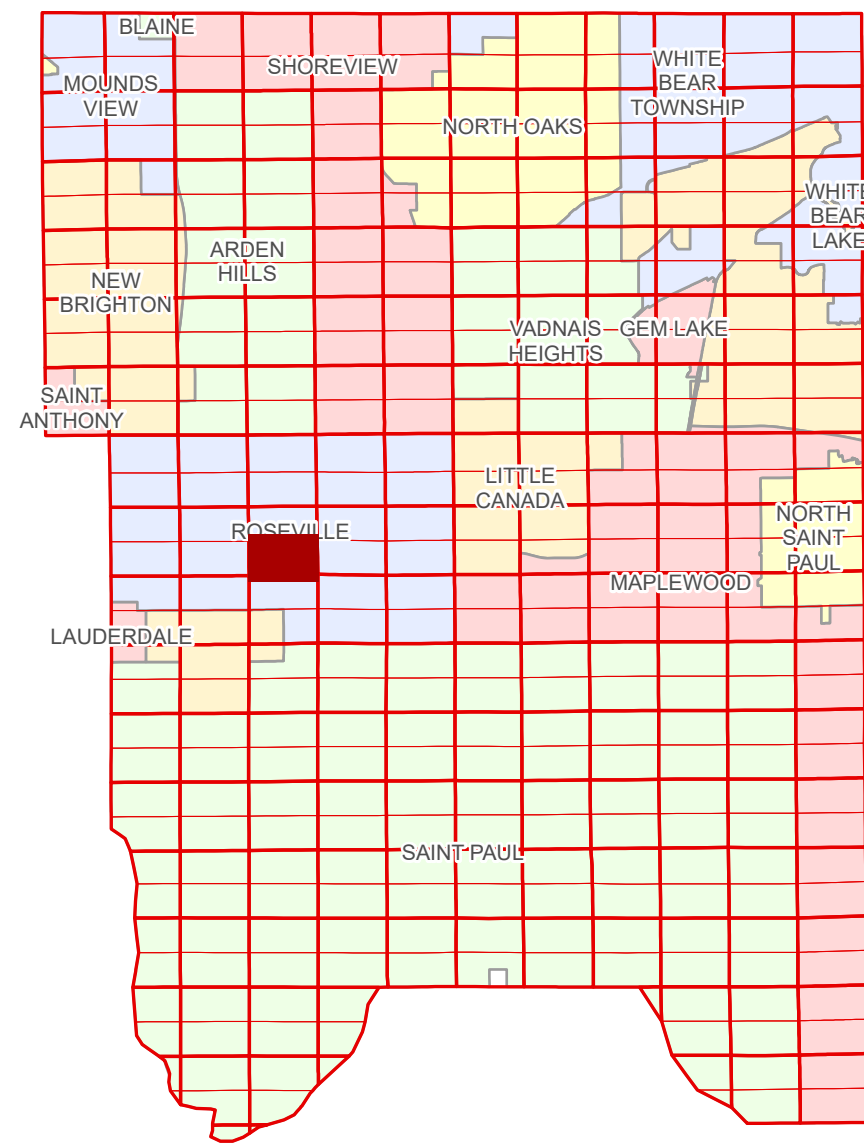


S Half  
Section 10  
T 29 N  
R 23 W

# Ramsey County Minnesota Parcel Map

Ramsey County  
Section 10



Ramsey County  
Section 9

Section 11  
Ramsey County

**Legend**

- Section
- Quarter
- Quarter Quarter
- State Right of Way
- County Right of Way
- Municipal Right of Way
- Subdivision Type
  - Subdivision Plat
  - Registered Land Survey
  - Auditors's Subdivision
  - Highway RoW Plat
  - Condominium
  - Division Type
    - Lot
    - Outlot
    - Tract
- Metes & Bounds
- Tax Parcel Type
  - Personal Property
  - Real Property
- Easement Type
  - Conservation
  - Parking
  - Pedestrian
  - Private Driveway
  - Public Right of Way
  - Utility, Gas & Oil
  - Utility, Storm & Sanitary Sewer
  - Utility, Unidentified
  - Drainage & Utility
  - Drainage

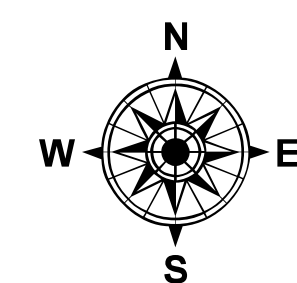
The information on this map is a compilation of Ramsey County Records. THE COUNTY DOES NOT WARRANT OR GUARANTEE THE ACCURACY OF THIS DATA. The County disclaims any liability for any injuries, time delays, or expenses you may suffer if you rely in any manner on the accuracy of this data.

Produced by Information Services Enterprise GIS Division  
RCGISMetaData@Co.Ramsey.MN.US

NOTE: This is not an official Ramsey County tax lot map. This is based on the data available in the Geographic Information System, which may vary from tax data officially recorded in the Tax System. For an official tax map, please contact the Office of Property Records and Revenue.

651-266-2000  
AskPropertyTaxandRecords@co.ramsey.mn.us

Section 15  
Ramsey County



0 4590 180 270 360 Feet  
1" = 200'  
1:2,400

S102923

1/3/2025