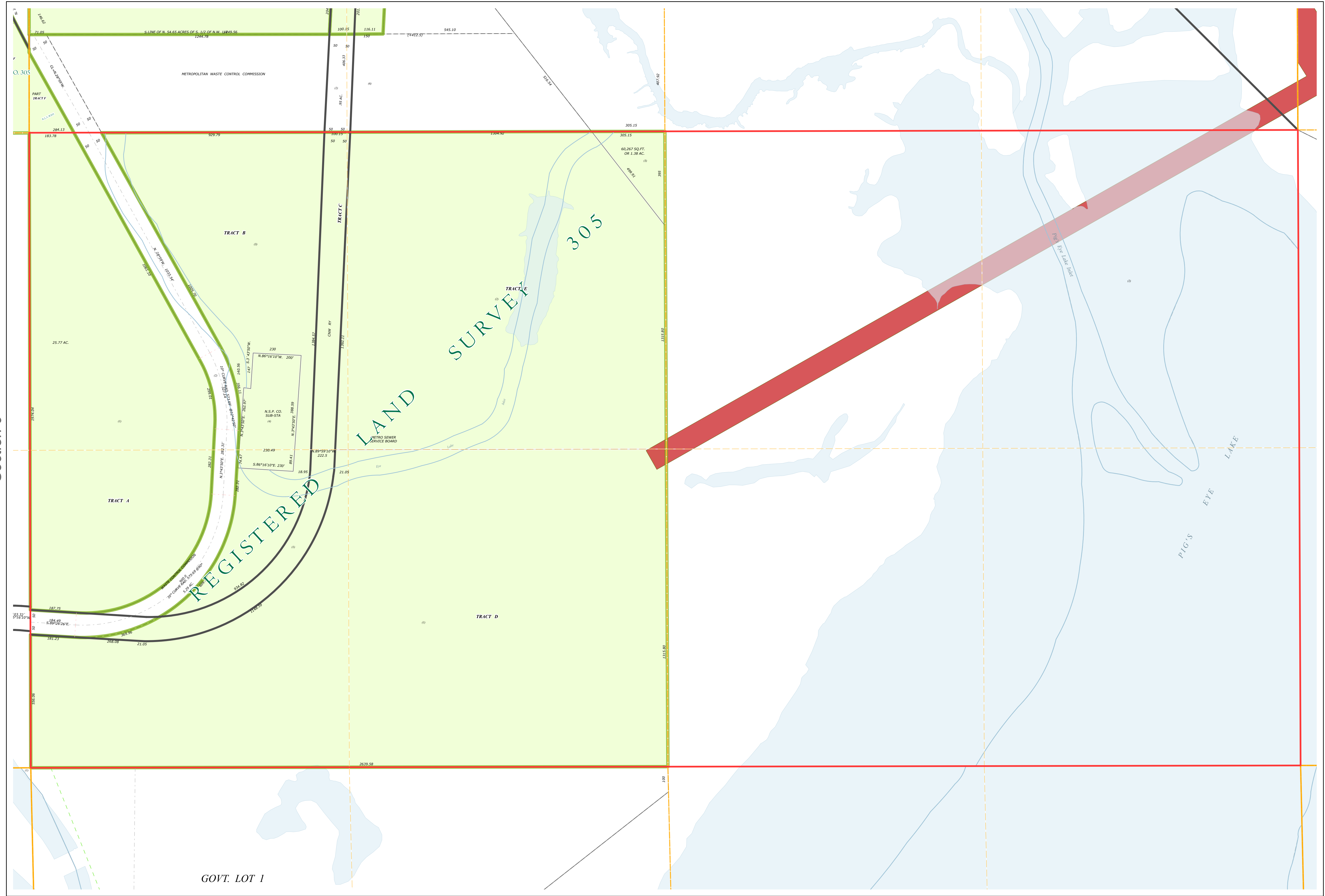
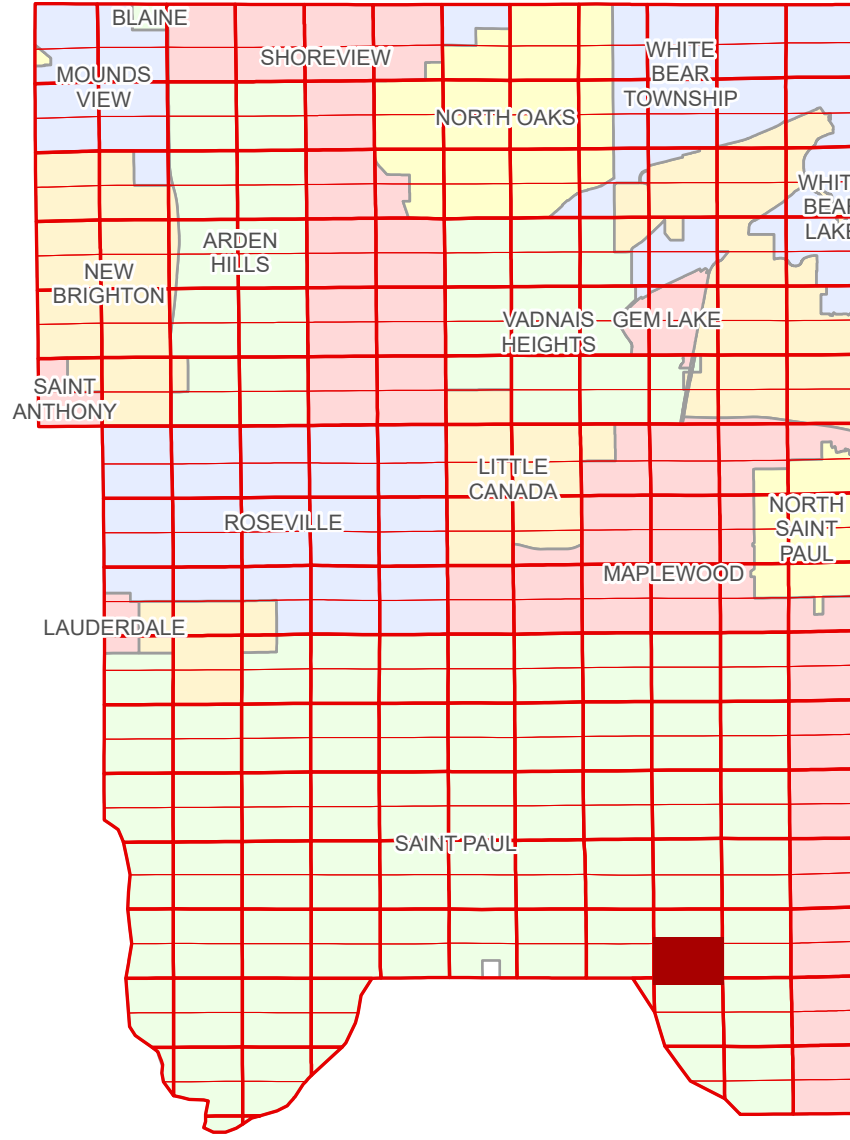


# Ramsey County Minnesota Parcel Map

Ramsey County  
Section 10

S Half  
Section 10  
T 28 N  
R 22 W



**Legend**

Section	Metes & Bounds
Quarter	<b>Tax Parcel Type</b>
Quarter Quarter	State Assessed Property
<b>Subdivision Type</b>	Real Property
Registered Land Survey	<b>Easement Type</b>
<b>Division Type</b>	Utility, Electric
Tract	

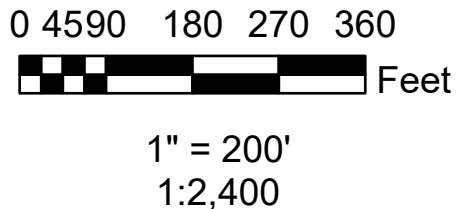
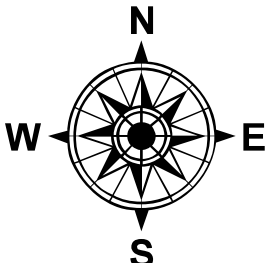
The information on this map is a compilation of Ramsey County Records. THE COUNTY DOES NOT WARRANT OR GUARANTEE THE ACCURACY OF THIS DATA. The County disclaims any liability for any injuries, time delays, or expenses you may suffer if you rely in any manner on the accuracy of this data.

NOTE: This is not an official Ramsey County tax lot map. This is based on the data available in the Geographic Information System, which may vary from tax data officially recorded in the Tax System. For an official tax map, please contact the Office of Property Records and Revenue.

Produced by Information Services Enterprise GIS Division  
RCGISMetaData@Co.Ramsey.MN.US

651-266-2000  
AskPropertyTaxandRecords@co.ramsey.mn.us

Section 15  
Ramsey County



S102822

1/3/2025