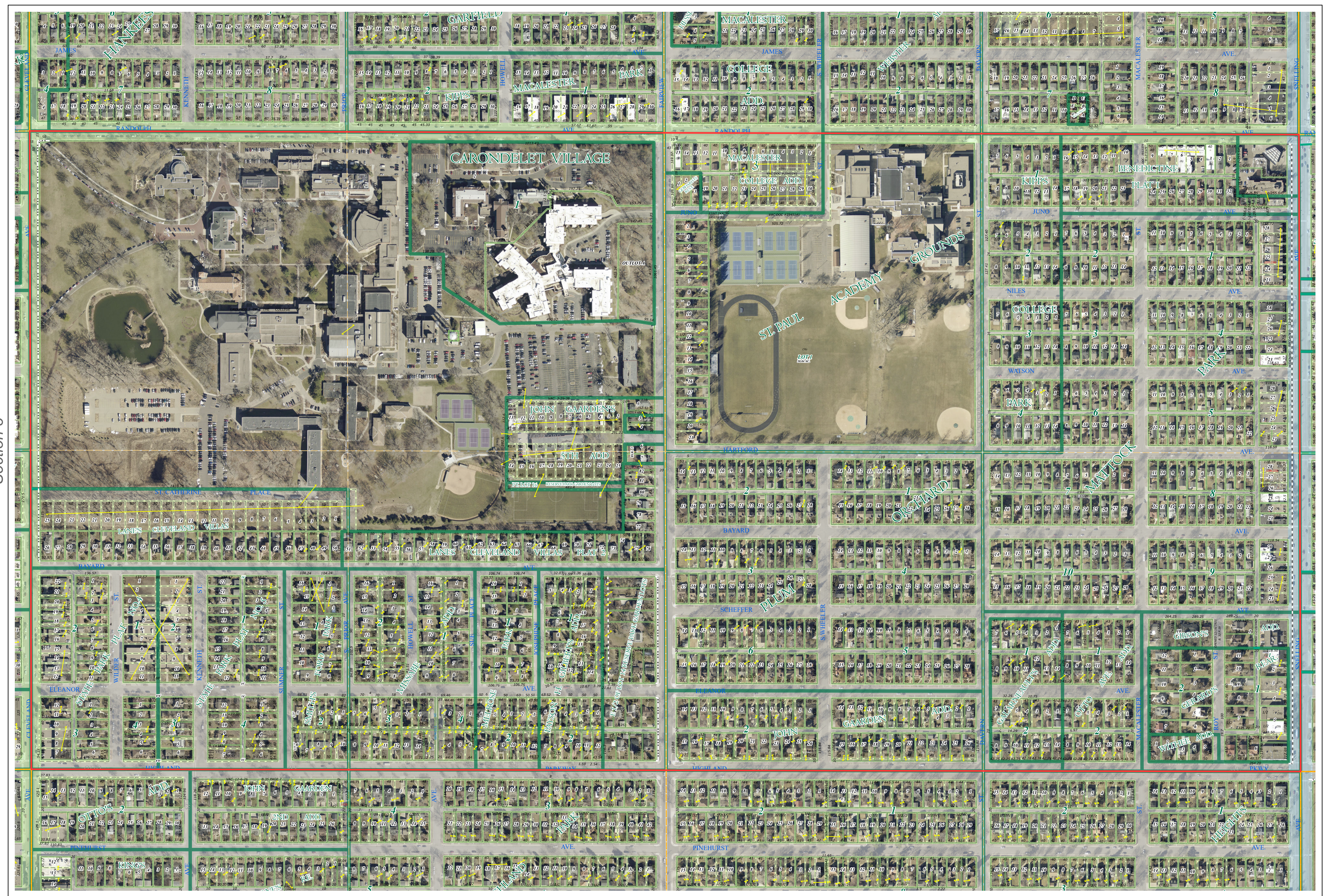
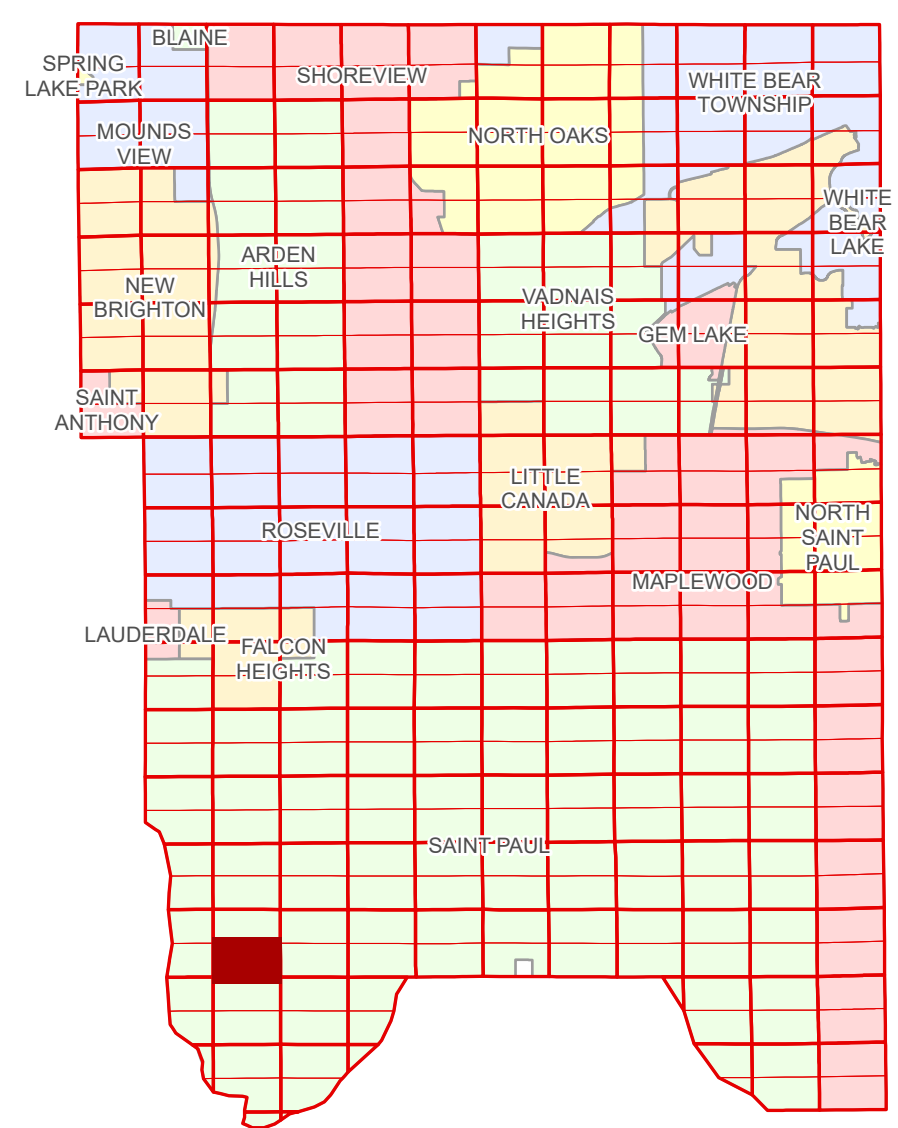


Ramsey County Minnesota Parcel Map

Ramsey County
Section 9

S Half
Section 9
T 28 N
R 23 W



Ramsey County
Section 8

Section 10
Ramsey County

| Legend | | | |
|--------|------------------------|--|-------------------|
| | Section | | Division Type |
| | Quarter | | Lot |
| | Quarter Quarter | | Metes & Bounds |
| | State Right of Way | | Tax Parcel Type |
| | County Right of Way | | Personal Property |
| | Municipal Right of Way | | Real Property |
| | Subdivision Type | | Easement Type |
| | Subdivision Plat | | Private Driveway |
| | | | Misc Easements |

Aerial Imagery Date: March 11 - April 4, 2024



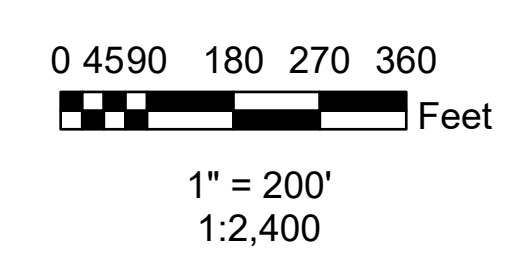
The information on this map is a compilation of Ramsey County Records. THE COUNTY DOES NOT WARRANT OR GUARANTEE THE ACCURACY OF THIS DATA. The County disclaims any liability for any injuries, time delays, or expenses you may suffer if you rely in any manner on the accuracy of this data.

Produced by Information Services Enterprise GIS Division
RCGSMetaData@Co.Ramsey.MN.US

NOTE: This is not an official Ramsey County tax lot map. This is based on the data available in the Geographic Information System, which may vary from tax data officially recorded in the Tax System. For an official tax map, please contact the Office of Property Records and Revenue.

651-266-2000
AskPropertyTaxandRecords@co.ramsey.mn.us

Section 16
Ramsey County



S092823
1/3/2025