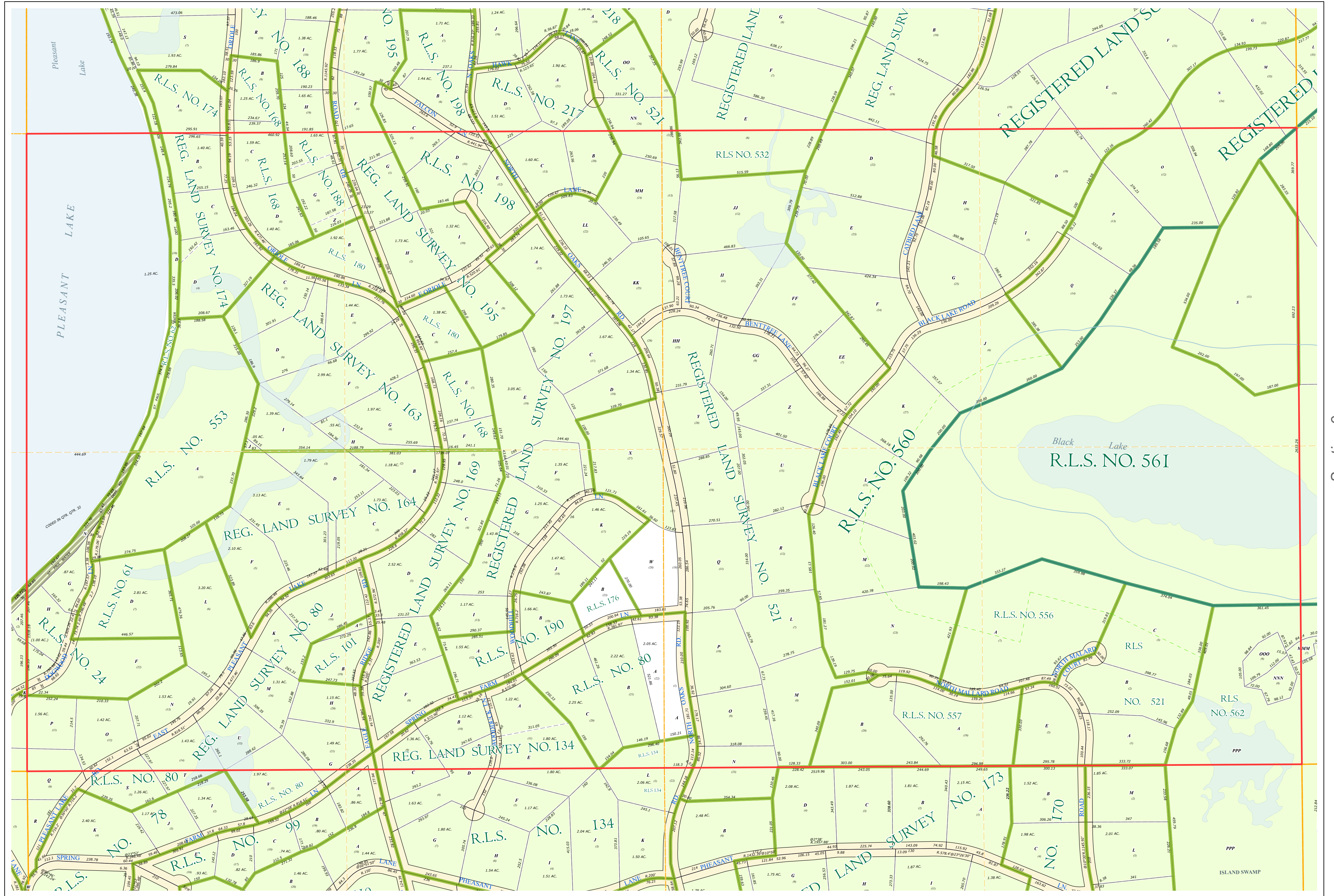
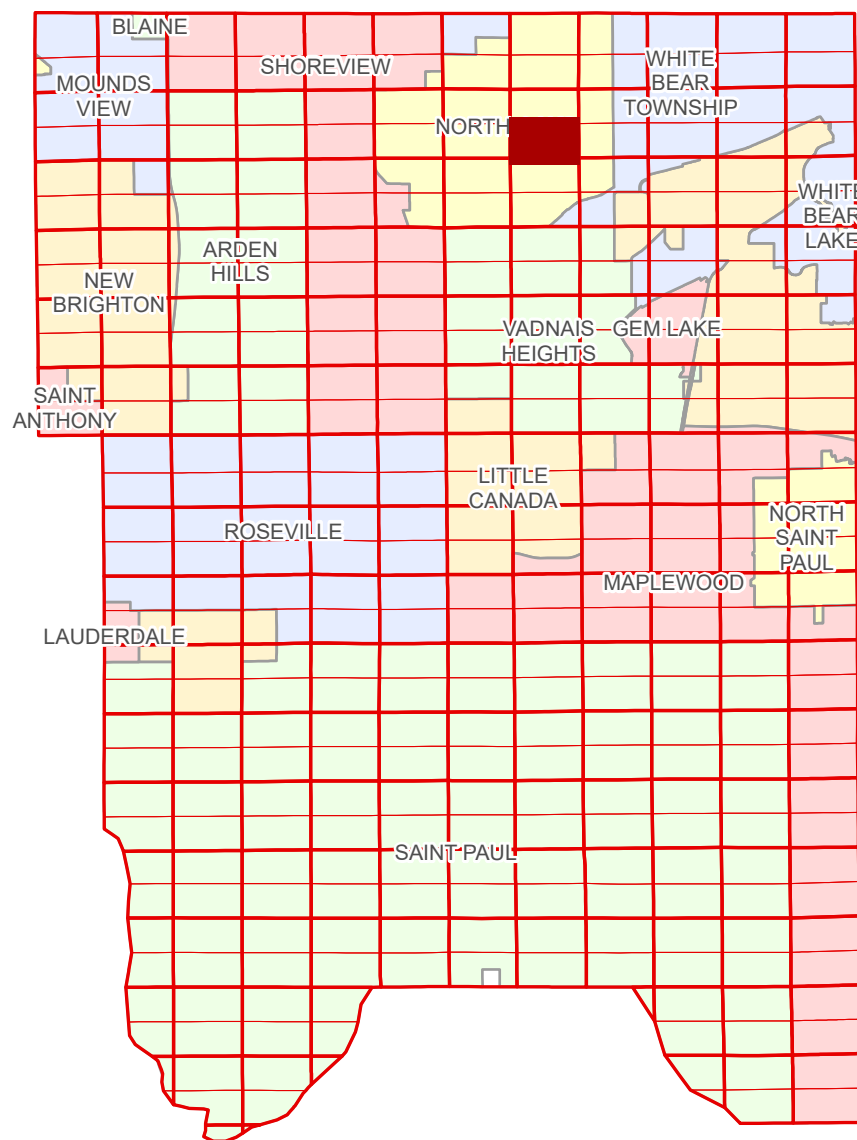


Ramsey County Minnesota Parcel Map

Ramsey County
Section 8

S Half
Section 8
T 30 N
R 22 W



Ramsey County
Section 7

Section 9
Ramsey County

Legend

Section	Metes & Bounds
Quarter	Tax Parcel Type
Quarter Quarter	Real Property
Subdivision Type	Tax Parcel
Subdivision Plat	Easement Type
Registered Land Survey	Pedestrian
Division Type	Private Access
Lot	
Tract	

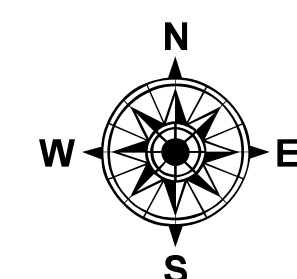
The information on this map is a compilation of Ramsey County Records. THE COUNTY DOES NOT WARRANT OR GUARANTEE THE ACCURACY OF THIS DATA. THE County disclaims any liability for any injuries, time delays, or expenses you may suffer if you rely in any manner on the accuracy of this data.

NOTE: This is not an official Ramsey County tax lot map. This is based on the data available in the Geographic Information System, which may vary from tax data officially recorded in the Tax System. For an official tax map, please contact the Office of Property Records and Revenue.

Produced by Information Services Enterprise GIS Division
RCGSMetaData@Co.Ramsey.MN.US

651-266-2000
AskPropertyTaxandRecords@co.ramsey.mn.us

Section 17
Ramsey County



0 450 900 1800 3600 Feet
1" = 200'
1:2,400

S083022

1/3/2025