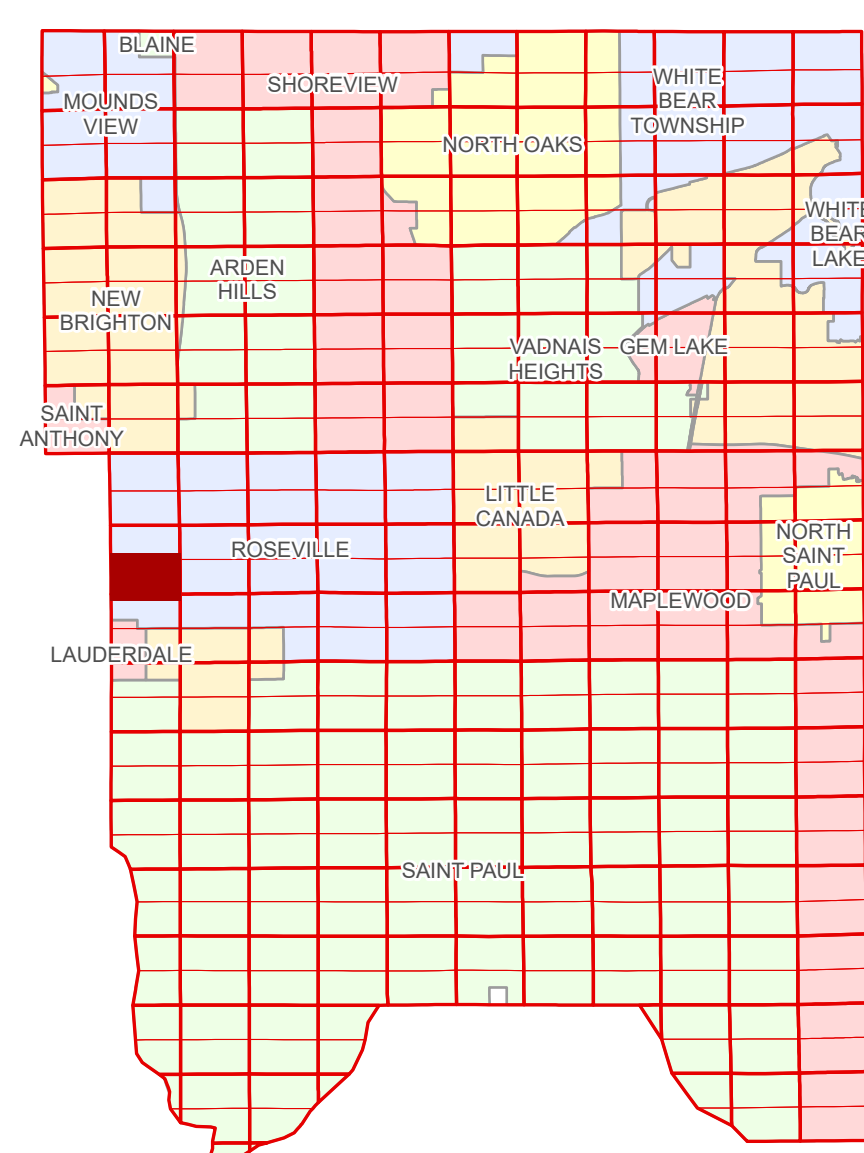


Ramsey County Minnesota Parcel Map

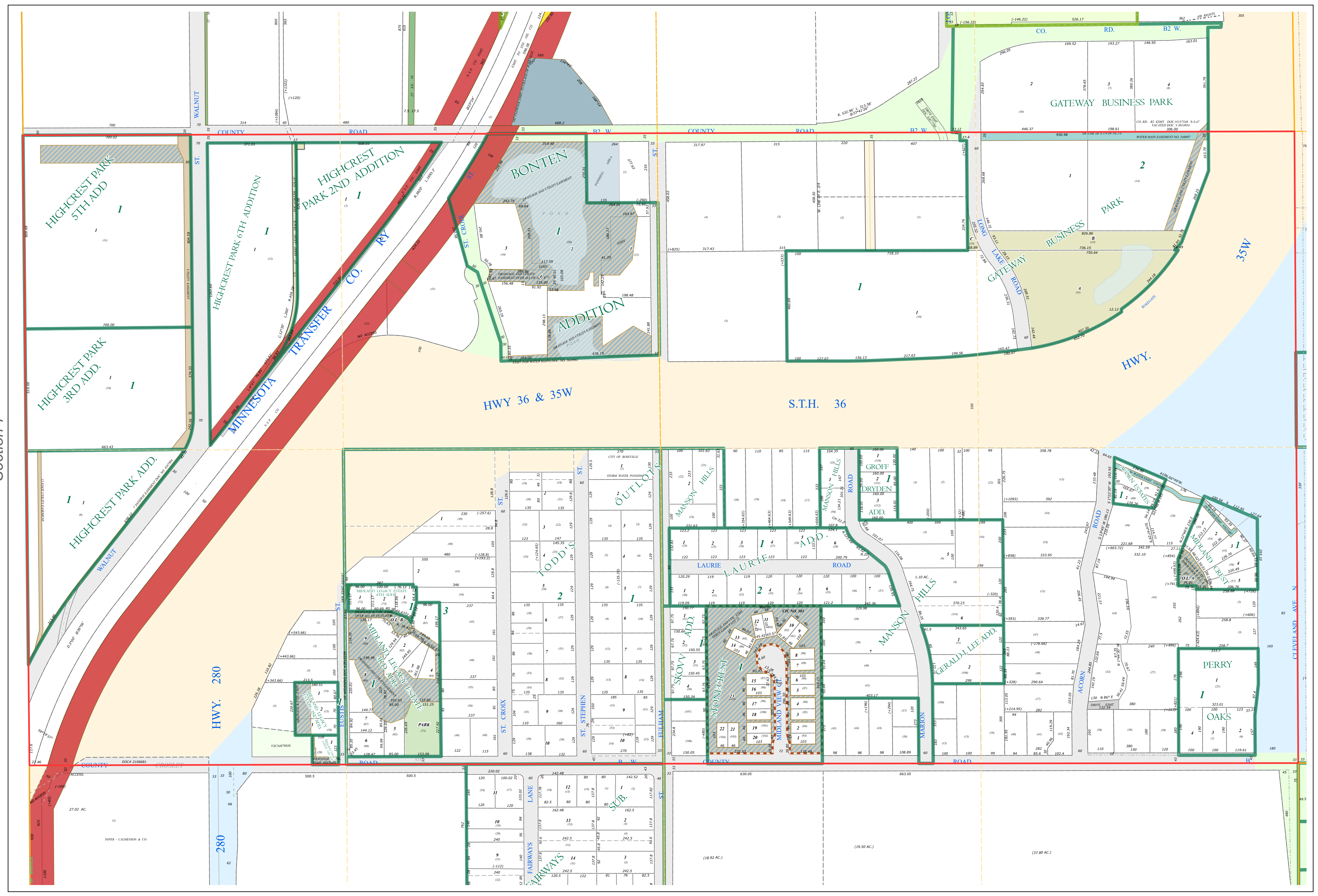
Ramsey County
Section 8

S Half
Section 8
T 29 N
R 23 W



Legend

Section	Tax Parcel Type
Quarter	State Assessed Property
Quarter Quarter	Real Property
Federal Right of Way	Easement Type
State Right of Way	Ponding
County Right of Way	Private Access
Municipal Right of Way	Private Driveway
Subdivision Type	Railroad
Subdivision Plat	Utility, Electric
Planned Community	Utility, Storm & Sanitary Sewer
Division Type	Utility, Water
Lot	Utility, Unidentified
Outlot	Drainage & Utility
Park	Misc Easements
Metes & Bounds	



Hennepin County
Section 7

Section 9
Ramsey County

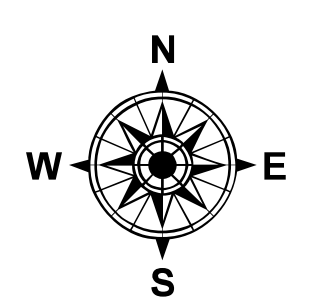
The information on this map is a compilation of Ramsey County Records. THE COUNTY DOES NOT WARRANT OR GUARANTEE THE ACCURACY OF THIS DATA. The County disclaims any liability for any injuries, time delays, or expenses you may suffer if you rely in any manner on the accuracy of this data.

Produced by Information Services Enterprise GIS Division
RCGISMetaData@Co.Ramsey.MN.US

NOTE: This is not an official Ramsey County tax lot map. This is based on the data available in the Geographic Information System, which may vary from tax data officially recorded in the Tax System. For an official tax map, please contact the Office of Property Records and Revenue.

651-266-2000
AskPropertyTaxandRecords@co.ramsey.mn.us

Section 17
Ramsey County



0 450 900 1800 2700 3600 Feet
1" = 200'
1:2,400

S082923
1/3/2025