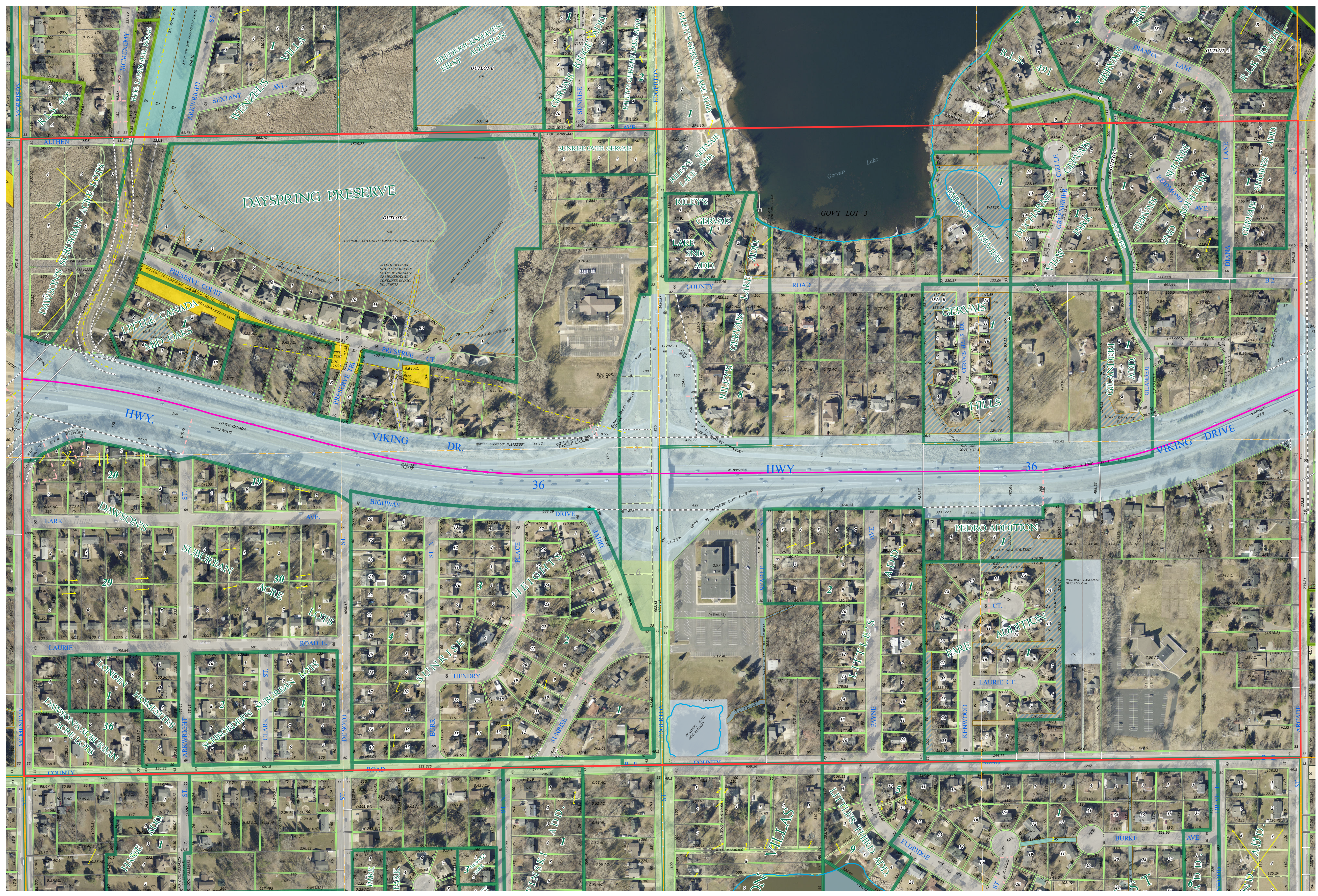
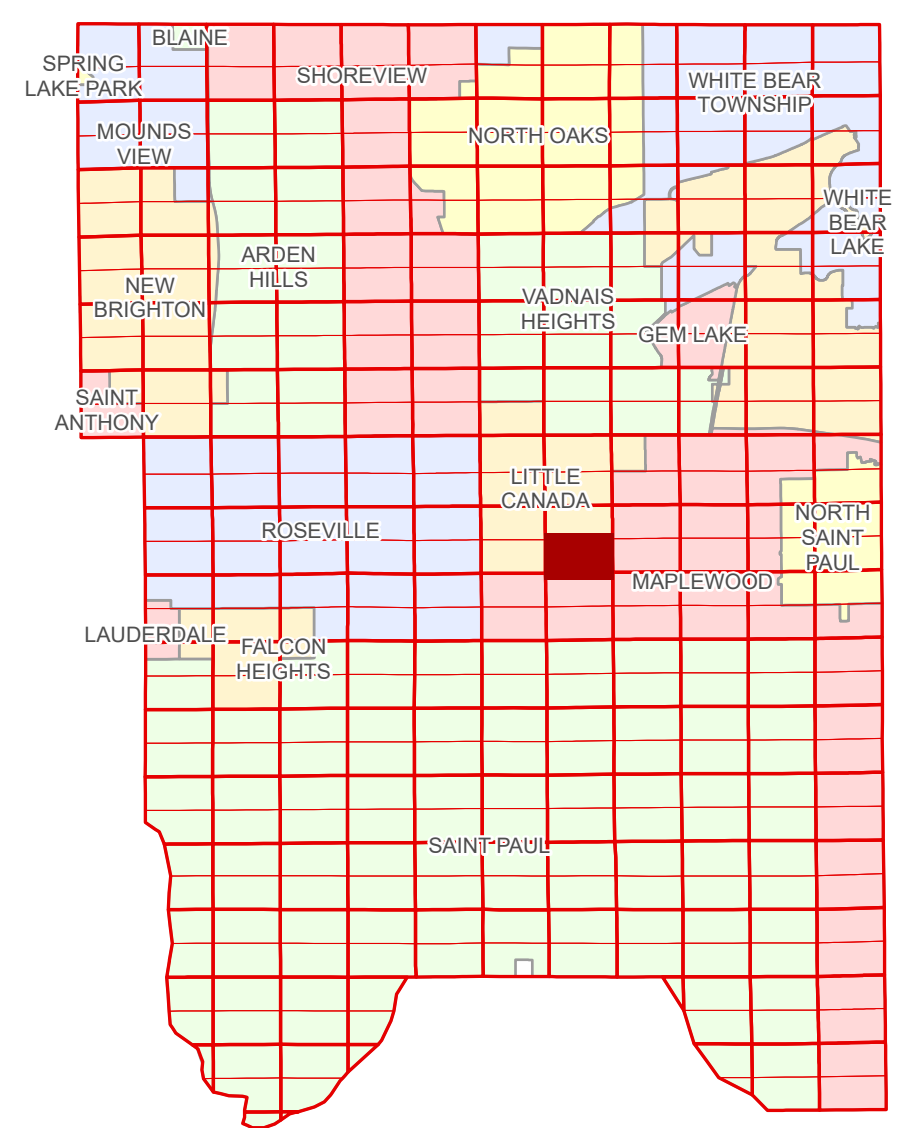


Ramsey County Minnesota Parcel Map

Ramsey County
Section 8

S Half
Section 8
T 29 N
R 22 W



Legend

Section	Tax Parcel Type
Quarter	Easement Type
Quarter Quarter	Ponding
State Right of Way	Private Driveway
County Right of Way	Utility, Gas & Oil
Municipal Right of Way	Utility, Storm & Sanitary Sewer
Subdivision Type	Utility, Unidentified
Subdivision Plat	Drainage & Utility
Registered Land Survey	Drainage
Division Type	Misc Easements
Lot	
Metes & Bounds	

The information on this map is a compilation of Ramsey County Records. THE COUNTY DOES NOT WARRANT OR GUARANTEE THE ACCURACY OF THIS DATA. The County disclaims any liability for any injuries, time delays, or expenses you may suffer if you rely in any manner on the accuracy of this data.

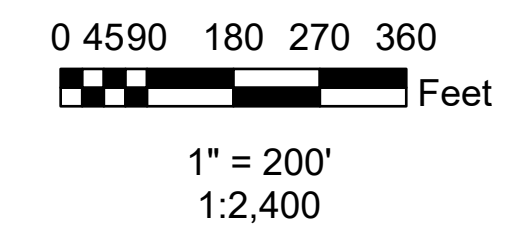
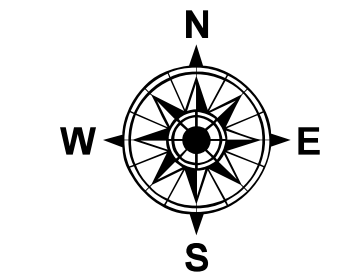
NOTE: This is not an official Ramsey County tax lot map. This is based on the data available in the Geographic Information System, which may vary from tax data officially recorded in the Tax System. For an official tax map, please contact the Office of Property Records and Revenue.

Produced by Information Services Enterprise GIS Division
RCGISMetaData@Co.Ramsey.MN.US

651-266-2000
AskPropertyTaxandRecords@co.ramsey.mn.us

Section 17
Ramsey County

Aerial Imagery Date: March 11 - April 4, 2024



S082922
1/3/2025