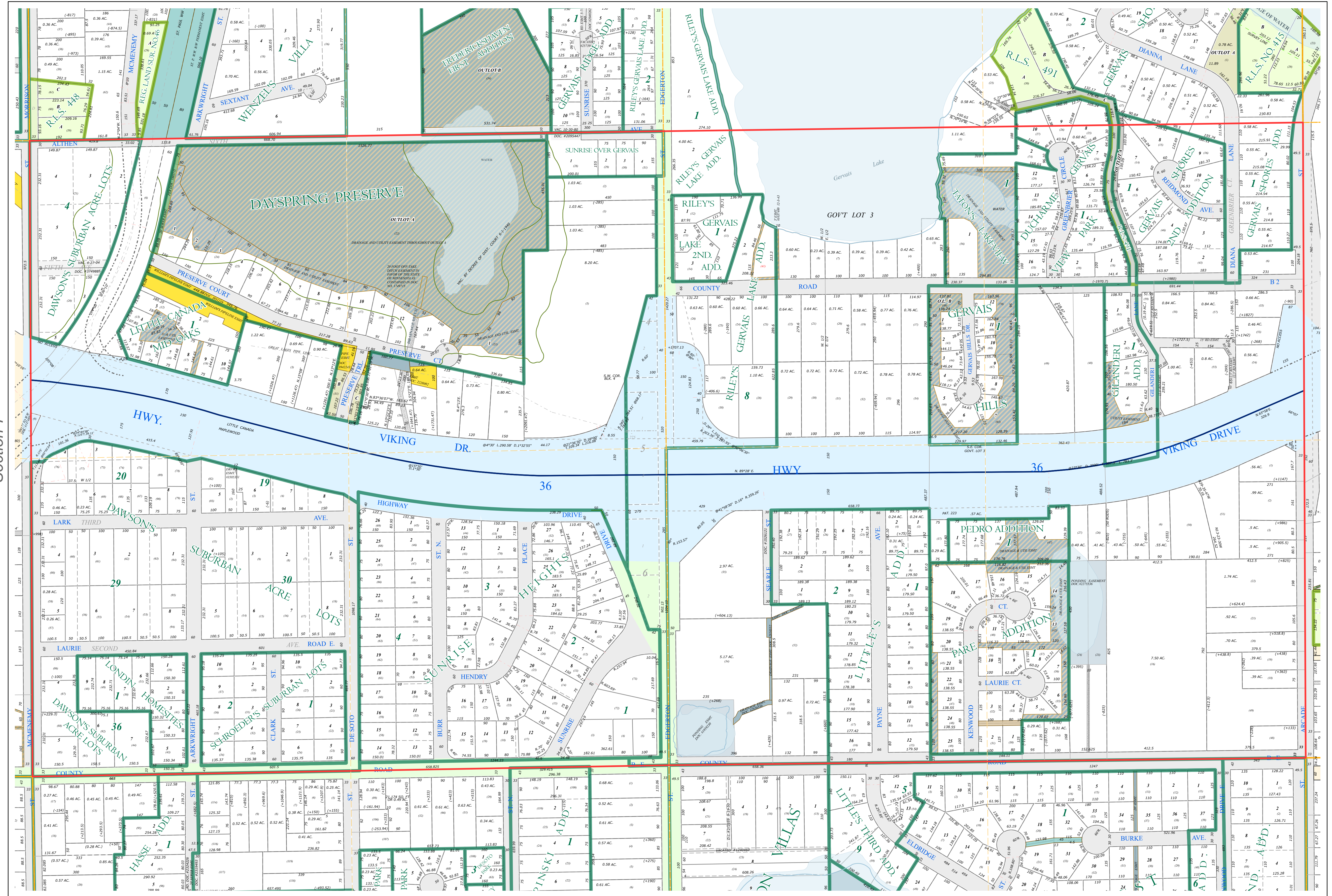
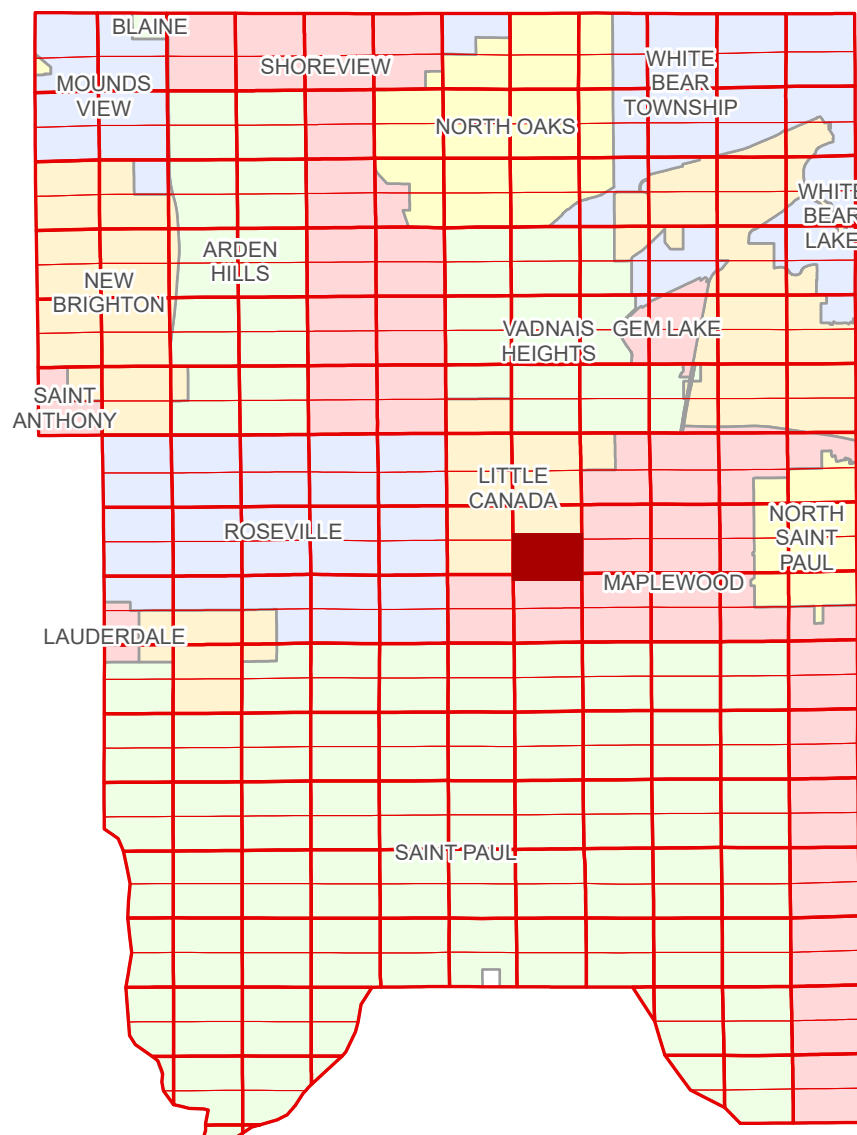


S Half  
Section 8  
T 29 N  
R 22 W

# Ramsey County Minnesota Parcel Map

Ramsey County  
Section 8



Ramsey County  
Section 7

Section 9  
Ramsey County

**Legend**

Section	Metes & Bounds
Quarter	Tax Parcel Type
Quarter Quarter	Real Property
State Right of Way	Easement Type
County Right of Way	Ponding
Municipal Right of Way	Private Driveway
Subdivision Type	Utility, Gas & Oil
Registered Land Survey	Utility, Storm & Sanitary Sewer
Division Type	Utility, Unidentified
Lot	Drainage & Utility
Outlot	Drainage
Tract	Misc Easements

The information on this map is a compilation of Ramsey County Records. THE COUNTY DOES NOT WARRANT OR GUARANTEE THE ACCURACY OF THIS DATA. The County disclaims any liability for any injuries, time delays, or expenses you may suffer if you rely in any manner on the accuracy of this data.

Produced by Information Services Enterprise GIS Division  
RCGSMetaData@Co.Ramsey.MN.US

NOTE: This is not an official Ramsey County tax lot map. This is based on the data available in the Geographic Information System, which may vary from tax data officially recorded in the Tax System. For an official tax map, please contact the Office of Property Records and Revenue.

651-266-2000  
AskPropertyTaxandRecords@co.ramsey.mn.us

Section 17  
Ramsey County



0 4590 180 270 360 Feet

1" = 200'  
1:2,400

S082922  
1/3/2025