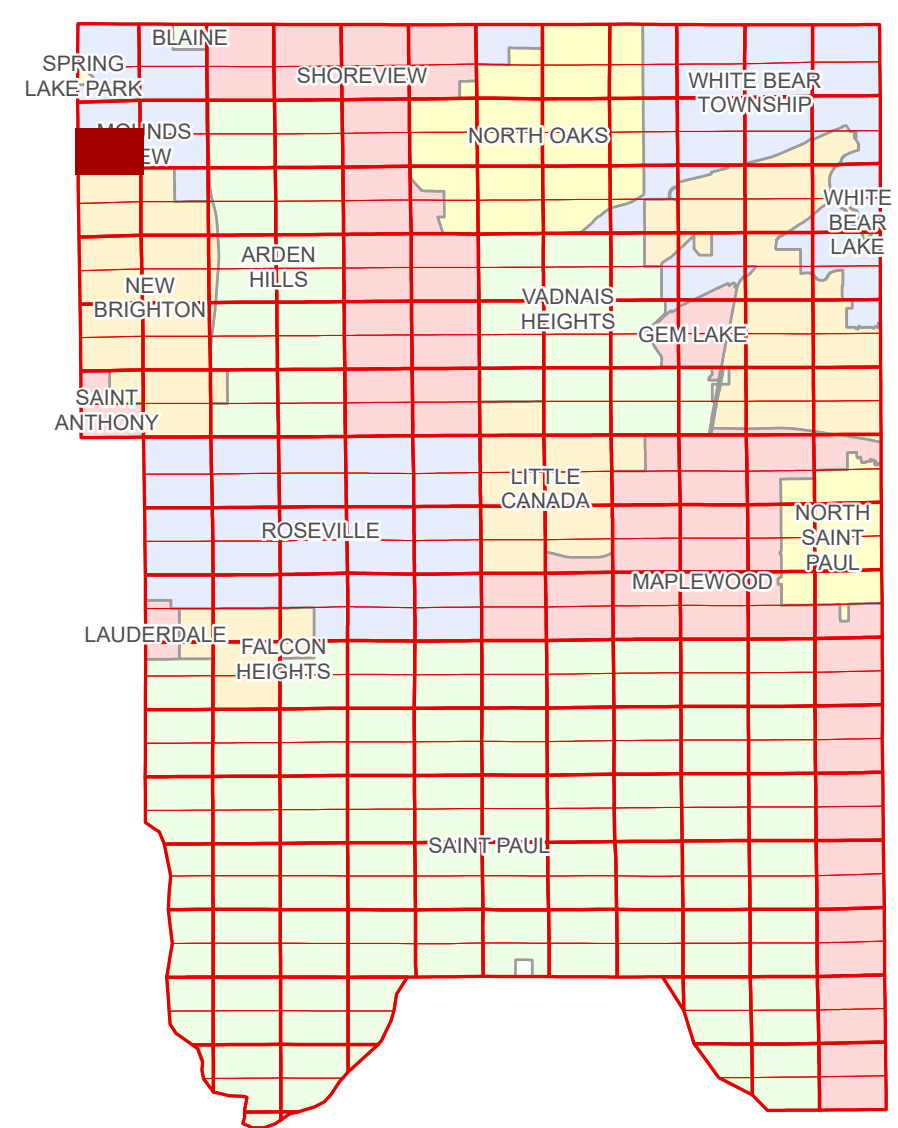


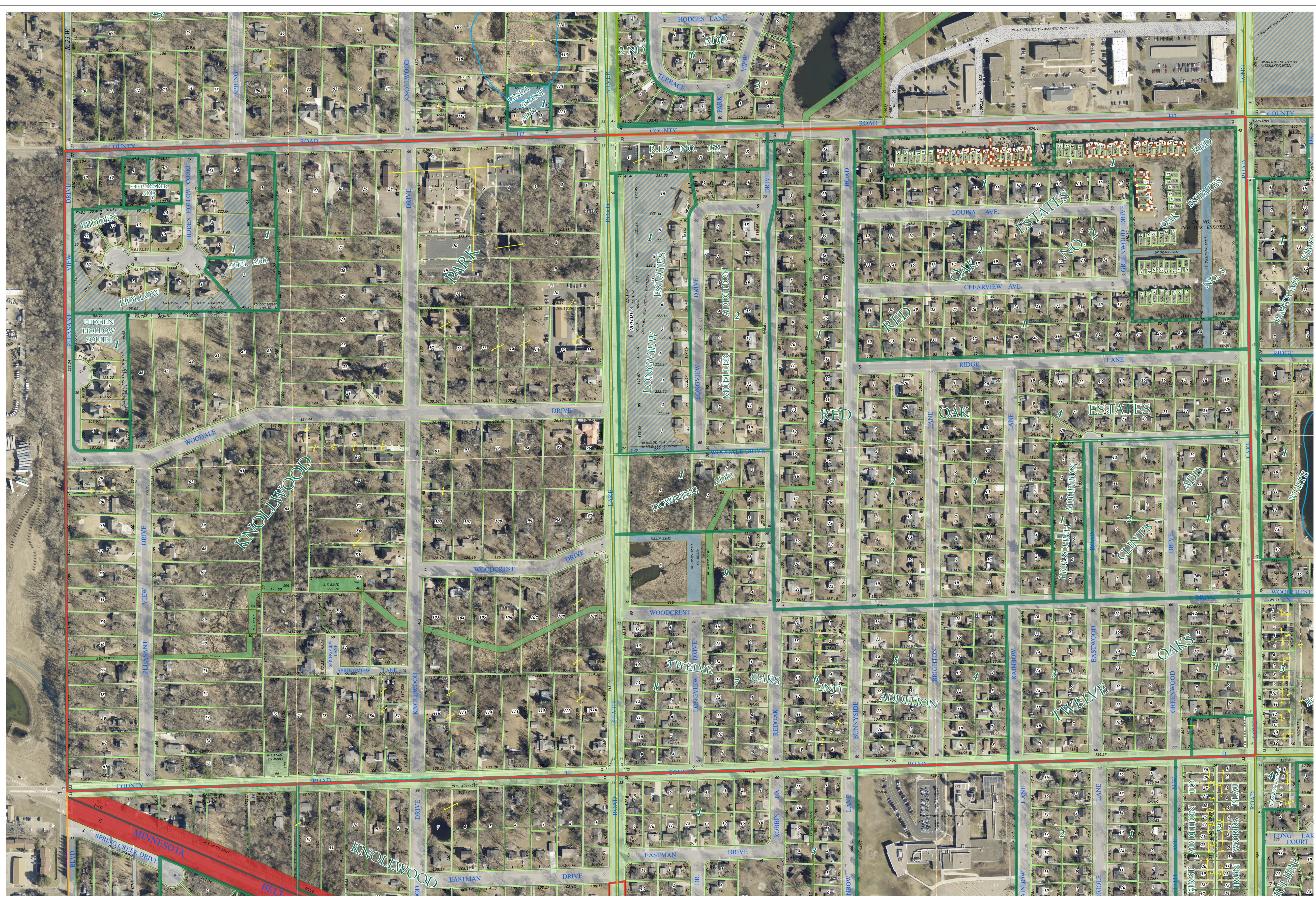
Ramsey County Minnesota Parcel Map

Ramsey County
Section 7

S Half
Section 7
T 30 N
R 23 W



Anoka County
Section 12



Section 8
Ramsey County

Legend	
	Section
	Quarter
	Quarter Quarter
	County Right of Way
	Municipal Right of Way
	Subdivision Type
	Subdivision Plat
	Registered Land Survey
	Planned Community
	Division Type
	Lot
	Metes & Bounds
	Tax Parcel Type
	Real Property
	Easement Type
	Utility, Storm & Sanitary Sewer
	Drainage & Utility
	Drainage

Aerial Imagery Date: March 11 - April 4, 2024



The information on this map is a compilation of Ramsey County Records. THE COUNTY DOES NOT WARRANT OR GUARANTEE THE ACCURACY OF THIS DATA. The County disclaims any liability for any injuries, time delays, or expenses you may suffer if you rely in any manner on the accuracy of this data.

Produced by Information Services Enterprise GIS Division
RCGISMetaData@Co.Ramsey.MN.US

NOTE: This is not an official Ramsey County tax lot map. This is based on the data available in the Geographic Information System, which may vary from tax data officially recorded in the Tax System. For an official tax map, please contact the Office of Property Records and Revenue.

651-266-2000
AskPropertyTaxandRecords@co.ramsey.mn.us

Section 18
Ramsey County



S073023

1/3/2025