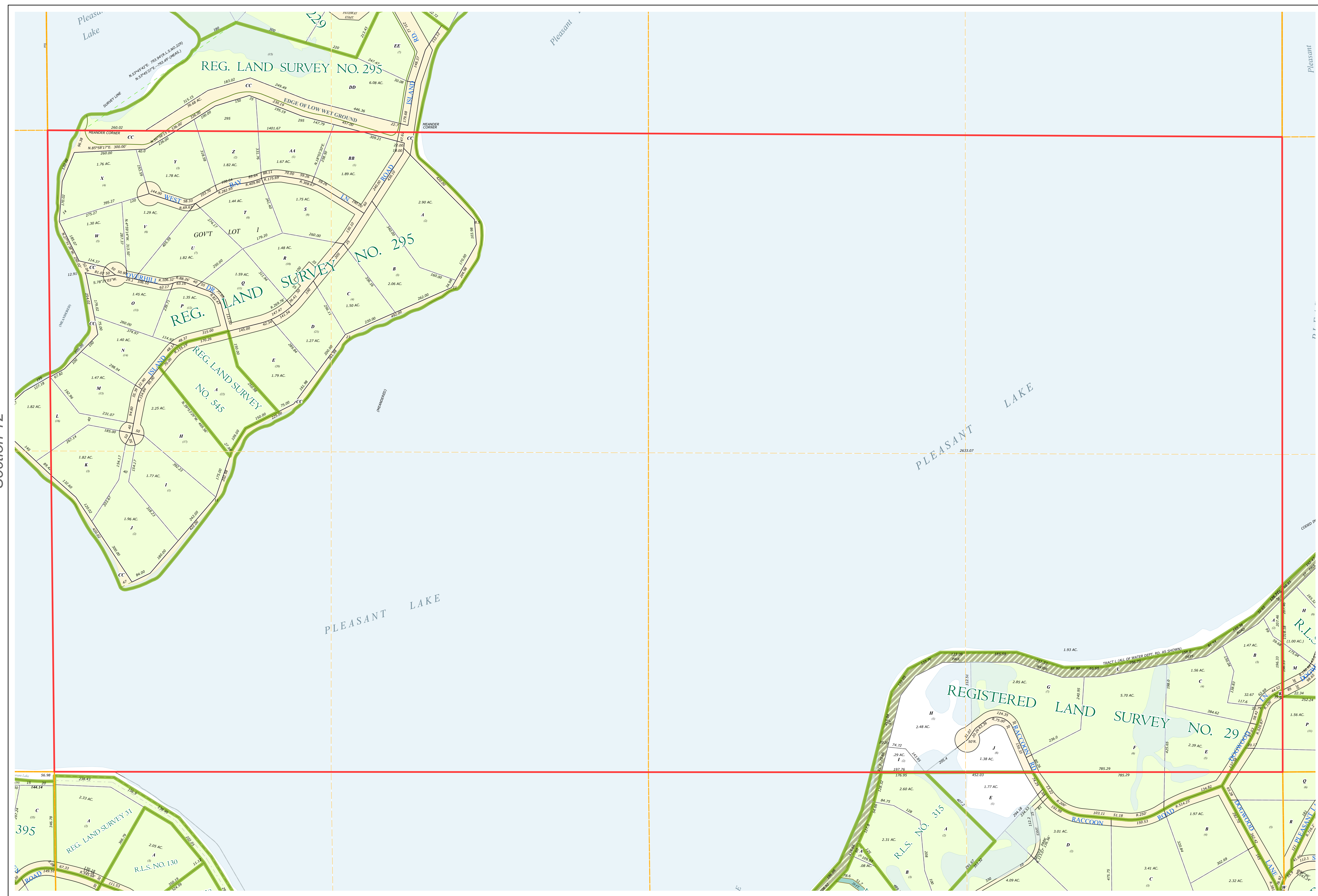
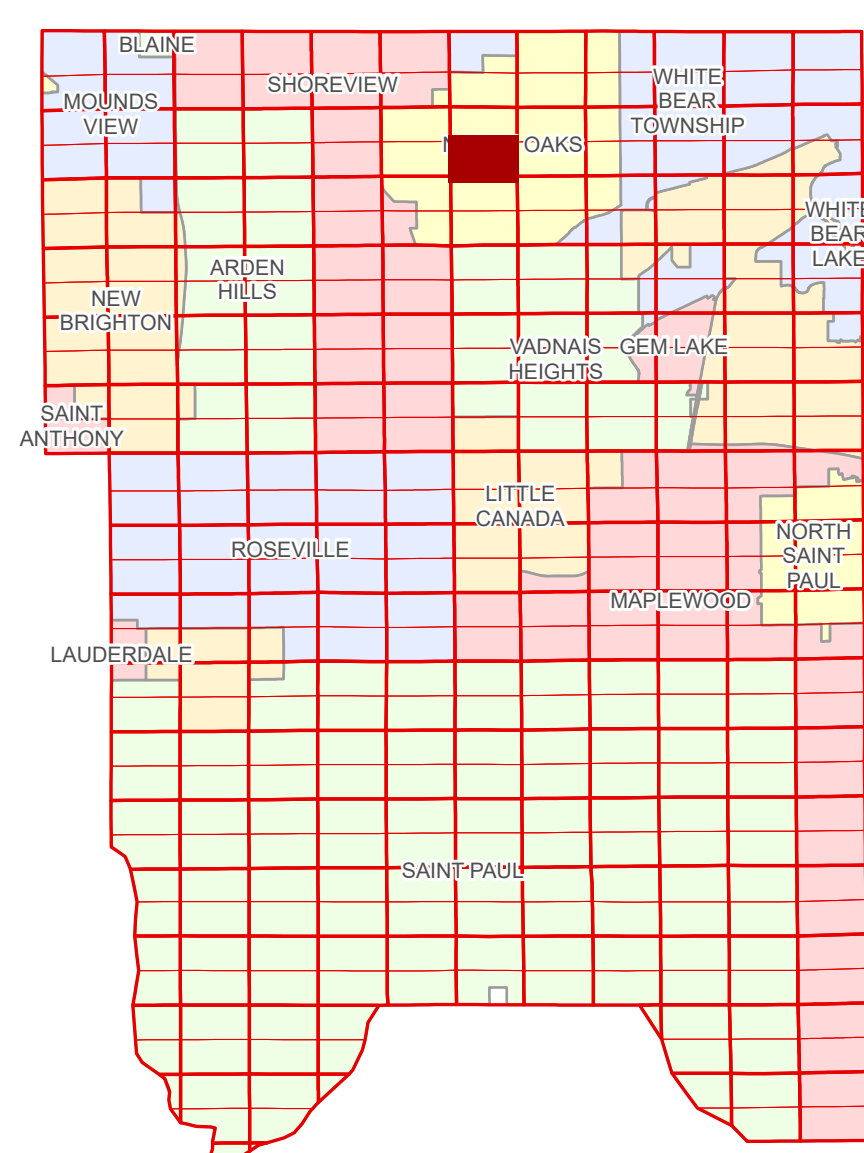


Ramsey County Minnesota Parcel Map

Ramsey County
Section 7

S Half
Section 7
T 30 N
R 22 W



Ramsey County
Section 12

Section 8
Ramsey County

Section 18
Ramsey County

Legend

Section	Metes & Bounds
Quarter	Tax Parcel Type
Quarter Quarter	Real Property
Subdivision Type	Easement Type
Registered Land Survey	Pedestrian
Division Type	Private Access
Lot	
Tract	

The information on this map is a compilation of Ramsey County Records. THE COUNTY DOES NOT WARRANT OR GUARANTEE THE ACCURACY OF THIS DATA. The County disclaims any liability for any injuries, time delays, or expenses you may suffer if you rely in any manner on the accuracy of this data.

Produced by Information Services Enterprise GIS Division
RCGISMetaData@Co.Ramsey.MN.US

NOTE: This is not an official Ramsey County tax lot map. This is based on the data available in the Geographic Information System, which may vary from tax data officially recorded in the Tax System. For an official tax map, please contact the Office of Property Records and Revenue.

651-266-2000
AskPropertyTaxandRecords@co.ramsey.mn.us



0 4590 180 270 360 Feet

1" = 200'
1:2,400

S073022
1/3/2025