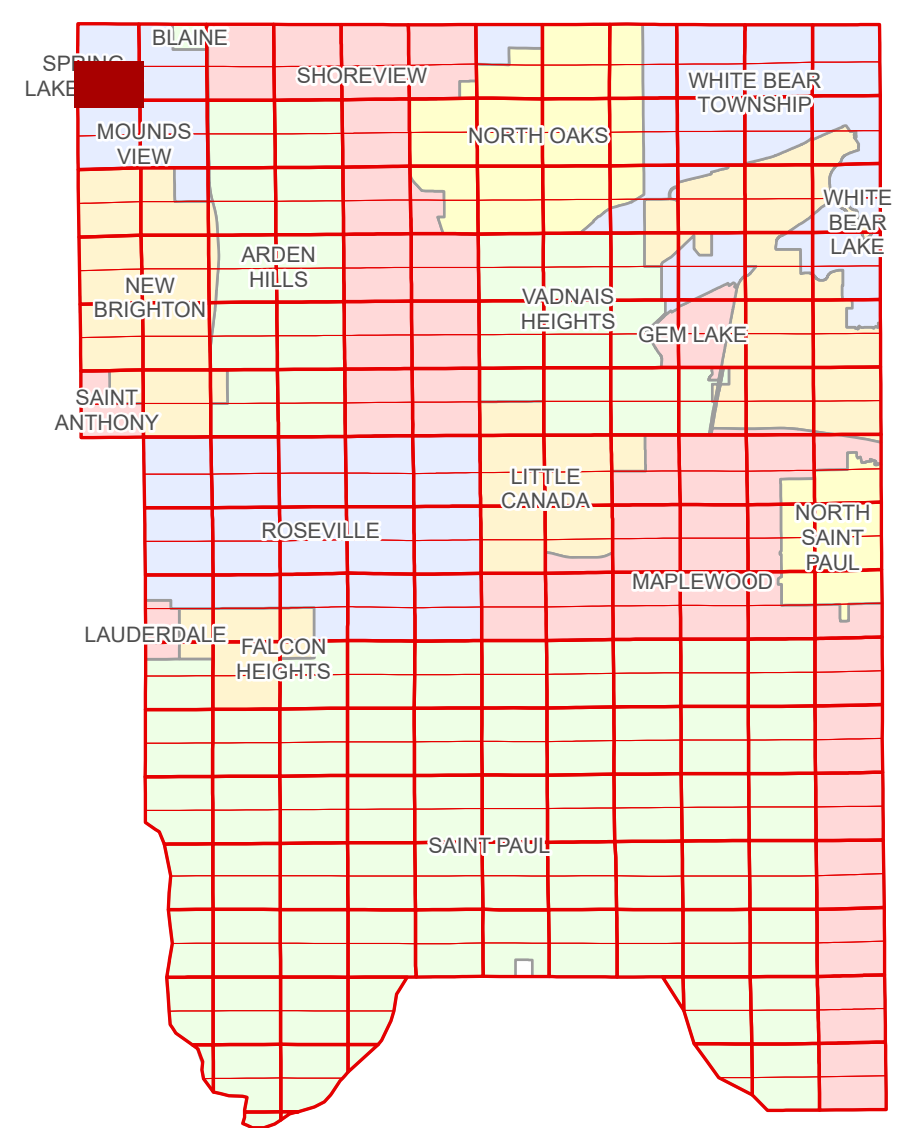


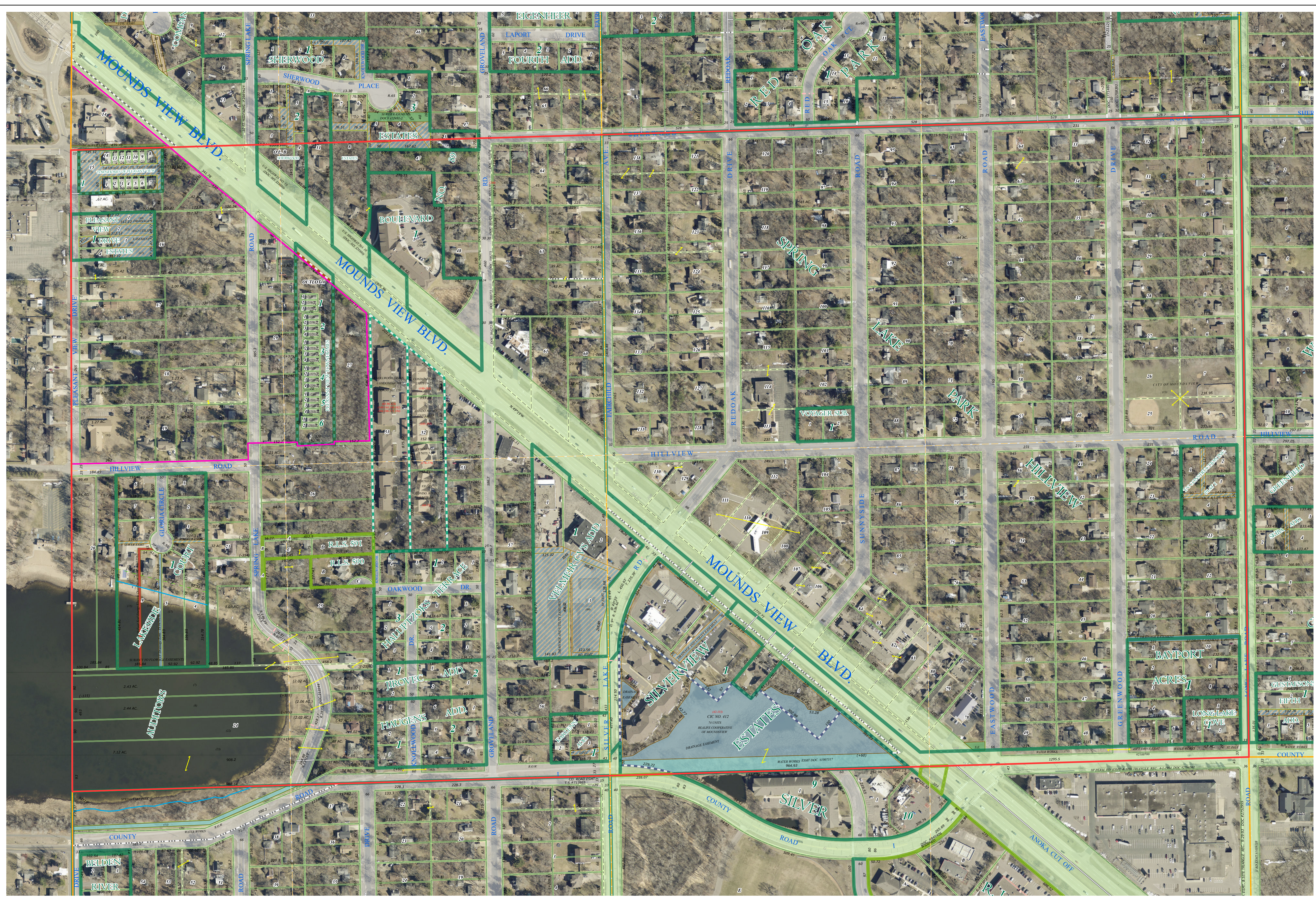
Ramsey County Minnesota Parcel Map

Ramsey County
Section 6

S Half
Section 6
T 30 N
R 23 W



Anoka County
Section 1



Section 5
Ramsey County

Legend			
	Section		Division Type
	Quarter		Lot
	Quarter Quarter		Metes & Bounds
	County Right of Way		Real Property
	Municipal Right of Way		Easement Type
	Subdivision Plat		Utility, Electric
	Registered Land Survey		Utility, Storm & Sanitary Sewer
	Planned Community		Utility, Water
	Cooperative		Drainage & Utility
	Condominium		Drainage

Aerial Imagery Date: March 11 - April 4, 2024



The information on this map is a compilation of Ramsey County Records. THE COUNTY DOES NOT WARRANT OR GUARANTEE THE ACCURACY OF THIS DATA. The County disclaims any liability for any injuries, time delays, or expenses you may suffer if you rely in any manner on the accuracy of this data.

Produced by Information Services Enterprise GIS Division
RCGISMetaData@Co.Ramsey.MN.US

NOTE: This is not an official Ramsey County tax lot map. This is based on the data available in the Geographic Information System, which may vary from tax data officially recorded in the Tax System. For an official tax map, please contact the Office of Property Records and Revenue.

651-266-2000
AskPropertyTaxandRecords@co.ramsey.mn.us

Section 7
Ramsey County



S063023
1/3/2025