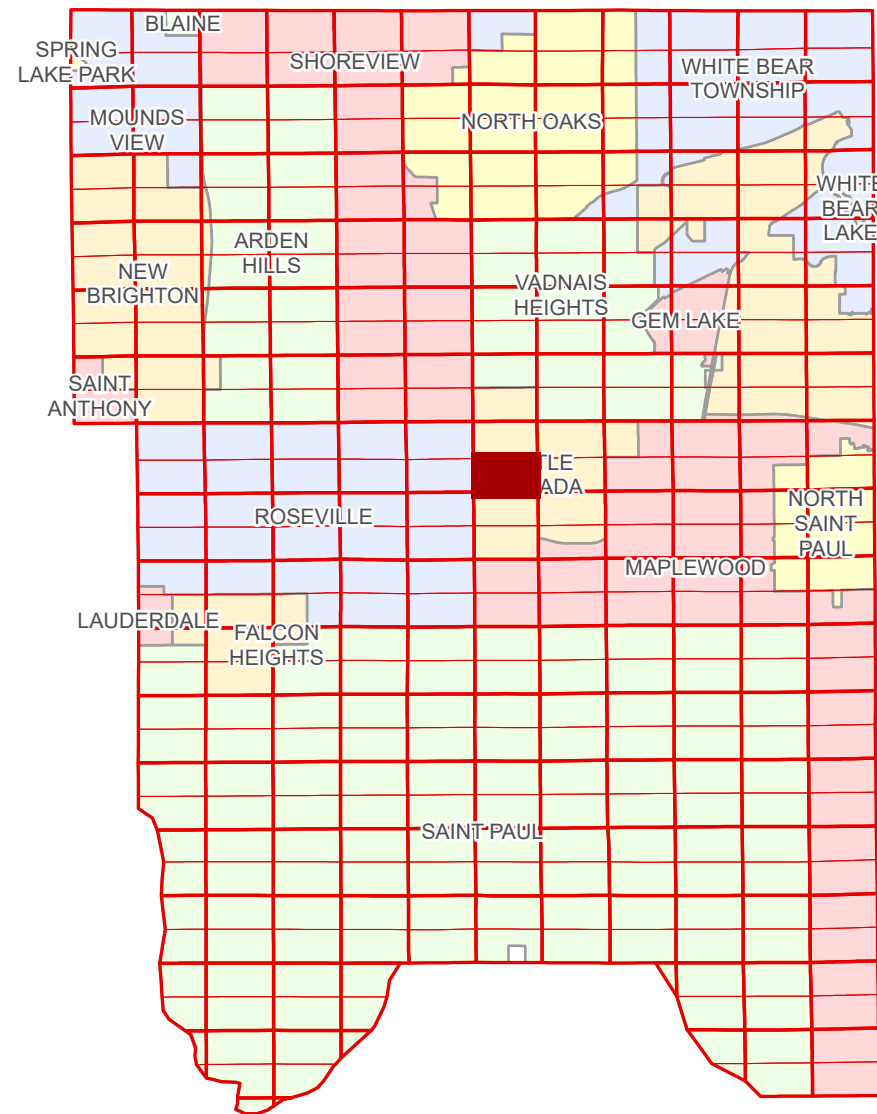


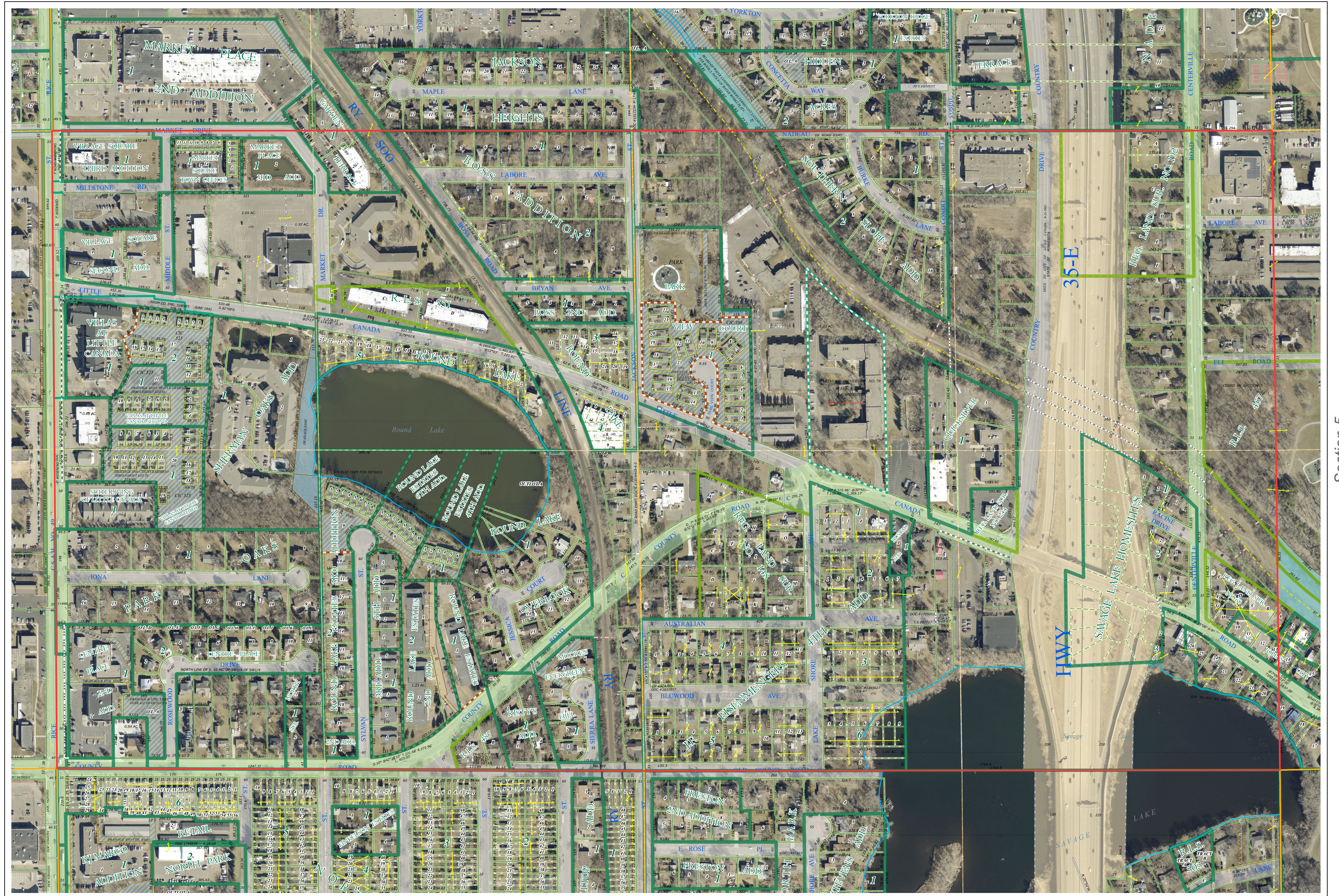
S Half
Section 6
T 29 N
R 22 W

Ramsey County Minnesota Parcel Map

Ramsey County
Section 6



Ramsey County
Section 1



Section 5
Ramsey County

Legend			
	Section		Metes & Bounds
	Quarter		Tax Parcel Type
	Quarter Quarter		State Assessed Property
	Federal Right of Way		Real Property
	County Right of Way		Easement Type
	Municipal Right of Way		Pedestrian
	Subdivision Type		Utility, Storm & Sanitary Sewer
	Subdivision Plat		Drainage & Utility
	Registered Land Survey		Drainage
	Planned Community		Misc Easements
	Condominium		
	Division Type		
	Lot		

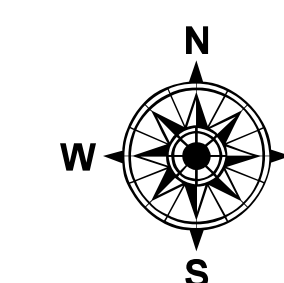
Aerial Imagery Date: March 11 - April 4, 2024



The information on this map is a compilation of Ramsey County Records. THE COUNTY DOES NOT WARRANT OR GUARANTEE THE ACCURACY OF THIS DATA. The County disclaims any liability for any injuries, time delays, or expenses you may suffer if you rely in any manner on the accuracy of this data.
Produced by Information Services Enterprise GIS Division
RCGISMetaData@Co.Ramsey.MN.US

NOTE: This is not an official Ramsey County tax lot map. This is based on the data available in the Geographic Information System, which may vary from tax data officially recorded in the Tax System. For an official tax map, please contact the Office of Property Records and Revenue.
651-266-2000
AskPropertyTaxandRecords@co.ramsey.mn.us

Section 7
Ramsey County



0 4590 180 270 360 Feet
1" = 200'
1:2,400

S062922

1/3/2025