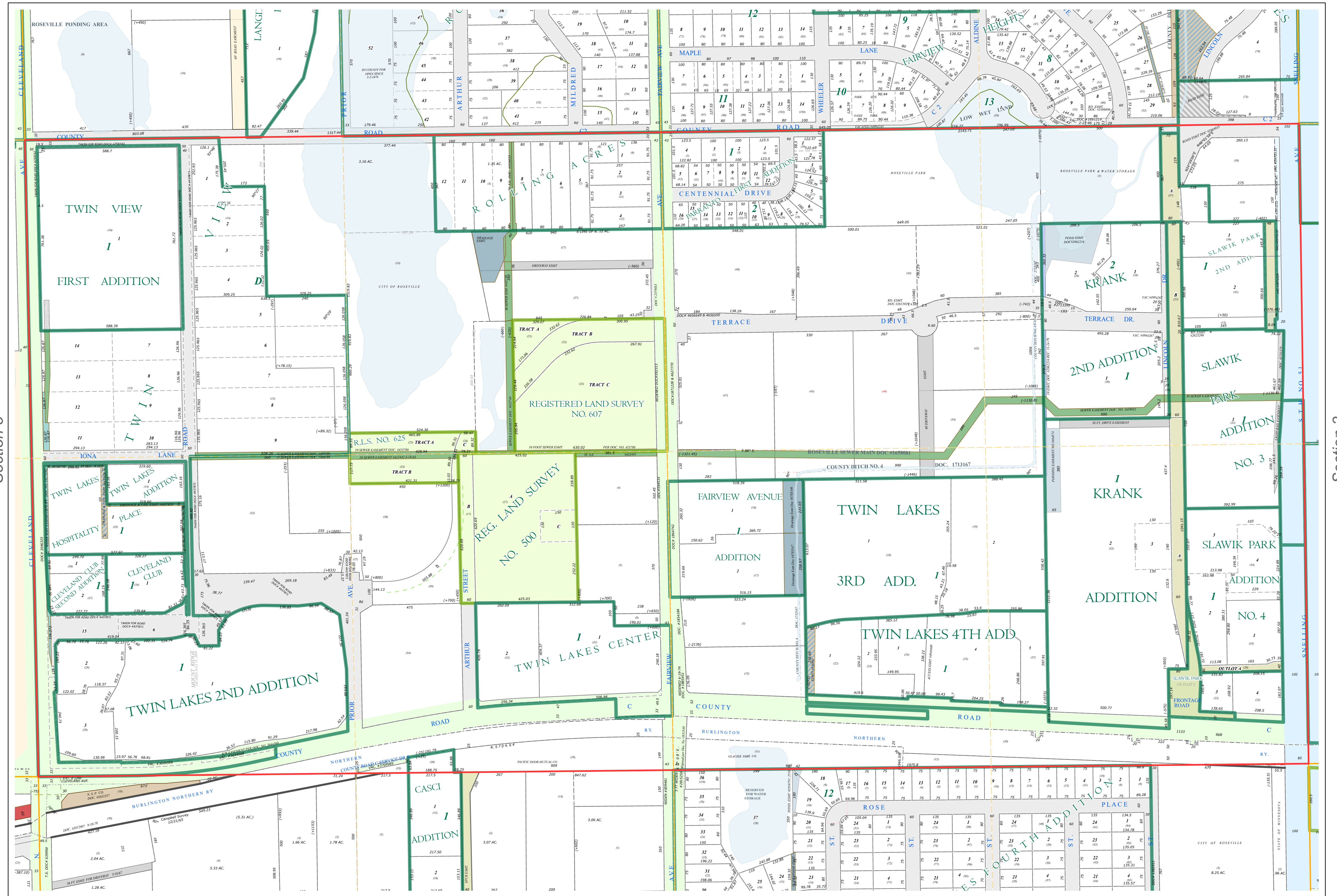
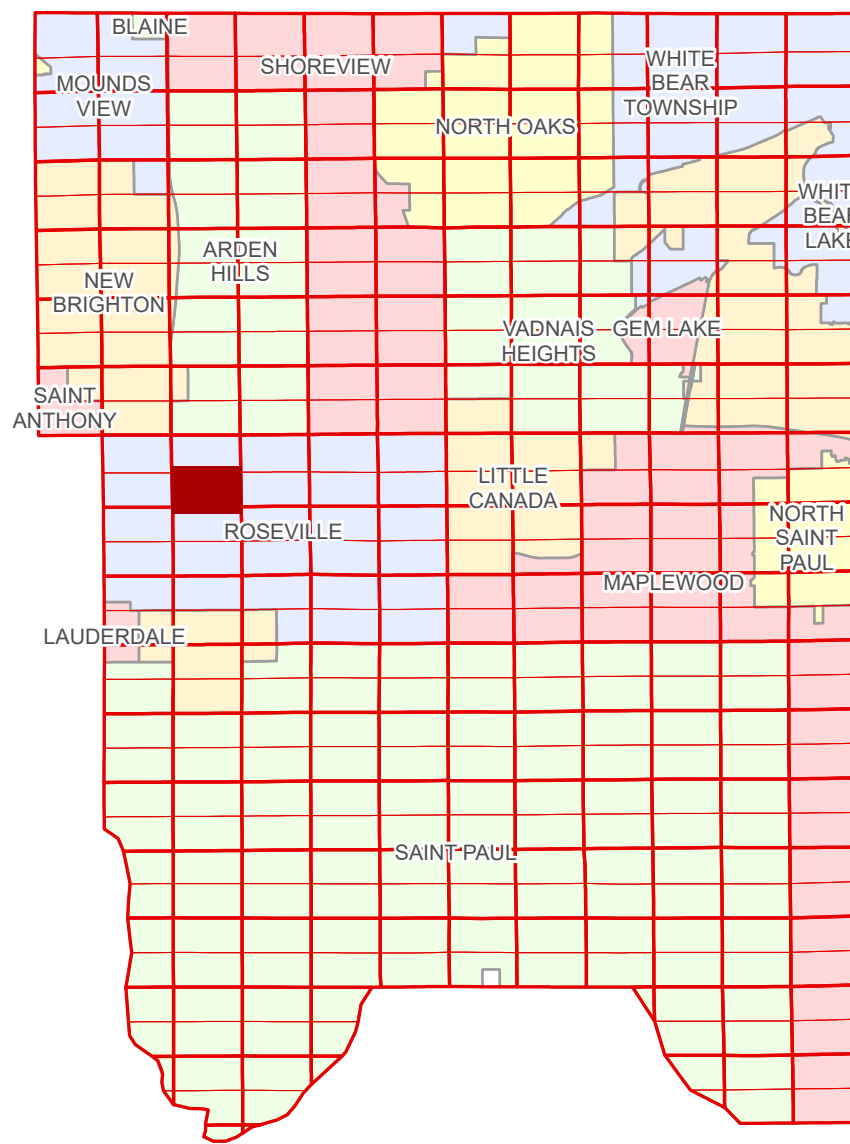


S Half  
Section 4  
T 29 N  
R 23 W

# Ramsey County Minnesota Parcel Map

Ramsey County  
Section 4



Ramsey County  
Section 5

Section 3  
Ramsey County

Legend			
	Section		Tax Parcel Type
	Quarter		State Assessed Property
	Quarter Quarter		Real Property
	State Right of Way		Easement Type
	County Right of Way		Ditch, County & Judicial
	Municipal Right of Way		Ponding
	Subdivision Type		Pedestrian
	Subdivision Plat		Private Driveway
	Registered Land Survey		Public Right of Way
	Division Type		Railroad
	Lot		Utility, Storm & Sanitary Sewer
	Outlot		Utility, Water
	Tract		Drainage & Utility
	Metes & Bounds		Drainage
			Misc Easements

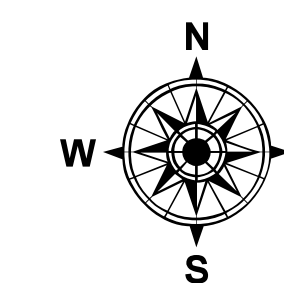
The information on this map is a compilation of Ramsey County Records. THE COUNTY DOES NOT WARRANT OR GUARANTEE THE ACCURACY OF THIS DATA. THE County disclaims any liability for any injuries, time delays, or expenses you may suffer if you rely in any manner on the accuracy of this data.

Produced by Information Services Enterprise GIS Division  
RCGSMetaData@Co.Ramsey.MN.US

NOTE: This is not an official Ramsey County tax lot map. This is based on the data available in the Geographic Information System, which may vary from tax data officially recorded in the Tax System. For an official tax map, please contact the Office of Property Records and Revenue.

651-266-2000  
AskPropertyTaxandRecords@co.ramsey.mn.us

Section 9  
Ramsey County



0 4590 180 270 360  
Feet

1" = 200'

1:2,400

S042923

1/3/2025