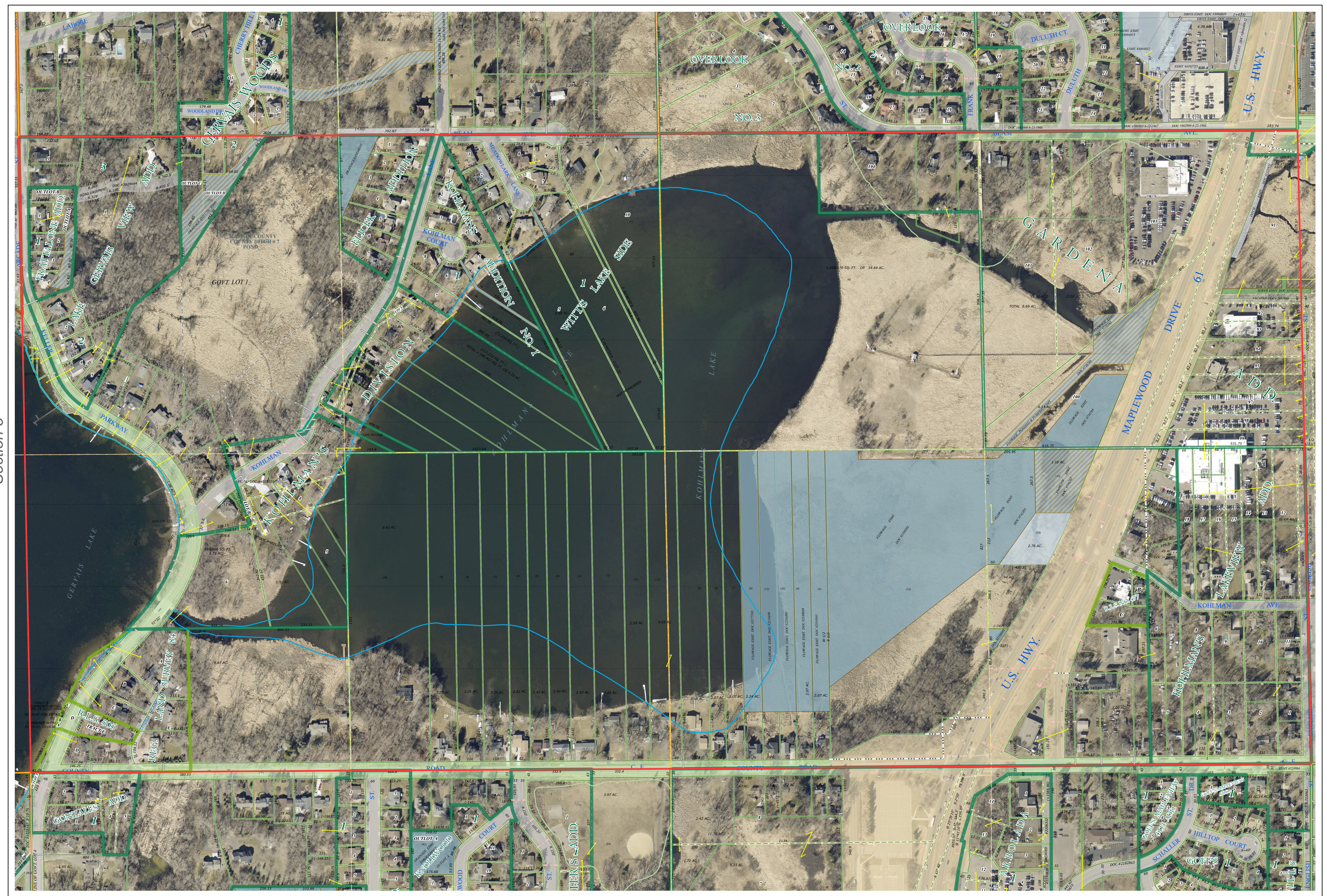
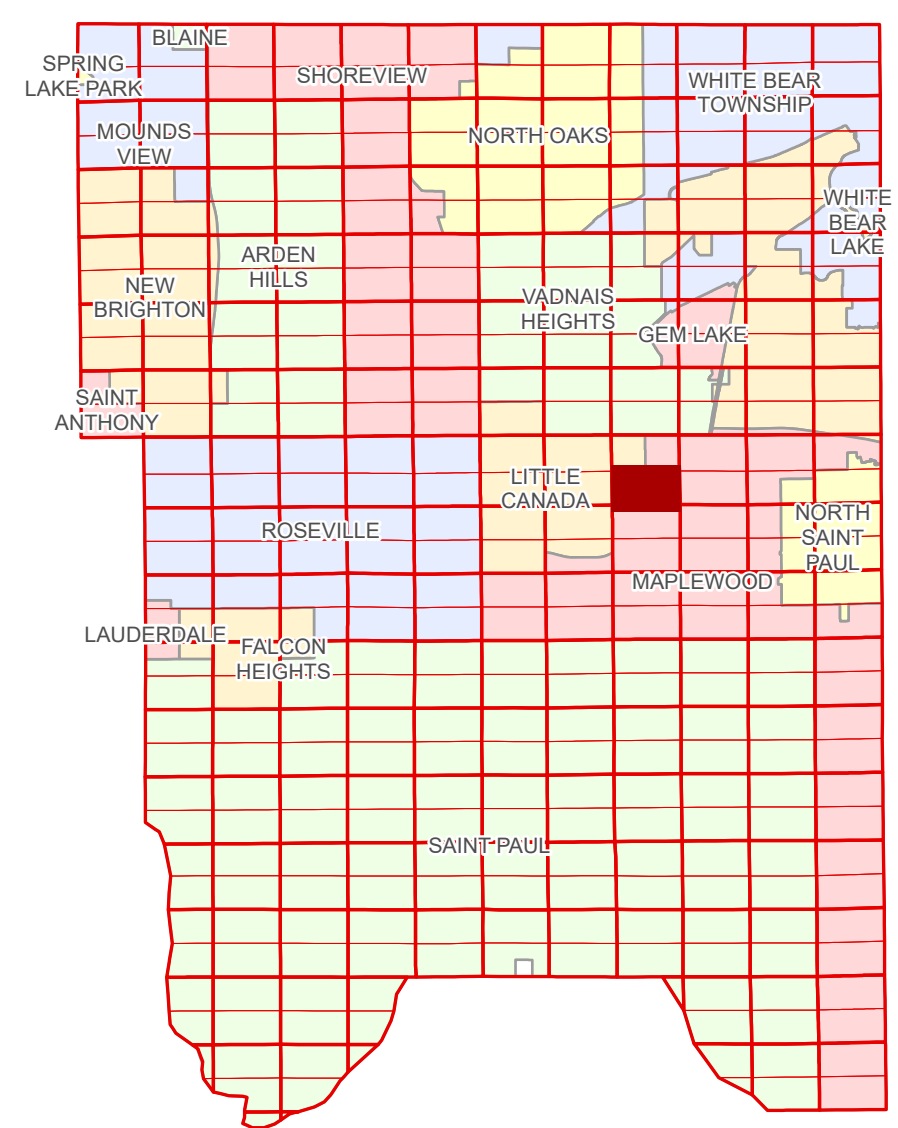


# Ramsey County Minnesota Parcel Map

Ramsey County  
Section 4

S Half  
Section 4  
T 29 N  
R 22 W



Ramsey County  
Section 5

Section 3  
Ramsey County

**Legend**

Section	Metes & Bounds
Quarter	<b>Tax Parcel Type</b>
Quarter Quarter	Real Property
Federal Right of Way	<b>Easement Type</b>
County Right of Way	Ponding
Municipal Right of Way	Private Access
<b>Subdivision Type</b>	Utility, Storm & Sanitary Sewer
Subdivision Plat	Drainage & Utility
Registered Land Survey	Drainage
Auditor's Subdivision	Misc Easements
<b>Division Type</b>	
Lot	

The information on this map is a compilation of Ramsey County Records. THE COUNTY DOES NOT WARRANT OR GUARANTEE THE ACCURACY OF THIS DATA. The County disclaims any liability for any injuries, time delays, or expenses you may suffer if you rely in any manner on the accuracy of this data.

Produced by Information Services Enterprise GIS Division  
RCGISMetaData@Co.Ramsey.MN.US

NOTE: This is not an official Ramsey County tax lot map. This is based on the data available in the Geographic Information System, which may vary from tax data officially recorded in the Tax System. For an official tax map, please contact the Office of Property Records and Revenue.

651-266-2000  
AskPropertyTaxandRecords@co.ramsey.mn.us

Section 9  
Ramsey County

Aerial Imagery Date: March 11 - April 4, 2024



**S042922**  
1/3/2025