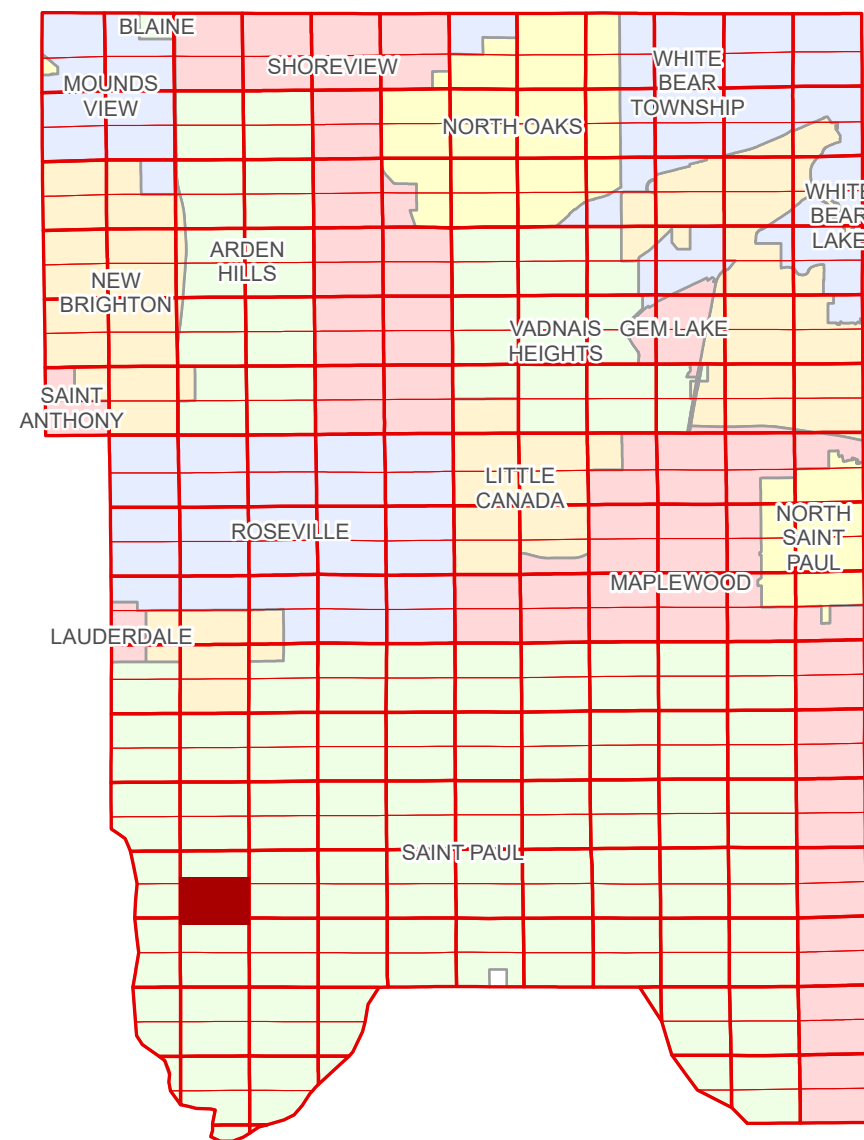


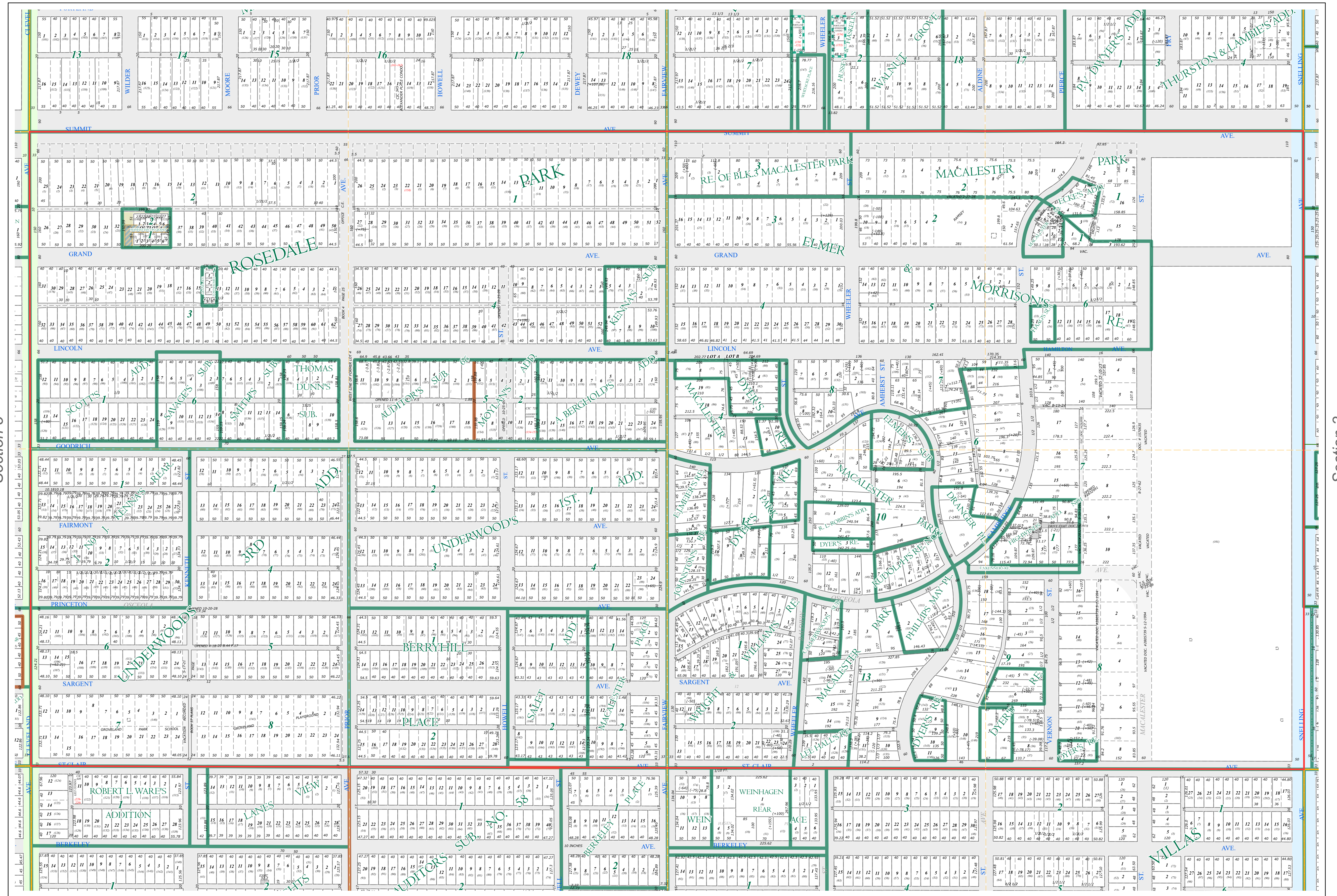
S Half  
Section 4  
T 28 N  
R 23 W

# Ramsey County Minnesota Parcel Map

Ramsey County  
Section 4



Ramsey County  
Section 5



Ramsey County  
Section 3

Legend			
	Section		Division Type
	Quarter		Lot
	Quarter Quarter		Outlot
	State Right of Way		Tax Parcel Type
	County Right of Way		Personal Property
	Municipal Right of Way		Real Property
	Subdivision Type		Easement Type
	Subdivision Plat		Private Driveway
	Auditors's Subdivision		Drainage & Utility

The information on this map is a compilation of Ramsey County Records. THE COUNTY DOES NOT WARRANT OR GUARANTEE THE ACCURACY OF THIS DATA. The County disclaims any liability for any injuries, time delays, or expenses you may suffer if you rely in any manner on the accuracy of this data.

NOTE: This is not an official Ramsey County tax lot map. This is based on the data available in the Geographic Information System, which may vary from tax data officially recorded in the Tax System. For an official tax map, please contact the Office of Property Records and Revenue.

Produced by Information Services Enterprise GIS Division  
RCGSMetaData@Co.Ramsey.MN.US

651-266-2000  
AskPropertyTaxandRecords@co.ramsey.mn.us

Section 9  
Ramsey County

