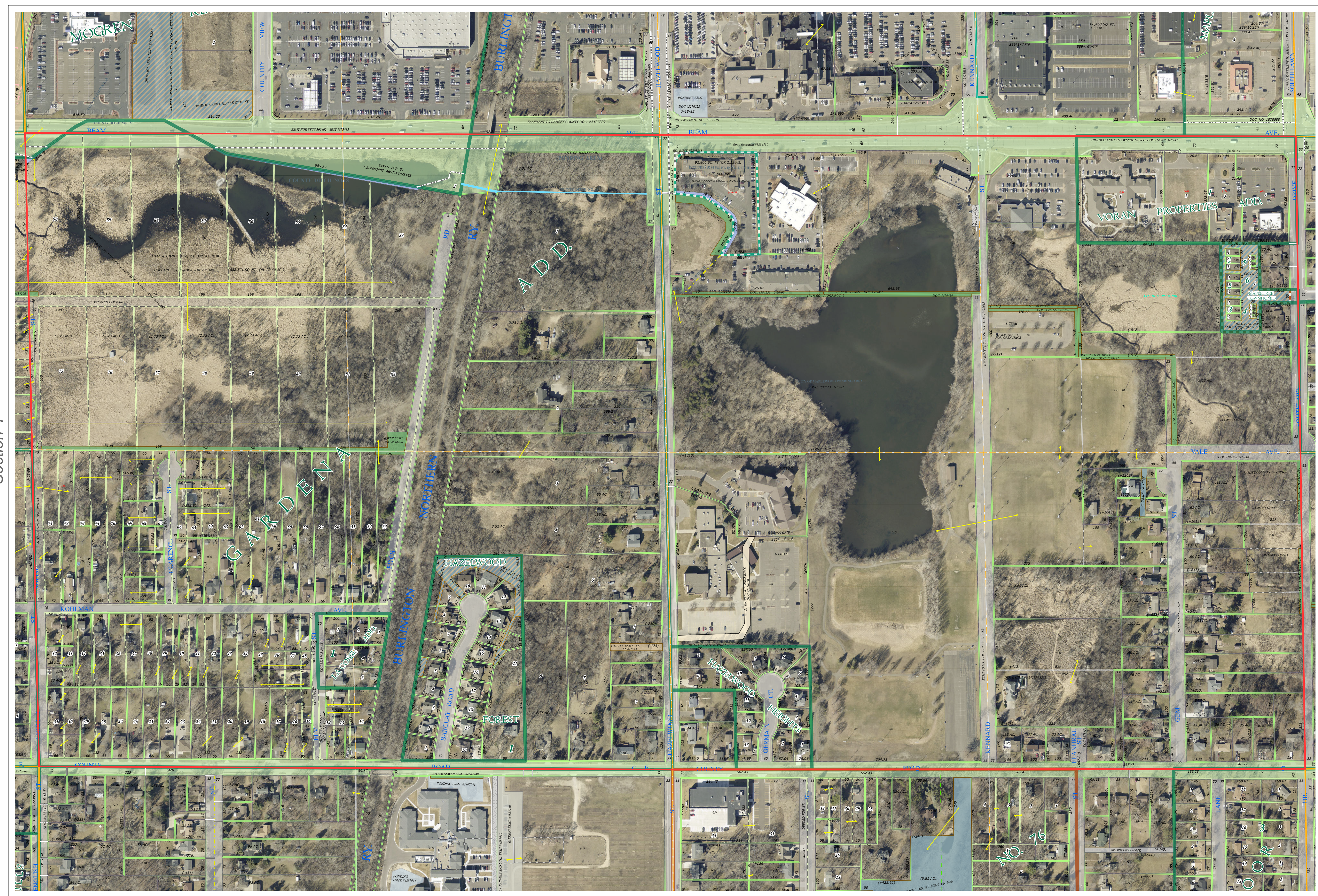
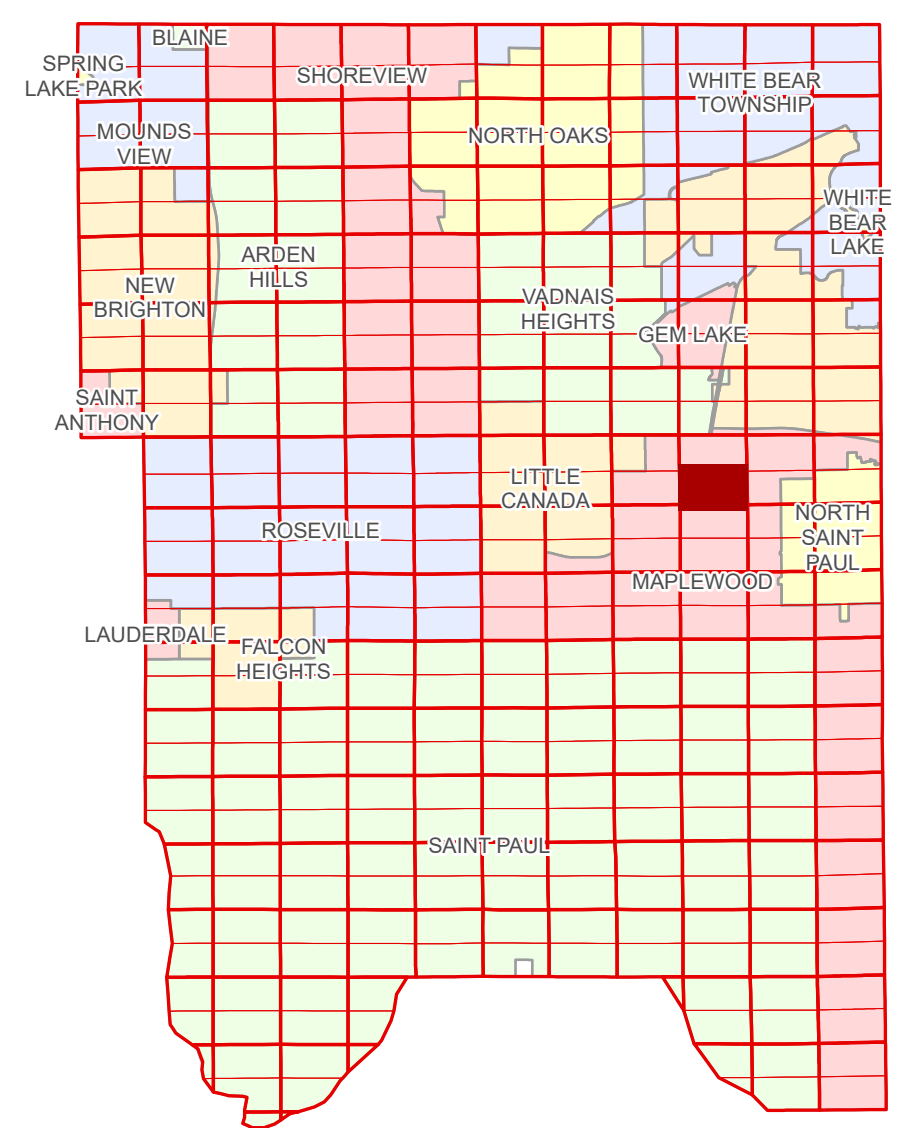


Ramsey County Minnesota Parcel Map

Ramsey County
Section 3

S Half
Section 3
T 29 N
R 22 W



Ramsey County
Section 4

Section 2
Ramsey County

Legend			
	Section		Metes & Bounds
	Quarter		Tax Parcel Type Real Property
	Quarter Quarter		Easement Type
	County Right of Way		Ditch, County & Judicial
	Municipal Right of Way		Pedestrian
	Subdivision Type		Private Access
	Subdivision Plat		Utility, Storm & Sanitary Sewer
	Auditors's Subdivision		Utility, Unidentified
	Planned Community		Drainage & Utility
	Condominium		Drainage
	Division Type		Misc Easements
	Lot		

The information on this map is a compilation of Ramsey County Records. THE COUNTY DOES NOT WARRANT OR GUARANTEE THE ACCURACY OF THIS DATA. The County disclaims any liability for any injuries, time delays, or expenses you may suffer if you rely in any manner on the accuracy of this data.

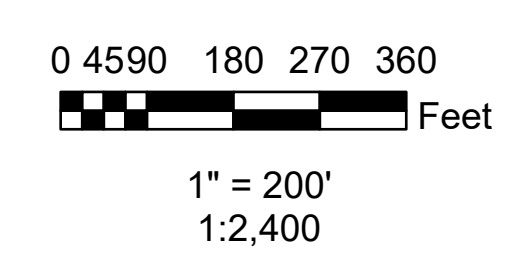
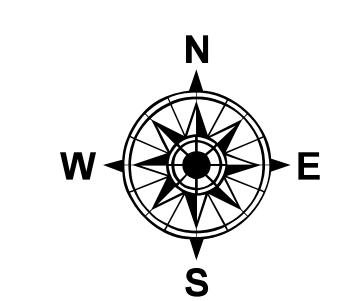
Produced by Information Services Enterprise GIS Division
RCGISMetaData@Co.Ramsey.MN.US

NOTE: This is not an official Ramsey County tax lot map. This is based on the data available in the Geographic Information System, which may vary from tax data officially recorded in the Tax System. For an official tax map, please contact the Office of Property Records and Revenue.

651-266-2000
AskPropertyTaxandRecords@co.ramsey.mn.us

Section 10
Ramsey County

Aerial Imagery Date: March 11 - April 4, 2024



S032922
1/3/2025