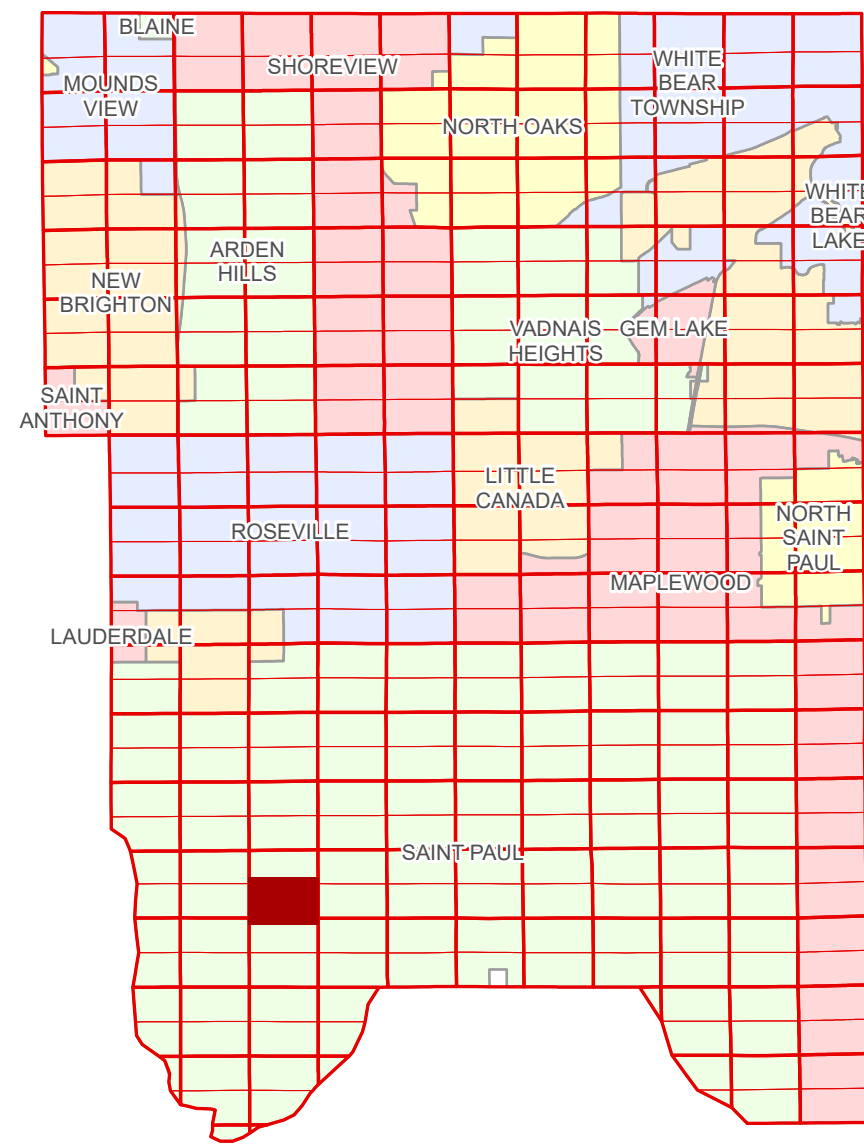


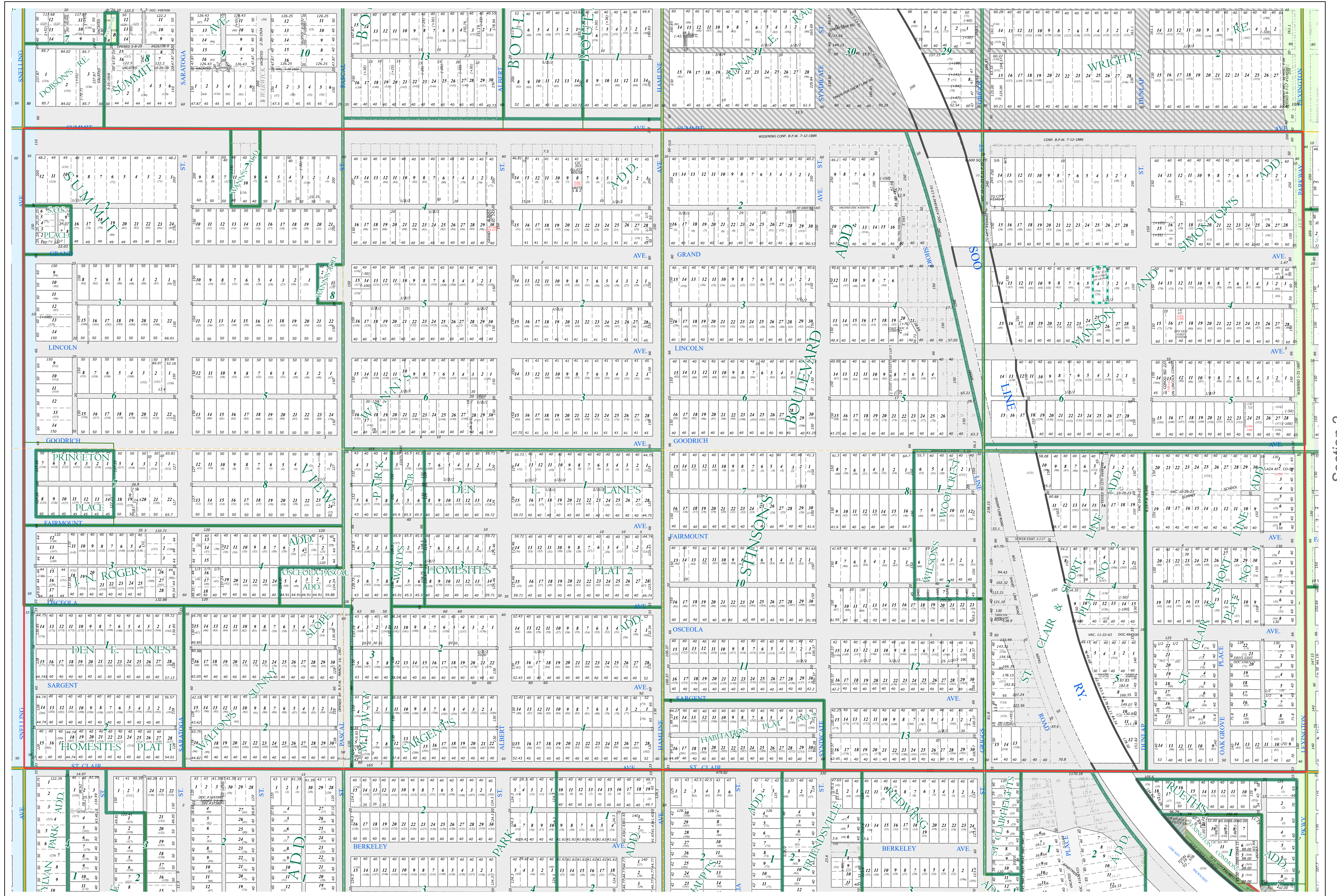
S Half
Section 3
T 28 N
R 23 W

Ramsey County Minnesota Parcel Map

Ramsey County
Section 3



Ramsey County
Section 4



Ramsey County
Section 2

Legend

Section	Division Type
Quarter	<input type="checkbox"/> Lot
Quarter Quarter	<input type="checkbox"/> Metes & Bounds
State Right of Way	Tax Parcel Type
County Right of Way	<input type="checkbox"/> Personal Property
Municipal Right of Way	<input type="checkbox"/> State Assessed Property
Subdivision Type	<input type="checkbox"/> Real Property
Subdivision Plat	Easement Type
Condominium	Pedestrian
	Private Driveway

The information on this map is a compilation of Ramsey County Records. THE COUNTY DOES NOT WARRANT OR GUARANTEE THE ACCURACY OF THIS DATA. The County disclaims any liability for any injuries, time delays, or expenses you may suffer if you rely in any manner on the accuracy of this data.

Produced by Information Services Enterprise GIS Division
RCGSMetaData@Co.Ramsey.MN.US

NOTE: This is not an official Ramsey County tax lot map. This is based on the data available in the Geographic Information System, which may vary from tax data officially recorded in the Tax System. For an official tax map, please contact the Office of Property Records and Revenue.

651-266-2000
AskPropertyTaxandRecords@co.ramsey.mn.us

Section 10
Ramsey County

0 4590 180 270 360 Feet

1" = 200'
1:2400

S032823

1/3/2025