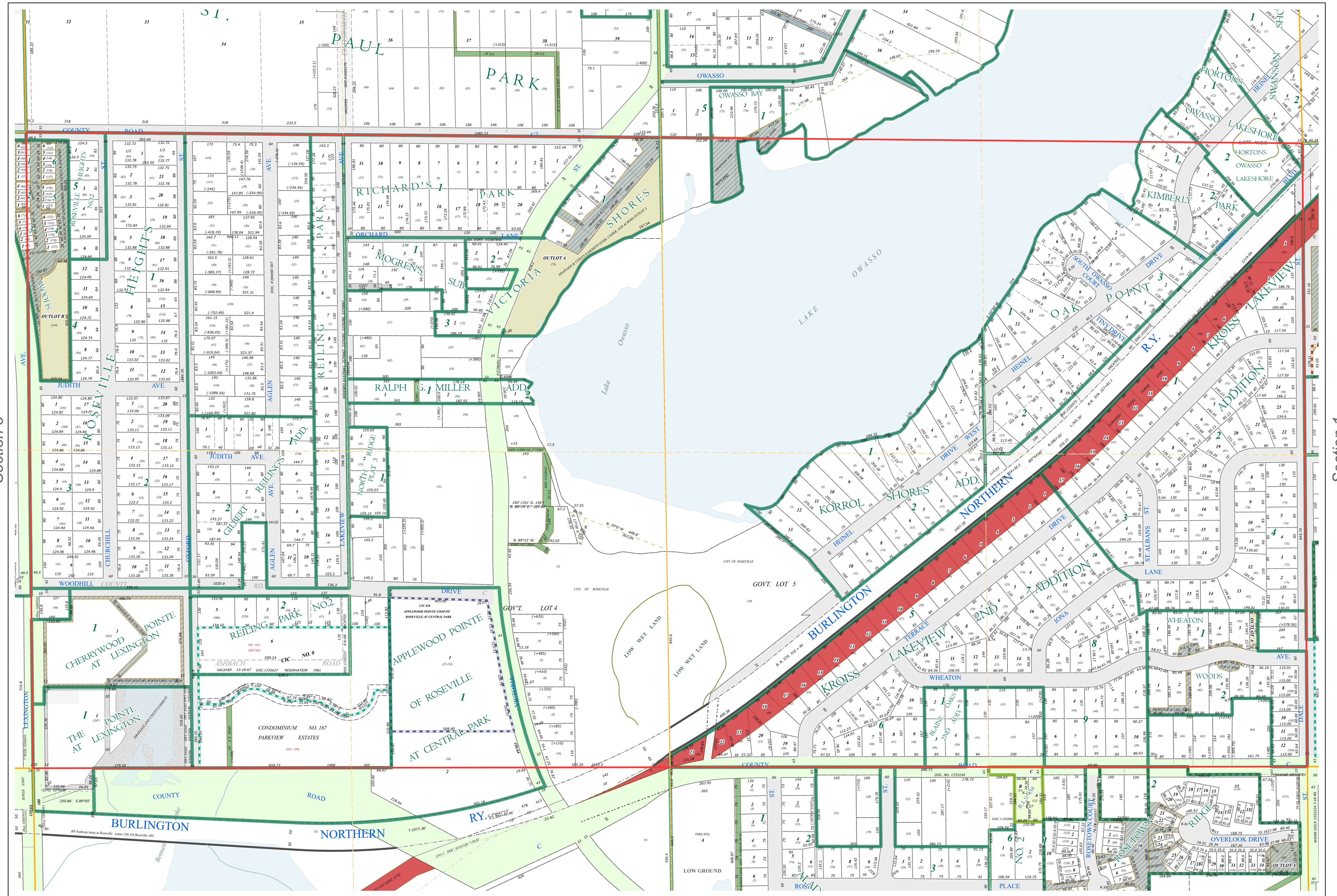
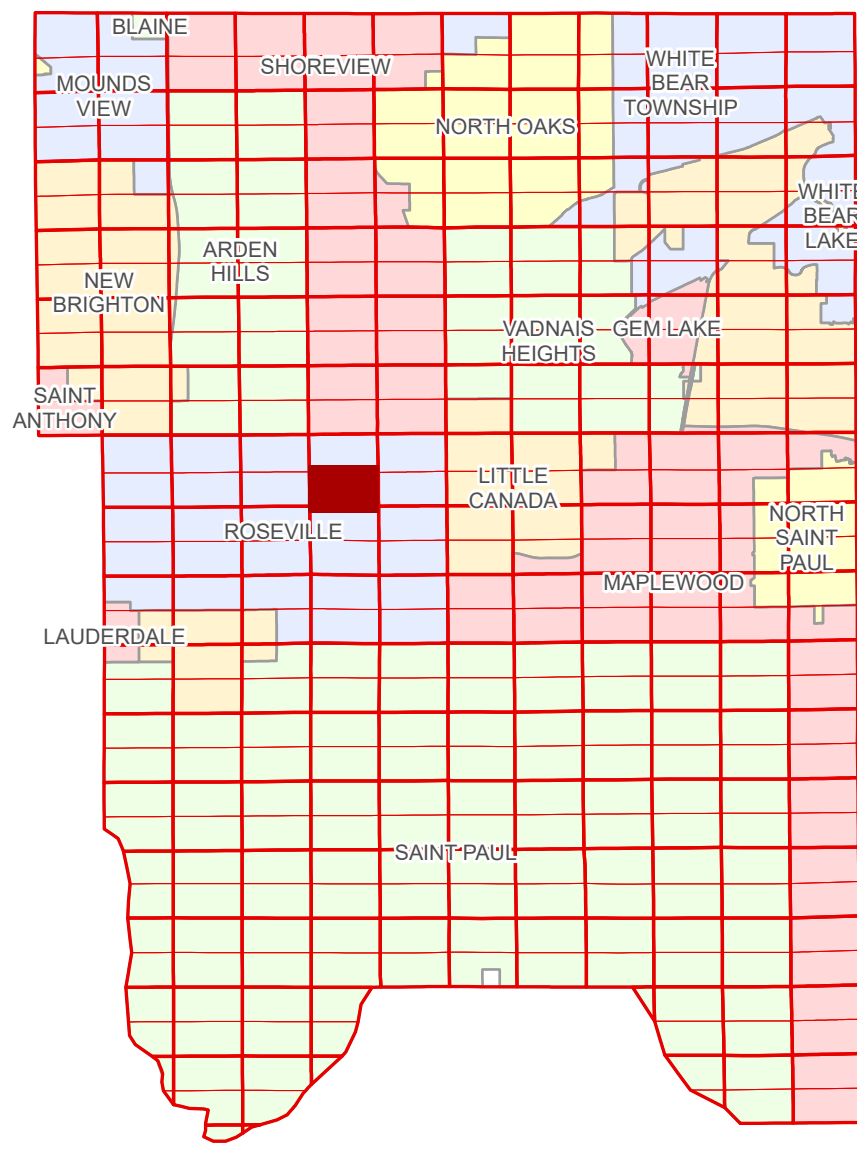


Ramsey County Minnesota Parcel Map

Ramsey County
Section 2

S Half
Section 2
T 29 N
R 23 W



Legend

Section	Metes & Bounds
Quarter	Tax Parcel Type
Quarter Quarter	State Assessed Property
County Right of Way	Real Property
Municipal Right of Way	Easement Type
Subdivision Type	Private Driveway
Subdivision Plat	Utility, Electric
Planned Community	Utility, Storm & Sanitary Sewer
Cooperative	Utility, Water
Condominium	Drainage & Utility
Division Type	Misc Easements
Lot	
Outlot	

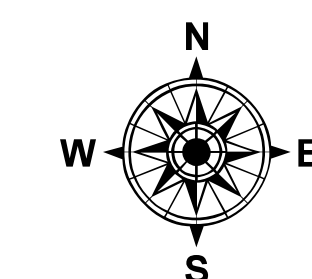
The information on this map is a compilation of Ramsey County Records. THE COUNTY DOES NOT WARRANT OR GUARANTEE THE ACCURACY OF THIS DATA. The County disclaims any liability for any injuries, time delays, or expenses you may suffer if you rely in any manner on the accuracy of this data.

Produced by Information Services Enterprise GIS Division
RCGSMetaData@Co.Ramsey.MN.US

NOTE: This is not an official Ramsey County tax map. This is based on the data available in the Geographic Information System, which may vary from tax data officially recorded in the Tax System. For an official tax map, please contact the Office of Property Records and Revenue.

651-266-2000
AskPropertyTaxandRecords@co.ramsey.mn.us

Section 11
Ramsey County



0 4590 180 270 360
Feet

1" = 200'
1:2,400

S022923

1/3/2025