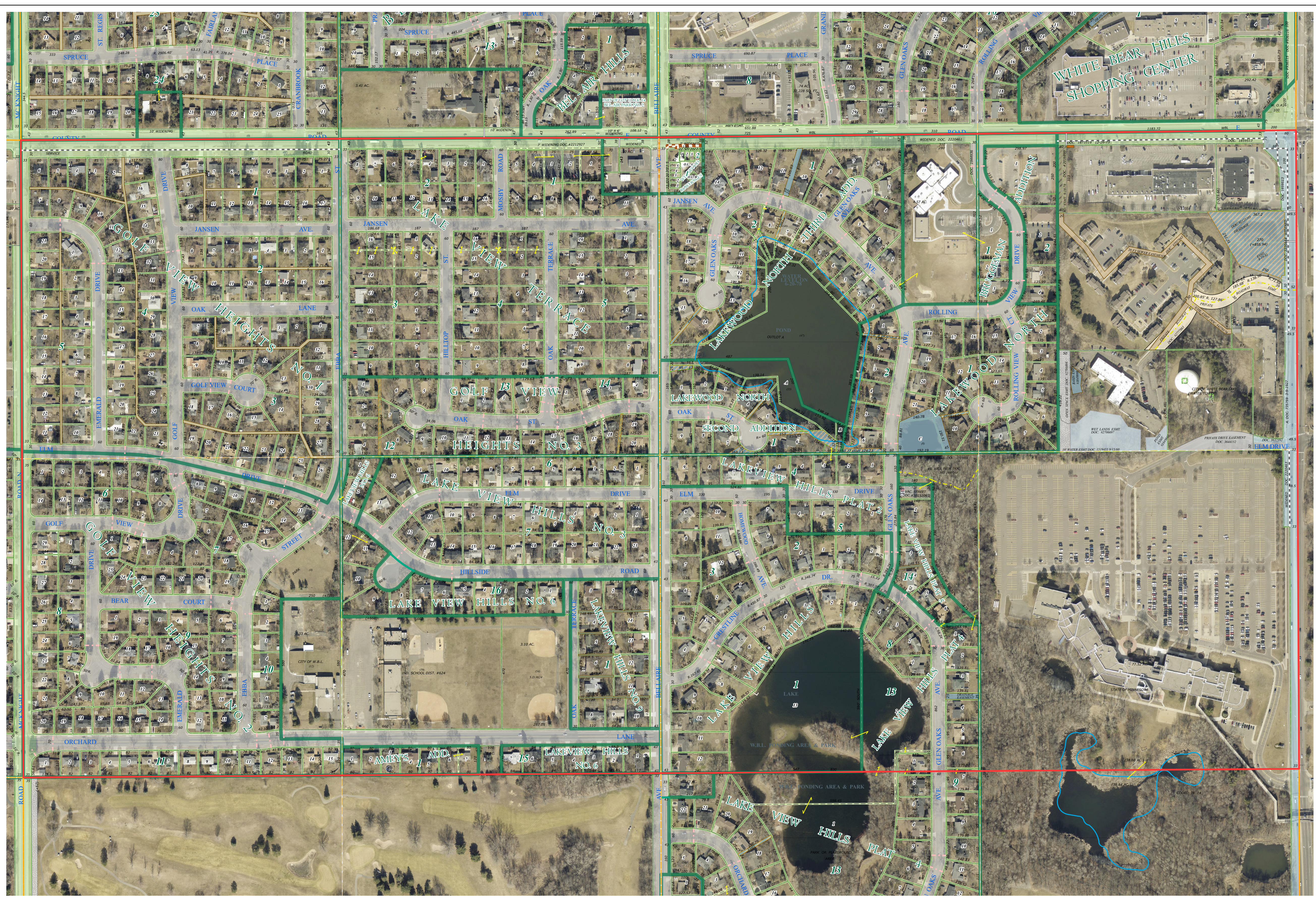
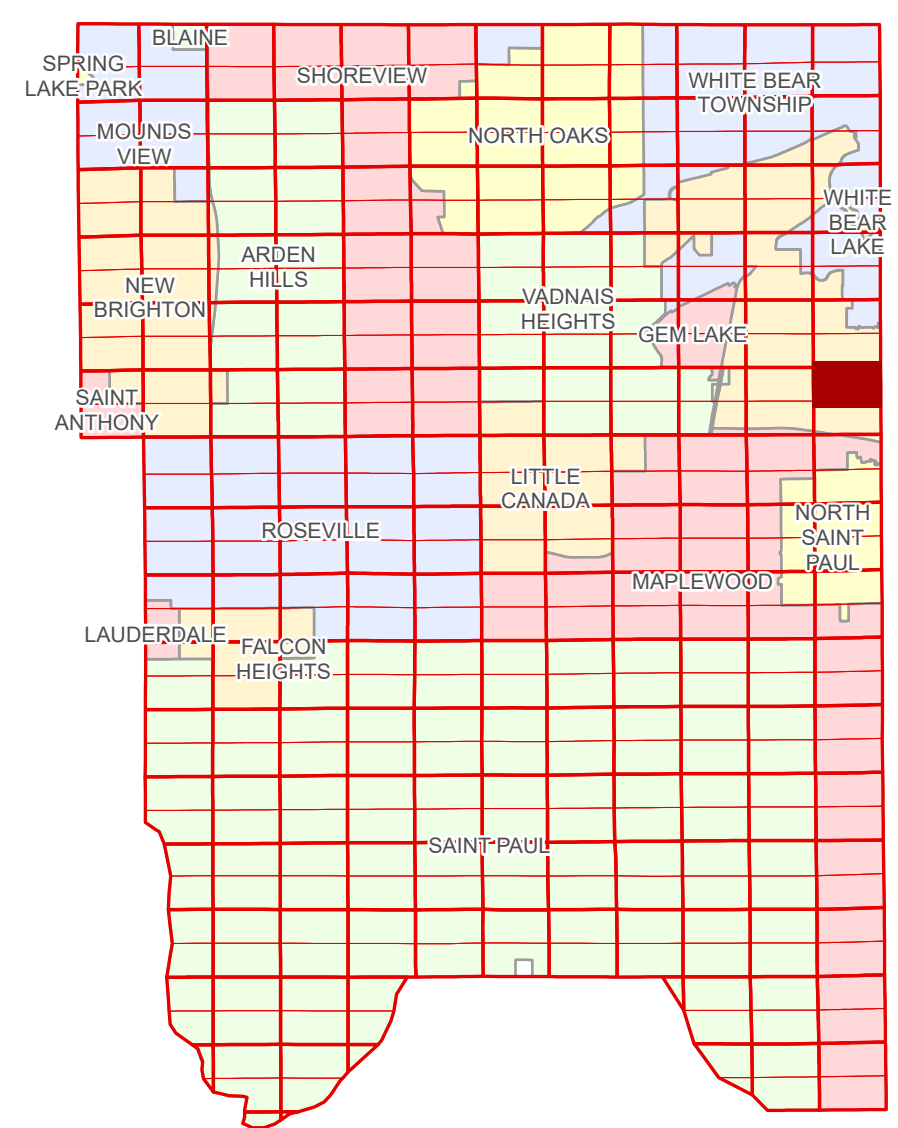


# Ramsey County Minnesota Parcel Map

N Half  
Section 36  
T 30 N  
R 22 W

Ramsey County  
Section 25



Ramsey County  
Section 35

Section 31  
Washington County

Legend	
	Section
	Quarter
	Quarter Quarter
	State Right of Way
	County Right of Way
	Municipal Right of Way
<b>Subdivision Type</b>	
	Subdivision Plat
	Planned Community
<b>Division Type</b>	
	Lot
	Metes & Bounds
<b>Tax Parcel Type</b>	
	Personal Property
	Real Property
<b>Easement Type</b>	
	Ponding
	Pedestrian
	Private Access
	Private Driveway
	Utility, Communication
	Utility, Storm & Sanitary Sewer
	Utility, Unidentified
	Drainage & Utility
	Drainage
	Misc Easements

Aerial Imagery Date: March 11 - April 4, 2024



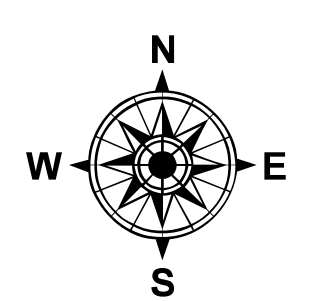
The information on this map is a compilation of Ramsey County Records. THE COUNTY DOES NOT WARRANT OR GUARANTEE THE ACCURACY OF THIS DATA. The County disclaims any liability for any injuries, time delays, or expenses you may suffer if you rely in any manner on the accuracy of this data.

Produced by Information Services Enterprise GIS Division  
RCGISMetaData@Co.Ramsey.MN.US

NOTE: This is not an official Ramsey County tax lot map. This is based on the data available in the Geographic Information System, which may vary from tax data officially recorded in the Tax System. For an official tax map, please contact the Office of Property Records and Revenue.

651-266-2000  
AskPropertyTaxandRecords@co.ramsey.mn.us

Section 36  
Ramsey County



N363022

1/3/2025