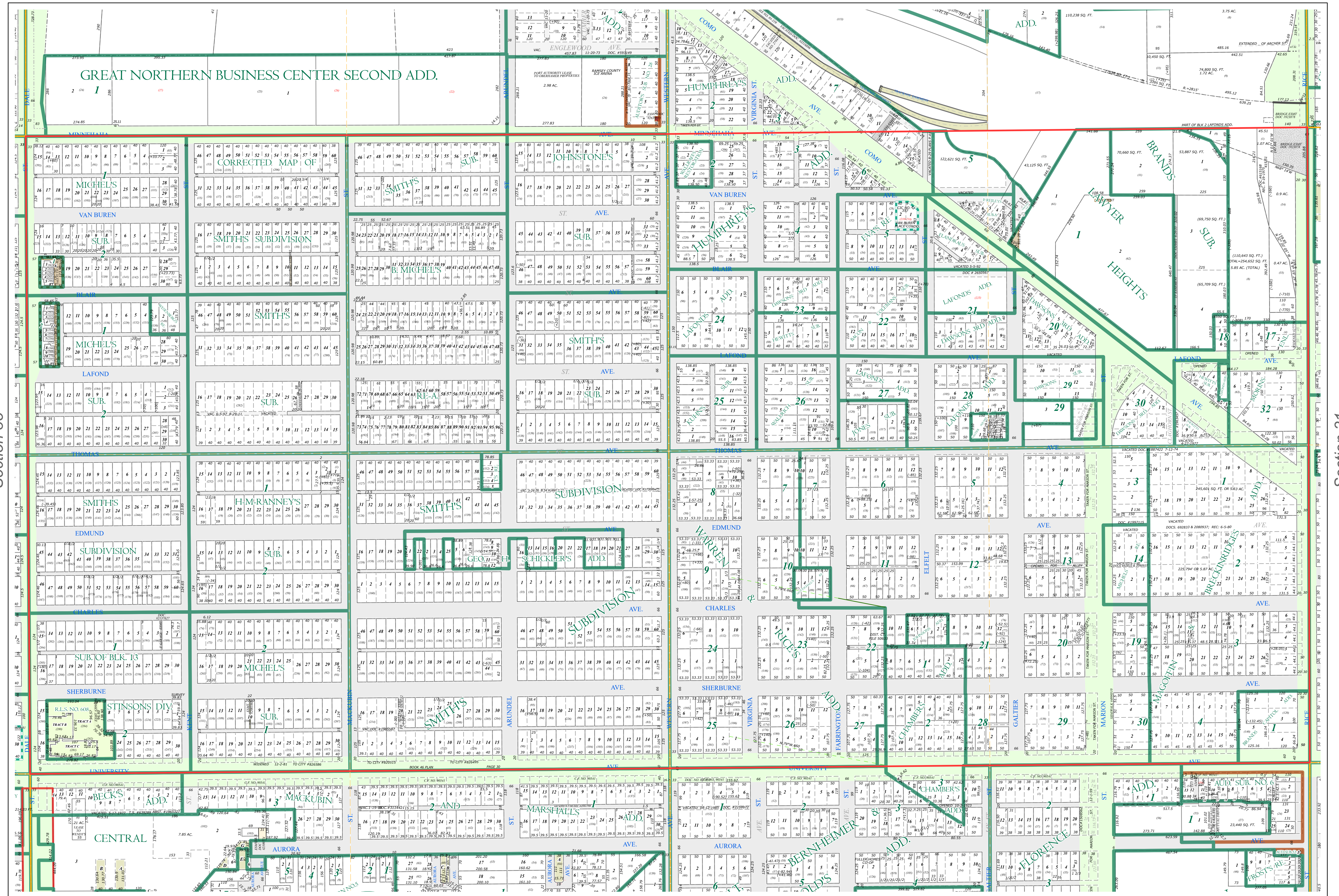
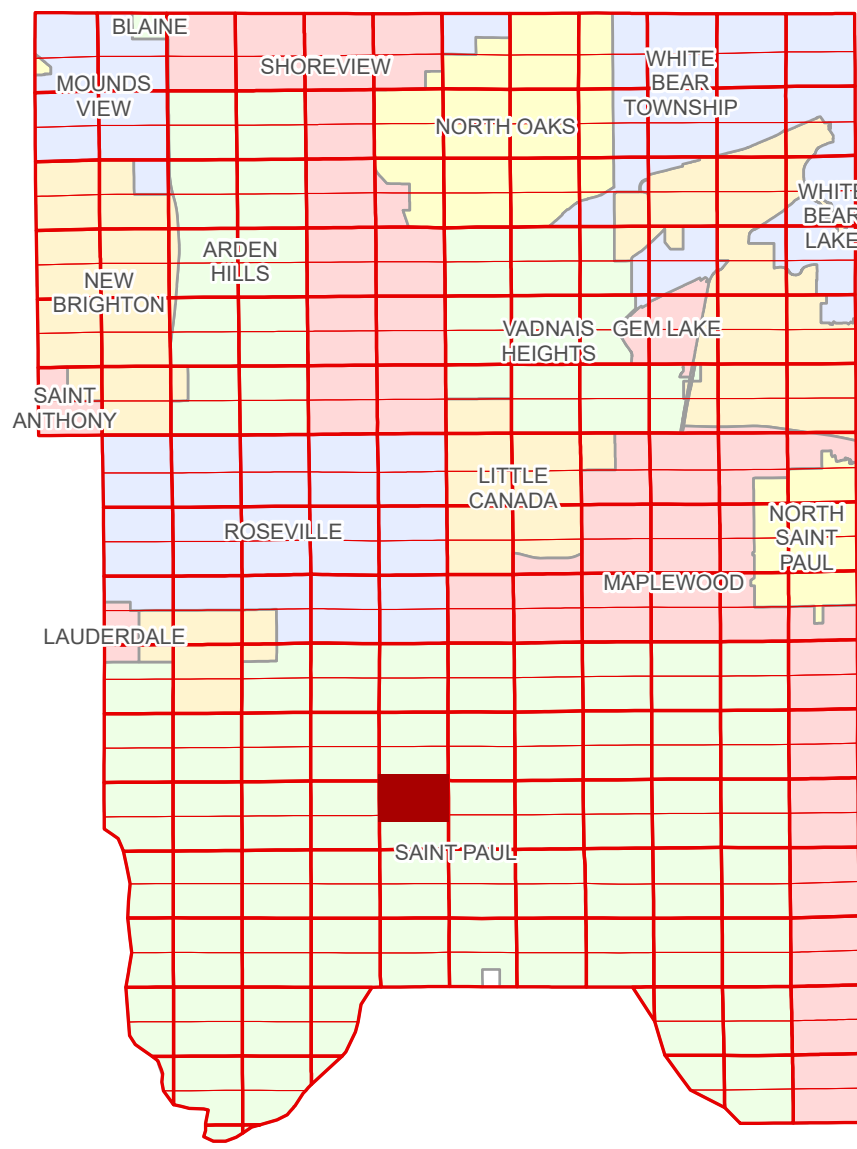


N Half
Section 36
T 29 N
R 23 W

Ramsey County Minnesota Parcel Map

Ramsey County
Section 25



Ramsey County
Section 35

Section 31
Ramsey County

Section 36
Ramsey County

- Legend**
- Section
 - Quarter
 - Quarter Quarter
 - County Right of Way
 - Municipal Right of Way
 - Subdivision Type
 - Registered Land Survey
 - Planned Community
 - Condominium
 - Division Type
 - Lot
 - Tract
 - Metes & Bounds
 - Tax Parcel Type
 - State Assessed Property
 - Real Property
 - Easement Type
 - Pedestrian
 - Private Access
 - Private Driveway
 - Utility, Unidentified
 - Misc Easements

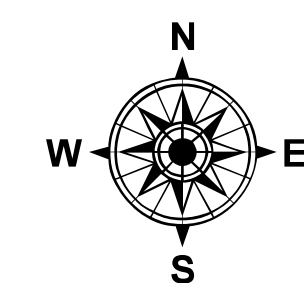
The information on this map is a compilation of Ramsey County Records. THE COUNTY DOES NOT WARRANT OR GUARANTEE THE ACCURACY OF THIS DATA. The County disclaims any liability for any injuries, time delays, or expenses you may suffer if you rely in any manner on the accuracy of this data.

NOTE: This is not an official Ramsey County tax lot map. This is based on the data available in the Geographic Information System, which may vary from tax data officially recorded in the Tax System. For an official tax map, please contact the Office of Property Records and Revenue.

Produced by Information Services Enterprise GIS Division
RCGISMetaData@Co.Ramsey.MN.US

651-266-2000
AskPropertyTaxandRecords@co.ramsey.mn.us

RAMSEY COUNTY



0 4590 180 270 360 Feet

1" = 200'
1:2,400

N362923

1/3/2025