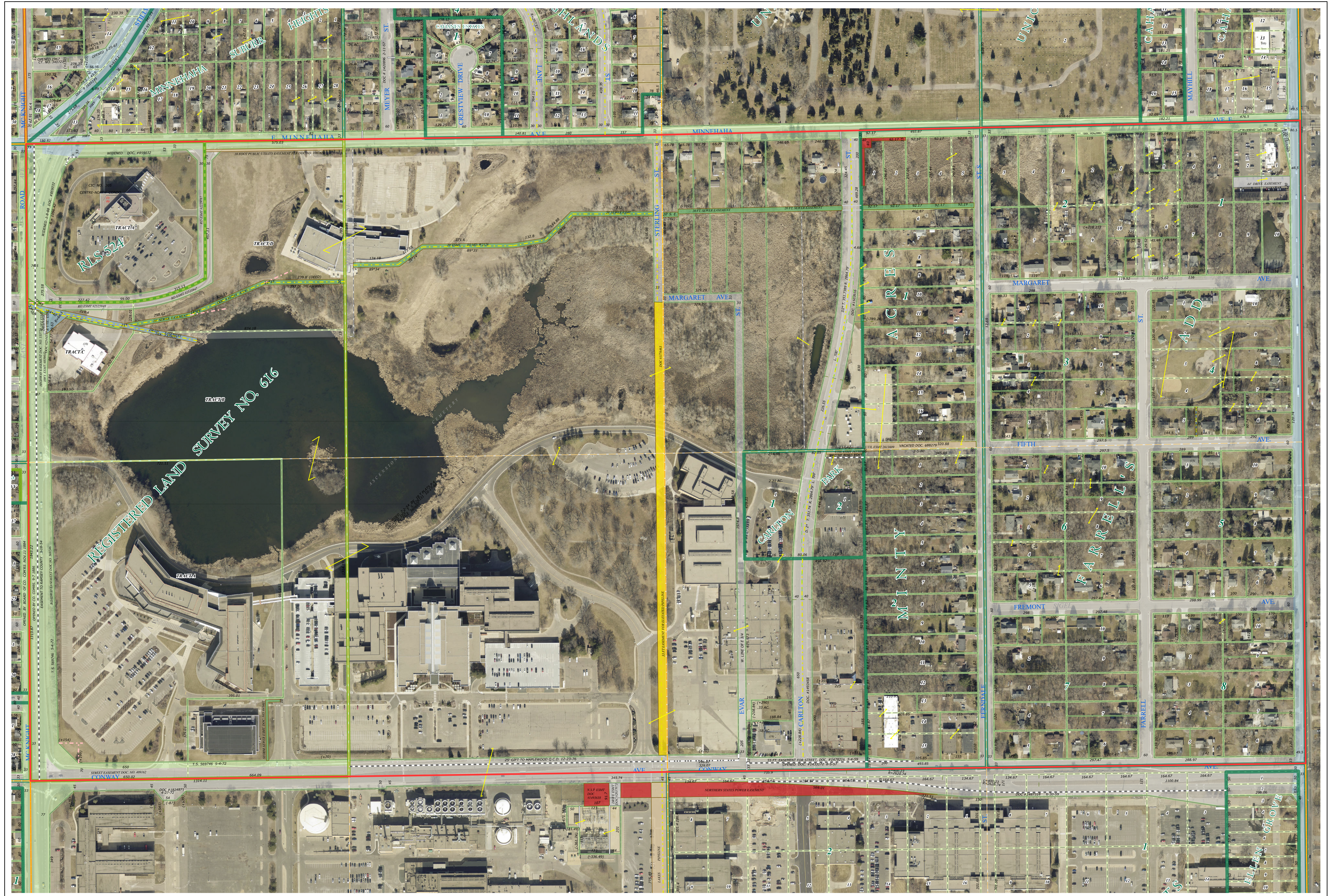
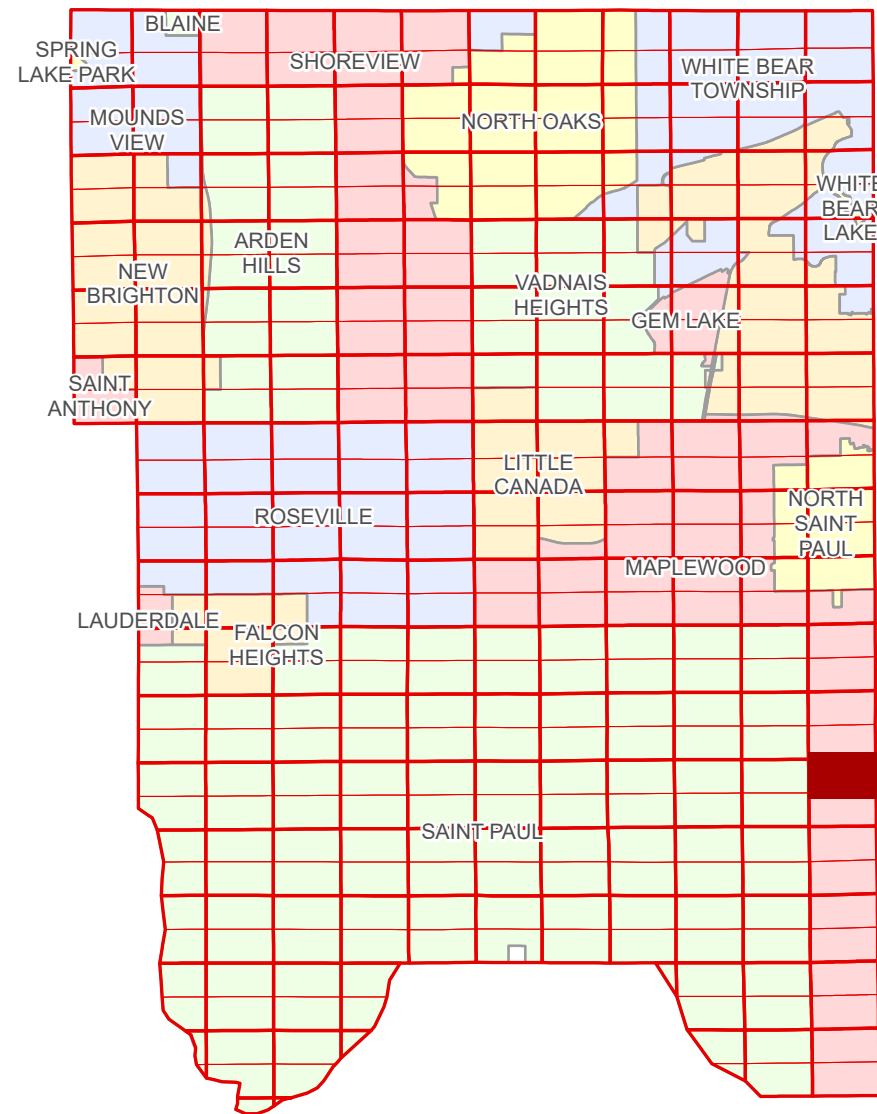


Ramsey County Minnesota Parcel Map

Ramsey County
Section 25

N Half
Section 36
T 29 N
R 22 W



Ramsey County
Section 35

Section 31
Washington County

Legend			
	Section		Metes & Bounds
	Quarter		Tax Parcel Type Real Property
	Quarter Quarter		Easement Type
	State Right of Way		Private Driveway
	County Right of Way		Utility, Electric
	Municipal Right of Way		Utility, Gas & Oil
	Subdivision Type		Utility, Storm & Sanitary Sewer
	Subdivision Plat		Utility, Unidentified
	Registered Land Survey		Drainage
	Condominium		Misc Easements
	Division Type		
	Lot		

The information on this map is a compilation of Ramsey County Records. THE COUNTY DOES NOT WARRANT OR GUARANTEE THE ACCURACY OF THIS DATA. THE County disclaims any liability for any injuries, time delays, or expenses you may suffer if you rely in any manner on the accuracy of this data.

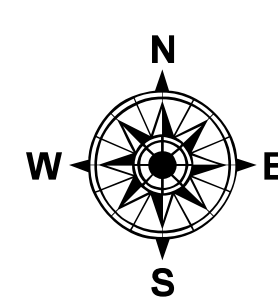
NOTE: This is not an official Ramsey County tax lot map. This is based on the data available in the Geographic Information System, which may vary from tax data officially recorded in the Tax System. For an official tax map, please contact the Office of Property Records and Revenue.

Produced by Information Services Enterprise GIS Division
RCGISMetaData@Co.Ramsey.MN.US

651-266-2000
AskPropertyTaxandRecords@co.ramsey.mn.us

Section 36
Ramsey County

Aerial Imagery Date: March 11 - April 4, 2024



0 4590 180 270 360
Feet

1" = 200'

1:2,400

N362922

1/3/2025