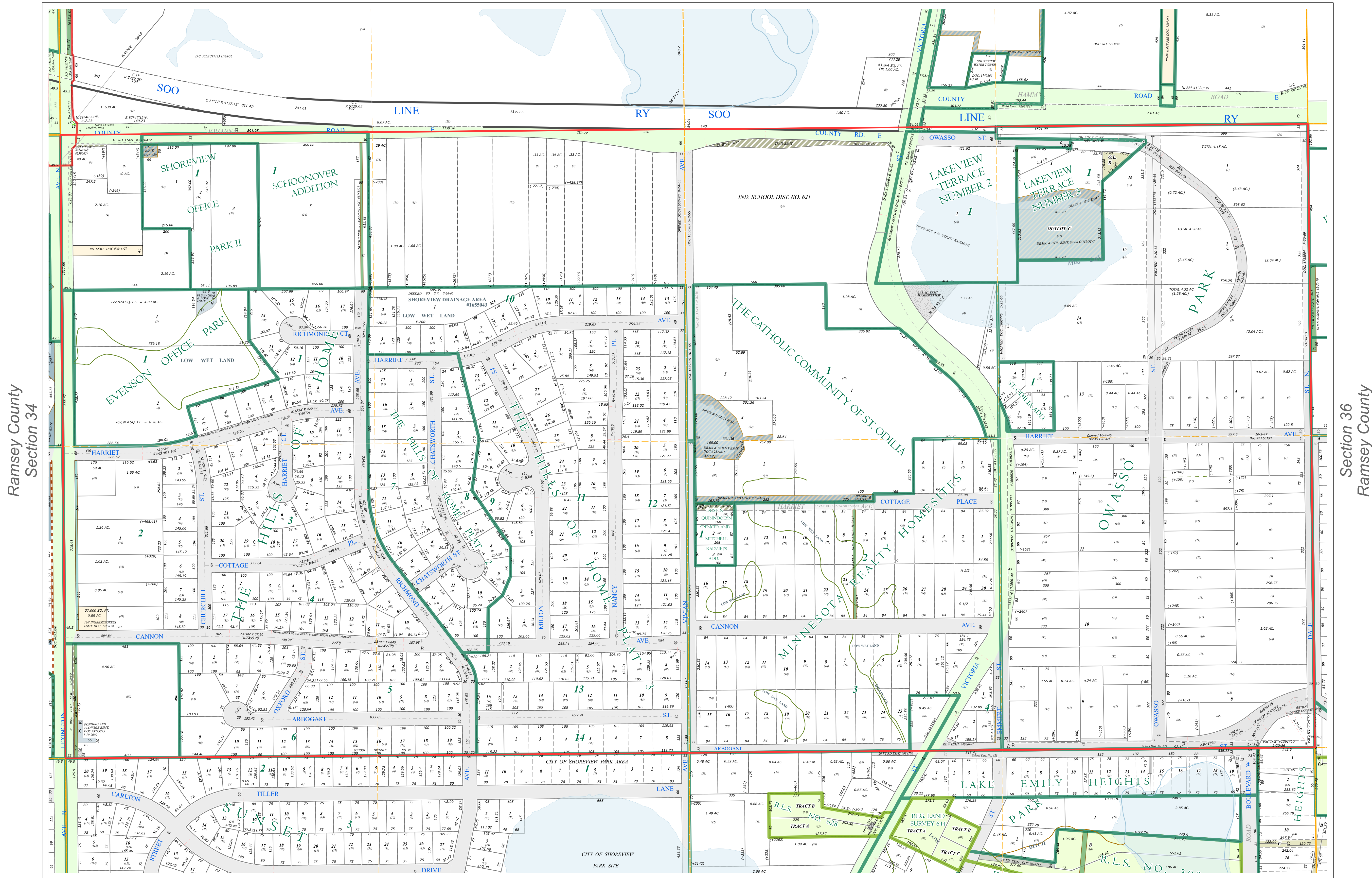
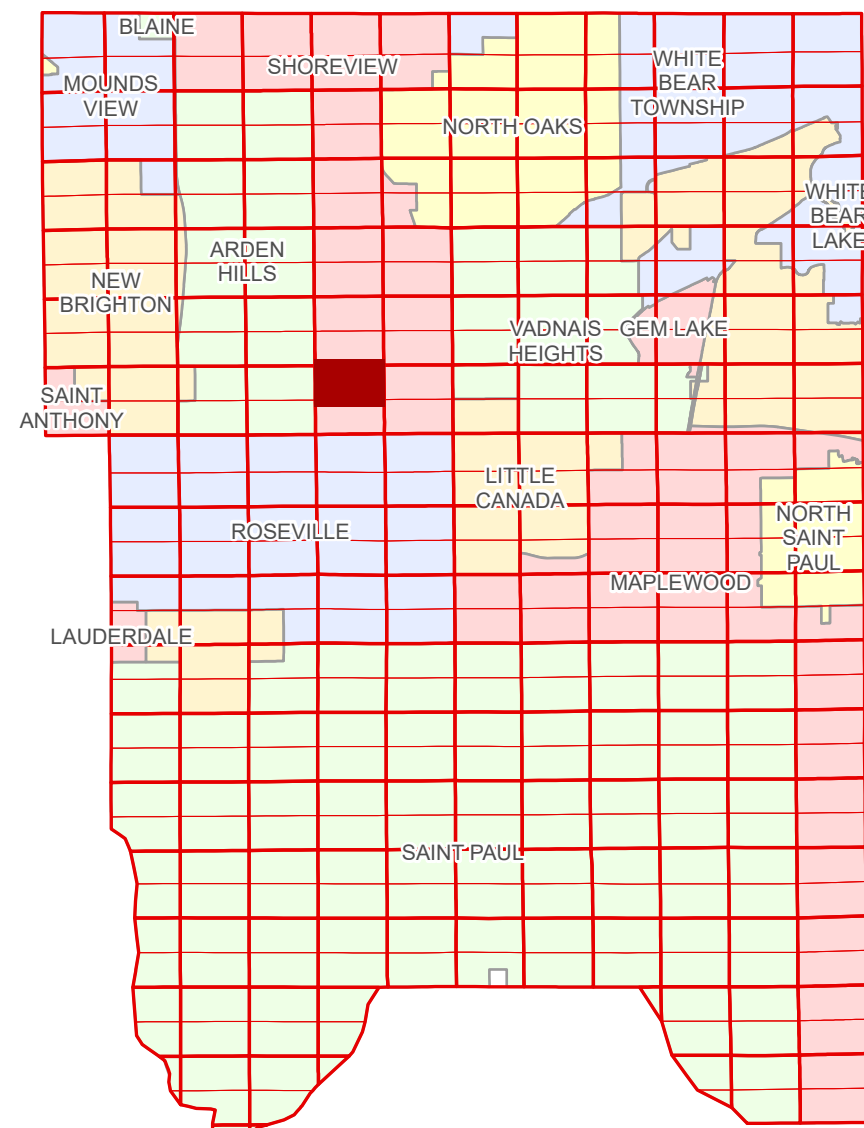


N Half
Section 35
T 30 N
R 23 W

Ramsey County Minnesota Parcel Map

Ramsey County
Section 26



Ramsey County
Section 34

Section 36
Ramsey County

Legend

Section	Tax Parcel Type
Quarter	State Assessed Property
Quarter Quarter	Real Property
County Right of Way	Easement Type
Municipal Right of Way	Ponding
Subdivision Type	Pedestrian
Subdivision Plat	Private Access
Highway RoW Plat	Utility, Storm & Sanitary Sewer
Division Type	Utility, Water
Lot	Drainage & Utility
Outlot	Misc Easements
Metes & Bounds	

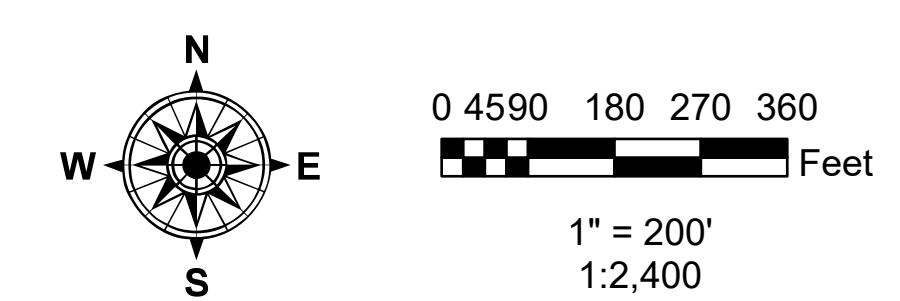
The information on this map is a compilation of Ramsey County Records. THE COUNTY DOES NOT WARRANT OR GUARANTEE THE ACCURACY OF THIS DATA. The County disclaims any liability for any injuries, time delays, or expenses you may suffer if you rely in any manner on the accuracy of this data.

Produced by Information Services Enterprise GIS Division
RCGISMetaData@Co.Ramsey.MN.US

NOTE: This is not an official Ramsey County tax lot map. This is based on the data available in the Geographic Information System, which may vary from tax data officially recorded in the Tax System. For an official tax map, please contact the Office of Property Records and Revenue.

651-266-2000
AskPropertyTaxandRecords@co.ramsey.mn.us

Section 35
Ramsey County



N353023
1/3/2025