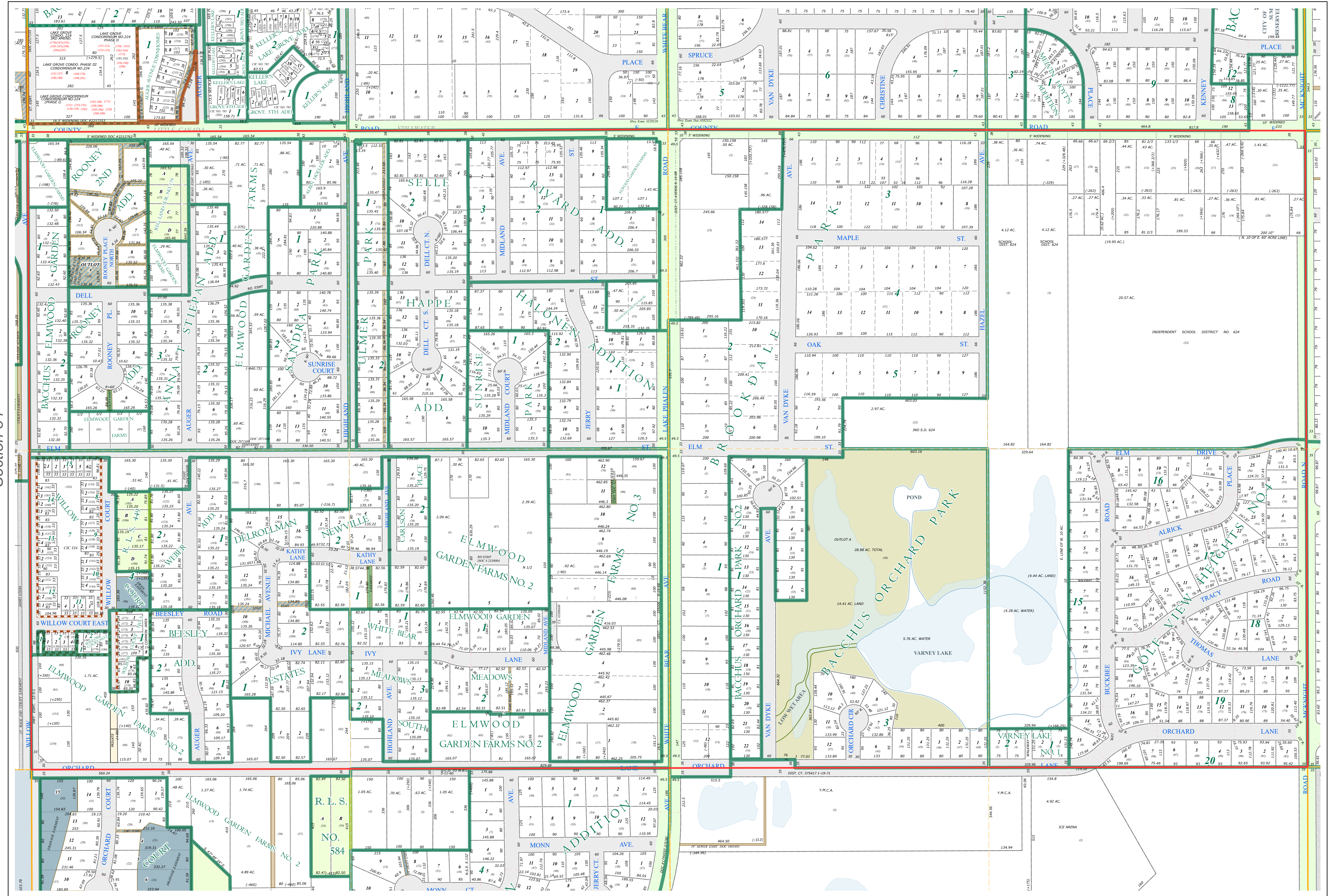
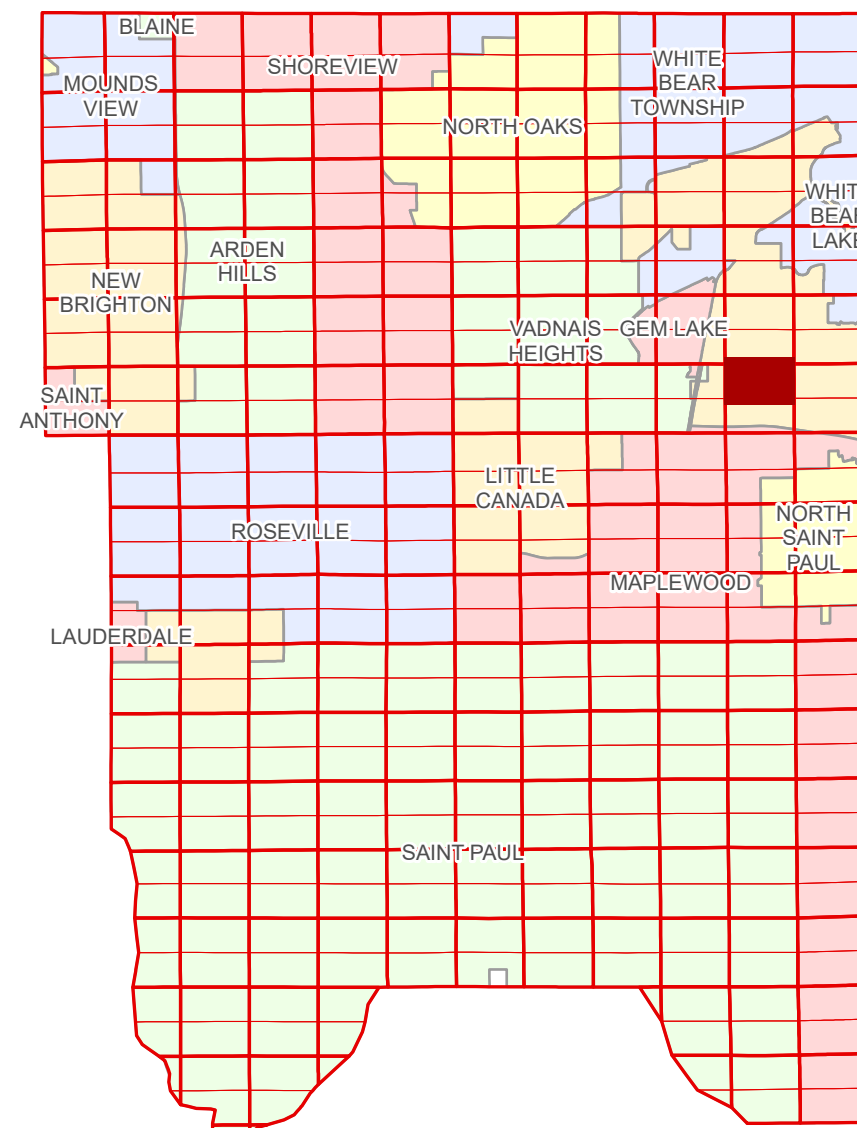


N Half
Section 35
T 30 N
R 22 W

Ramsey County Minnesota Parcel Map

Ramsey County
Section 26



Ramsey County
Section 34

Section 36
Ramsey County

Legend

Section	Division Type
Quarter	Lot
Quarter Quarter	Outlot
County Right of Way	Tract
Municipal Right of Way	Metes & Bounds
Subdivision Type	Tax Parcel Type
Subdivision Plat	Real Property
Registered Land Survey	Easement Type
Planned Community	Private Access
	Utility, Storm & Sanitary Sewer
	Drainage & Utility
	Drainage

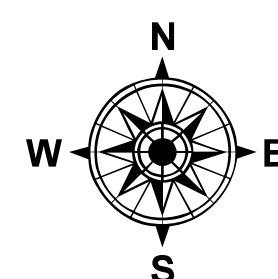
The information on this map is a compilation of Ramsey County Records. THE COUNTY DOES NOT WARRANT OR GUARANTEE THE ACCURACY OF THIS DATA. The County disclaims any liability for any injuries, time delays, or expenses you may suffer if you rely in any manner on the accuracy of this data.

Produced by Information Services Enterprise GIS Division
RCGSMetaData@Co.Ramsey.MN.US

NOTE: This is not an official Ramsey County tax lot map. This is based on the data available in the Geographic Information System, which may vary from tax data officially recorded in the Tax System. For an official tax map, please contact the Office of Property Records and Revenue.

651-266-2000
AskPropertyTaxandRecords@co.ramsey.mn.us

Section 35
Ramsey County



0 4590 180 270 360
Feet

1" = 200'
1:2400

N353022

1/3/2025

