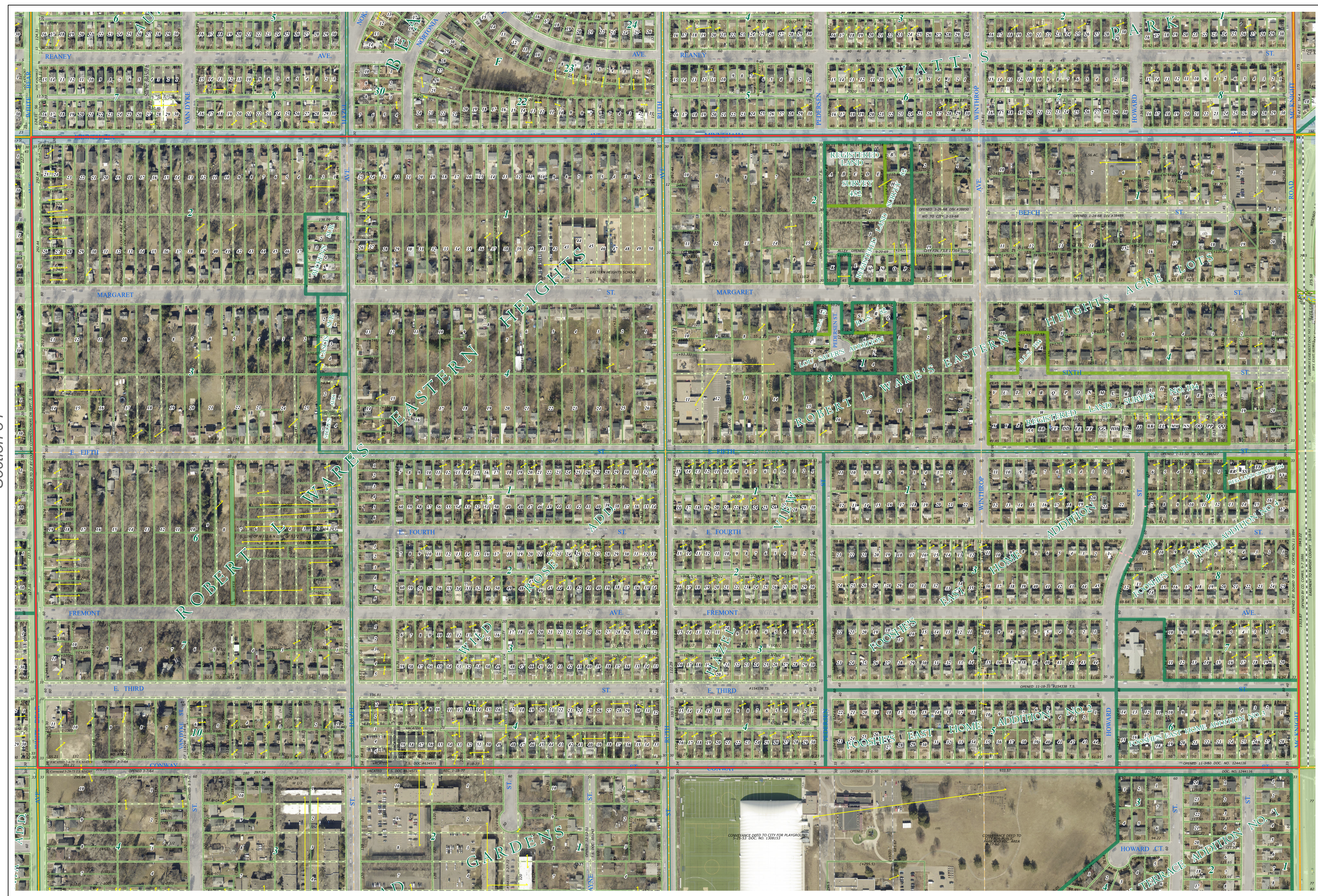
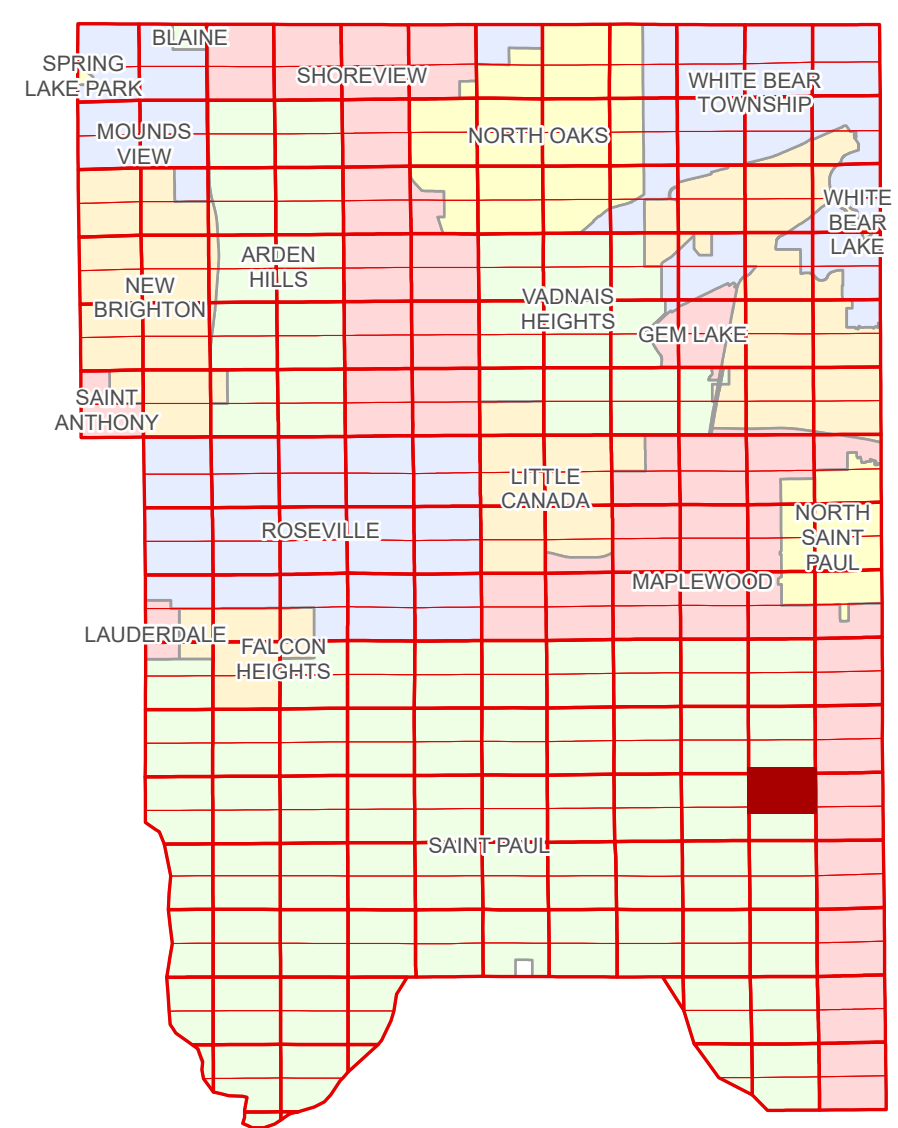


# Ramsey County Minnesota Parcel Map

N Half  
Section 35  
T 29 N  
R 22 W

Ramsey County  
Section 26



Ramsey County  
Section 34

Section 36  
Ramsey County

Legend	
	Section
	Quarter
	Quarter Quarter
	State Right of Way
	County Right of Way
	Municipal Right of Way
	Subdivision Type
	Registered Land Survey
	Condominium
	Division Type
	Metes & Bounds
	Tax Parcel Type
	Real Property
	Easement Type
	Private Driveway
	Public Right of Way
	Utility, Storm & Sanitary Sewer

Aerial Imagery Date: March 11 - April 4, 2024



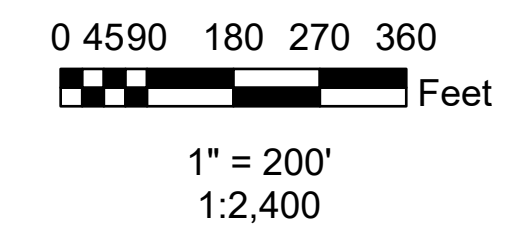
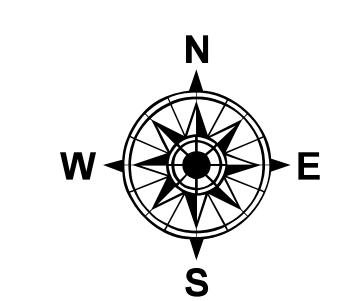
The information on this map is a compilation of Ramsey County Records. THE COUNTY DOES NOT WARRANT OR GUARANTEE THE ACCURACY OF THIS DATA. The County disclaims any liability for any injuries, time delays, or expenses you may suffer if you rely in any manner on the accuracy of this data.

Produced by Information Services Enterprise GIS Division  
RCGISMetaData@Co.Ramsey.MN.US

NOTE: This is not an official Ramsey County tax lot map. This is based on the data available in the Geographic Information System, which may vary from tax data officially recorded in the Tax System. For an official tax map, please contact the Office of Property Records and Revenue.

651-266-2000  
AskPropertyTaxandRecords@co.ramsey.mn.us

Section 35  
Ramsey County



N352922  
1/3/2025