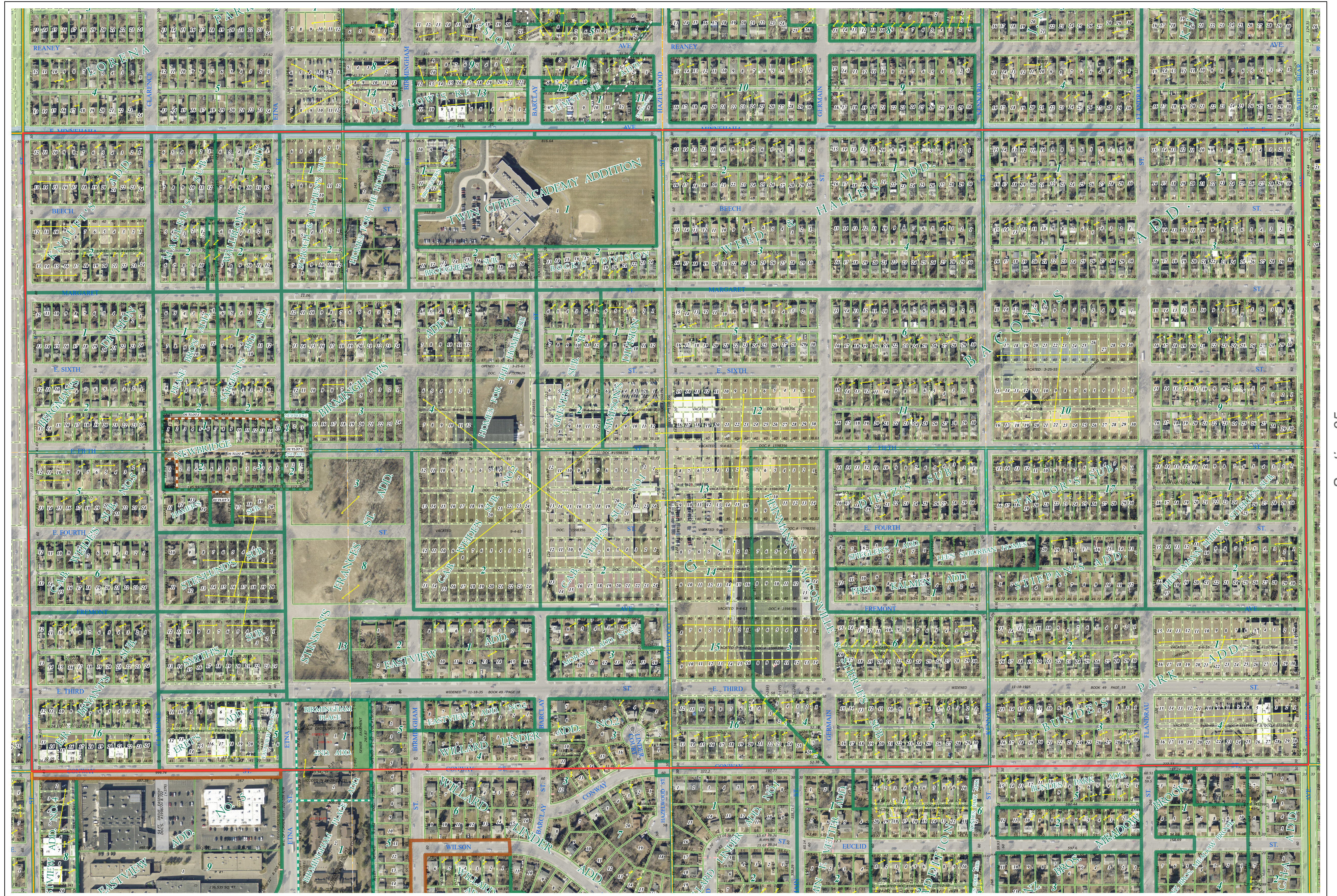
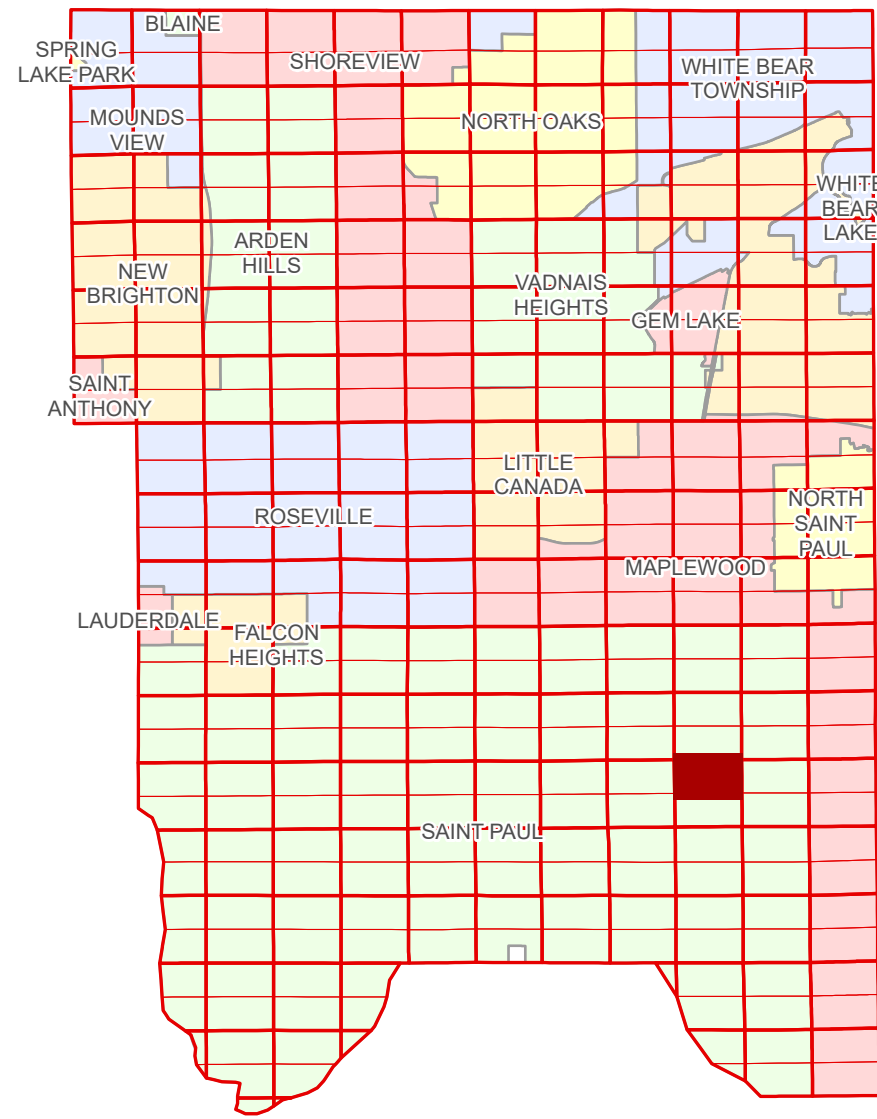


Ramsey County Minnesota Parcel Map

N Half
Section 34
T 29 N
R 22 W

Ramsey County
Section 27



Ramsey County
Section 33

Section 35
Ramsey County

Legend

- | | |
|-------------------------|---------------------------------|
| Section | Planned Community |
| Quarter | Condominium |
| Quarter Quarter | Division Type |
| State Right of Way | Lot |
| County Right of Way | Tax Parcel Type |
| Municipal Right of Way | Real Property |
| Subdivision Type | Easement Type |
| Subdivision Plat | Utility, Storm & Sanitary Sewer |
| Auditors's Subdivision | |

Aerial Imagery Date: March 11 - April 4, 2024

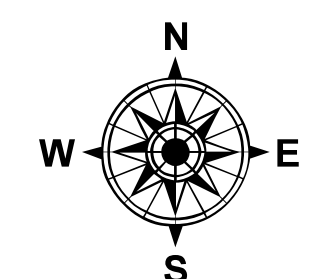
The information on this map is a compilation of Ramsey County Records. THE COUNTY DOES NOT WARRANT OR GUARANTEE THE ACCURACY OF THIS DATA. The County disclaims any liability for any injuries, time delays, or expenses you may suffer if you rely in any manner on the accuracy of this data.

NOTE: This is not an official Ramsey County tax lot map. This is based on the data available in the Geographic Information System, which may vary from tax data officially recorded in the Tax System. For an official tax map, please contact the Office of Property Records and Revenue.

Produced by Information Services Enterprise GIS Division
RCGSMetaData@Co.Ramsey.MN.US

651-266-2000
AskPropertyTaxandRecords@co.ramsey.mn.us

Section 34
Ramsey County



0 4590 180 270 360 Feet
1" = 200'
1:2,400

N342922

1/3/2025