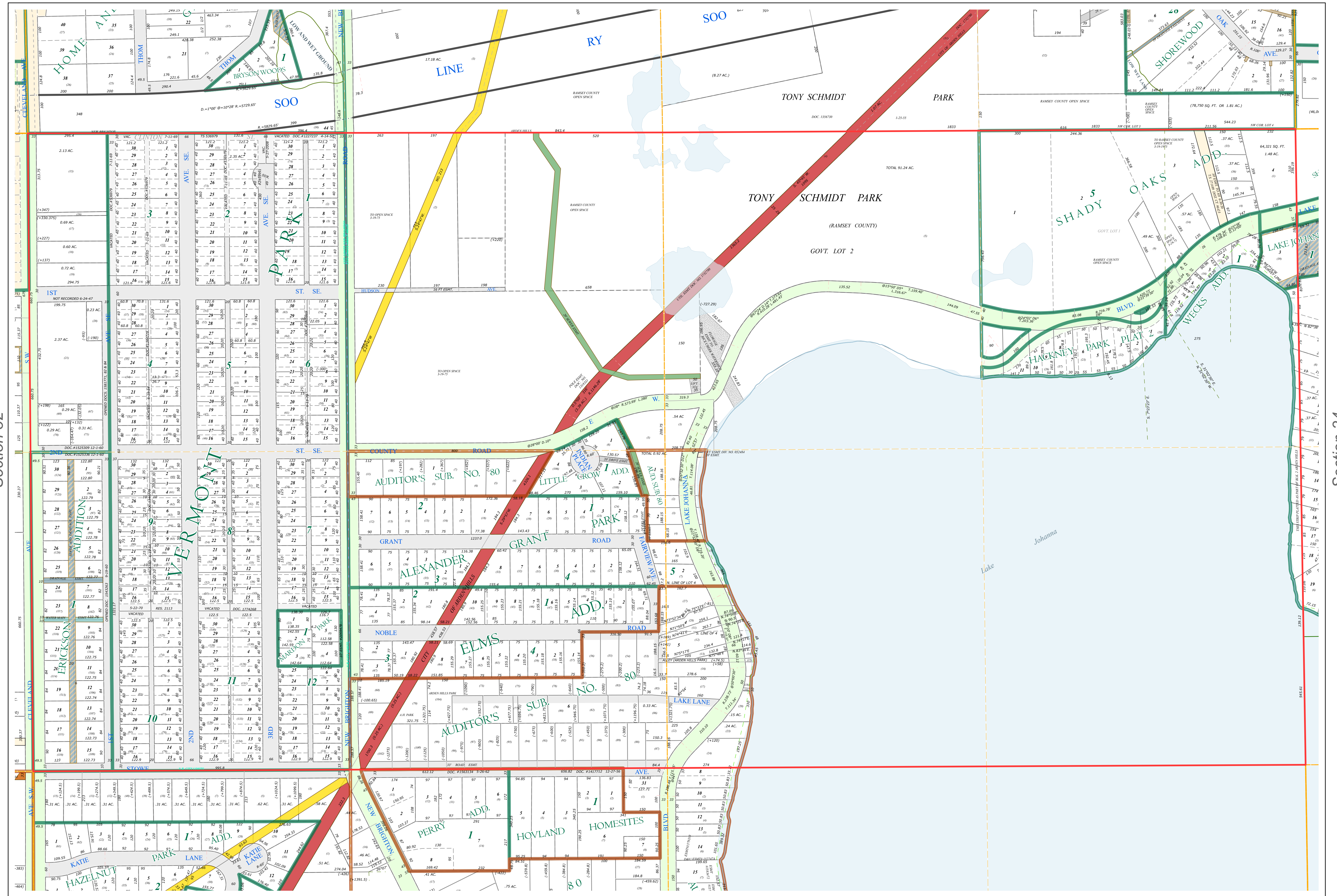
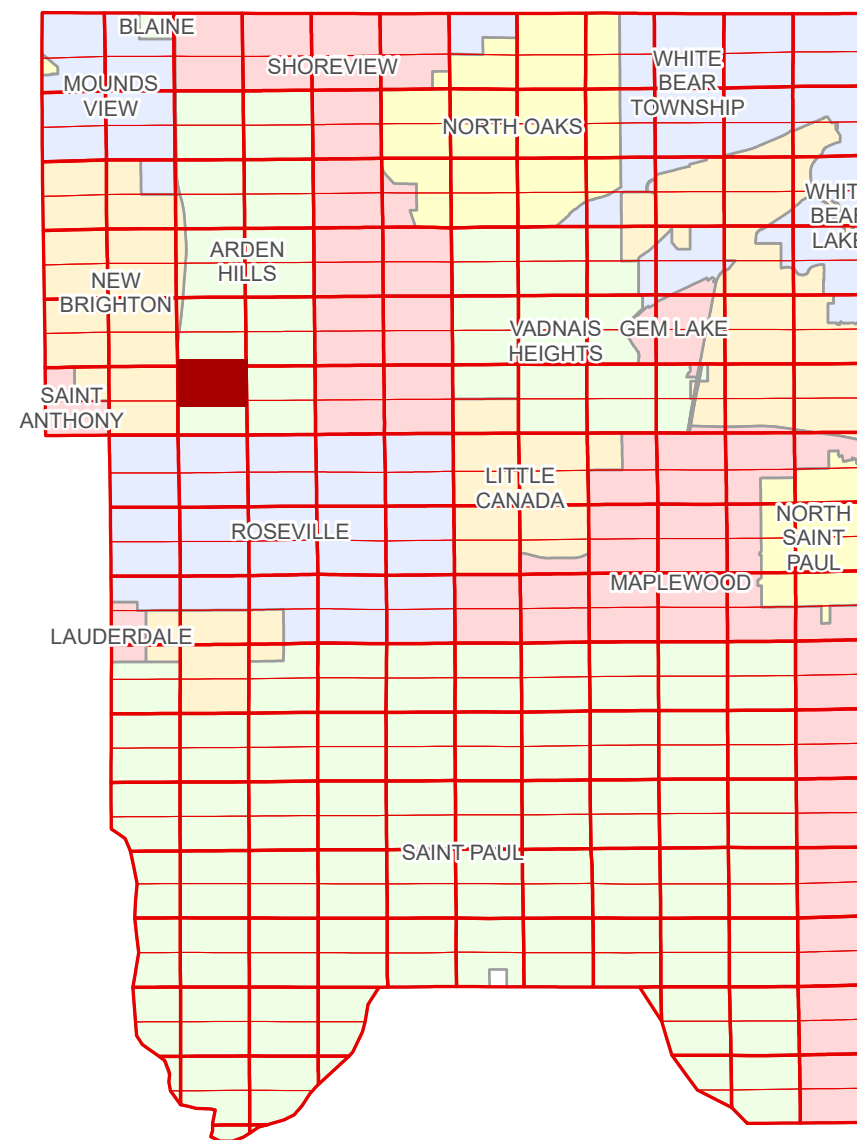


N Half
Section 33
T 30 N
R 23 W

Ramsey County Minnesota Parcel Map

Ramsey County
Section 28



Ramsey County
Section 32

Section 34
Ramsey County

Legend

Section	Tax Parcel Type
Quarter	State Assessed Property
Quarter Quarter	Real Property
County Right of Way	Easement Type
Municipal Right of Way	Private Access
Subdivision Type	Private Driveway
Subdivision Plat	Utility, Electric
Auditors's Subdivision	Utility, Gas & Oil
Division Type	Utility, Storm & Sanitary Sewer
Lot	Utility, Water
Metes & Bounds	Drainage & Utility
	Drainage
	Misc Easements

The information on this map is a compilation of Ramsey County Records. THE COUNTY DOES NOT WARRANT OR GUARANTEE THE ACCURACY OF THIS DATA. THE County disclaims any liability for any injuries, time delays, or expenses you may suffer if you rely in any manner on the accuracy of this data.

Produced by Information Services Enterprise GIS Division
RCGISMetaData@Co.Ramsey.MN.US

NOTE: This is not an official Ramsey County tax lot map. This is based on the data available in the Geographic Information System, which may vary from tax data officially recorded in the Tax System. For an official tax map, please contact the Office of Property Records and Revenue.

651-266-2000
AskPropertyTaxandRecords@co.ramsey.mn.us

Section 33
Ramsey County

0 4590 180 270 360 Feet
1" = 200'
1:2,400

N333023
1/3/2025