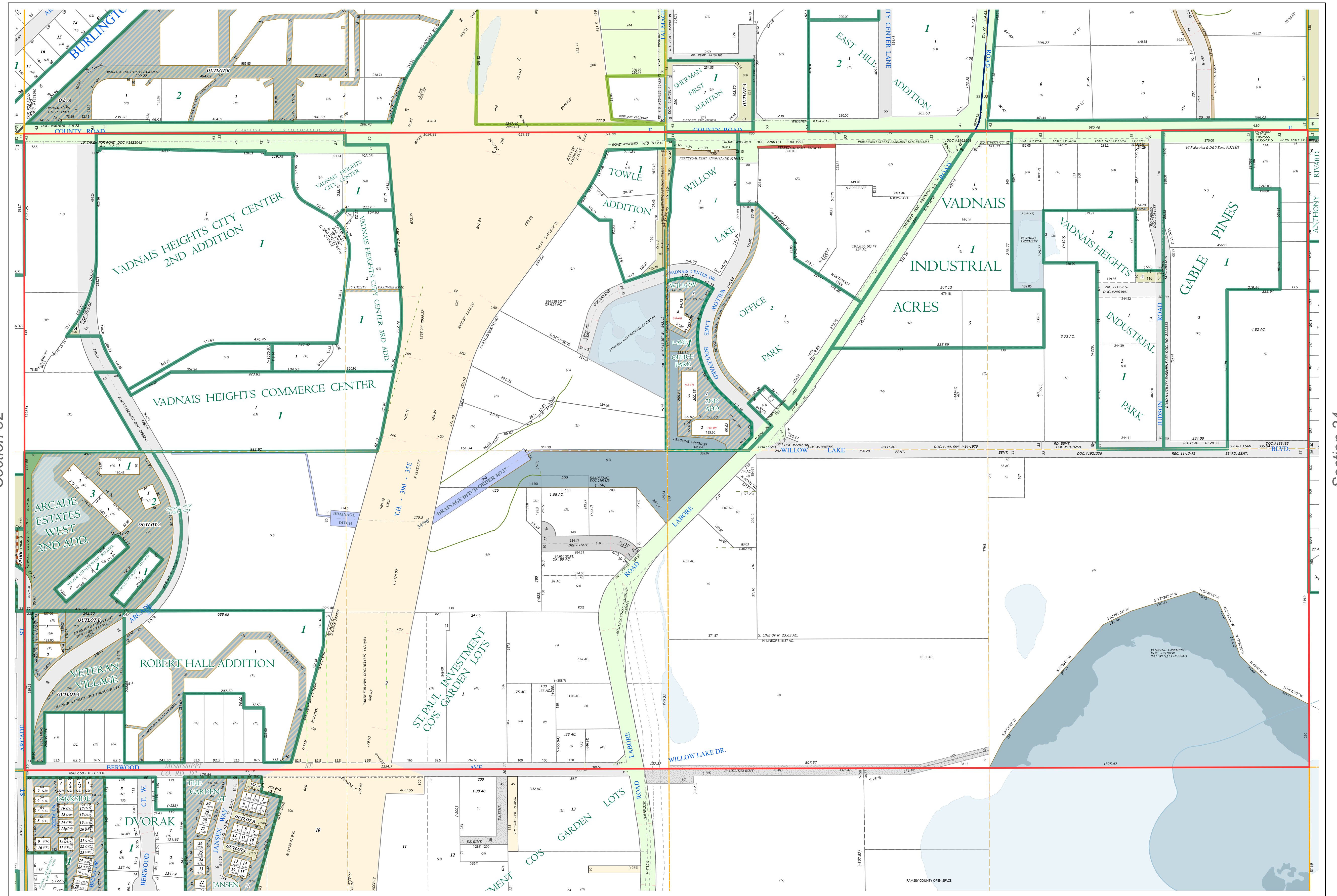
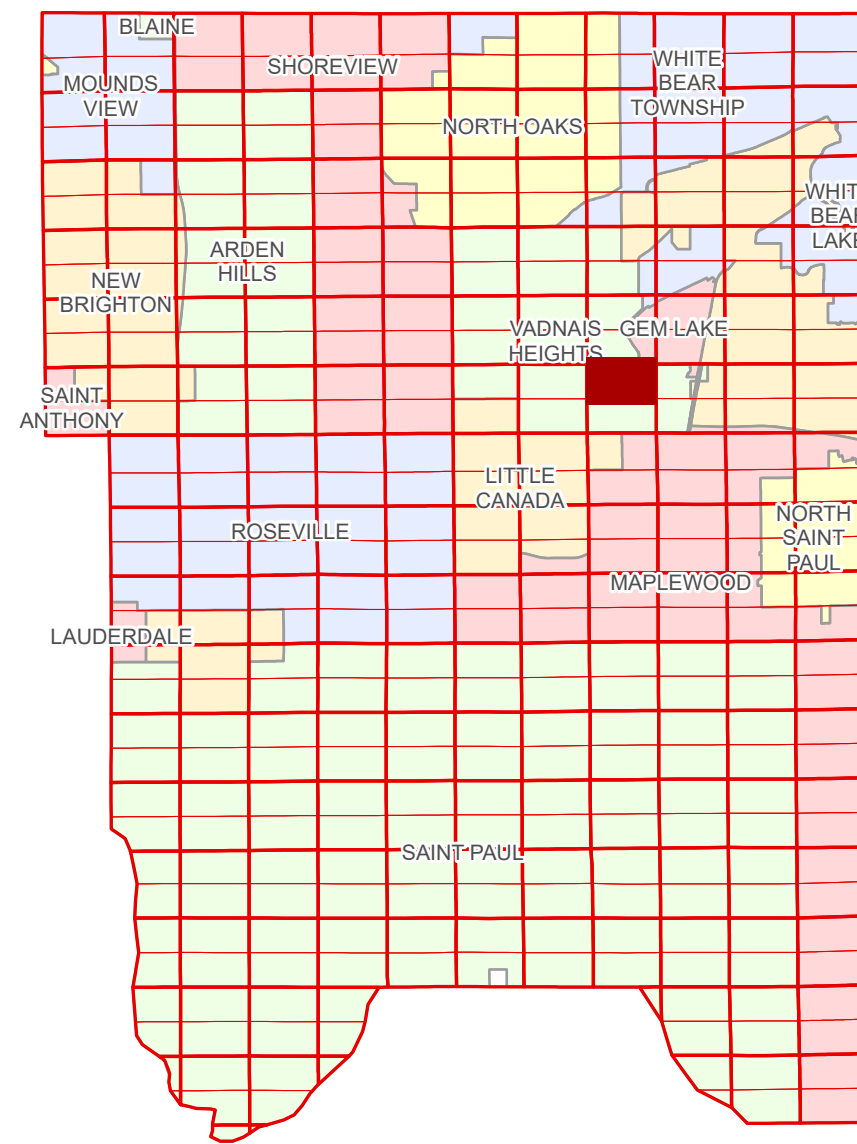


N Half
Section 33
T 30 N
R 22 W

Ramsey County Minnesota Parcel Map

Ramsey County
Section 28



Ramsey County
Section 32

Section 34
Ramsey County

Legend	
	Section
	Quarter
	Quarter Quarter
	Federal Right of Way
	County Right of Way
	Municipal Right of Way
	Subdivision Plat
	Condominium
	Lot
	Outlot
	Park
	Metes & Bounds
	Tax Parcel Type Personal Property
	Real Property
	Easement Type Ditch, County & Judicial
	Ponding
	Private Driveway
	Utility, Electric
	Utility, Storm & Sanitary Sewer
	Utility, Unidentified
	Drainage & Utility
	Drainage
	Misc Easements

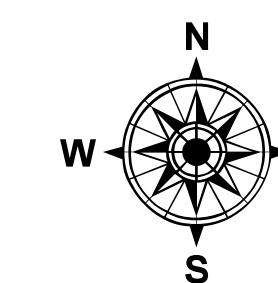
The information on this map is a compilation of Ramsey County Records. THE COUNTY DOES NOT WARRANT OR GUARANTEE THE ACCURACY OF THIS DATA. The County disclaims any liability for any injuries, time delays, or expenses you may suffer if you rely in any manner on the accuracy of this data.

Produced by Information Services Enterprise GIS Division
RCGISMetaData@Co.Ramsey.MN.US

NOTE: This is not an official Ramsey County tax lot map. This is based on the data available in the Geographic Information System, which may vary from tax data officially recorded in the Tax System. For an official tax map, please contact the Office of Property Records and Revenue.

651-266-2000
AskPropertyTaxandRecords@co.ramsey.mn.us

Section 33
Ramsey County



0 450 180 270 360 Feet
1" = 200'
1:2,400

N333022

1/3/2025