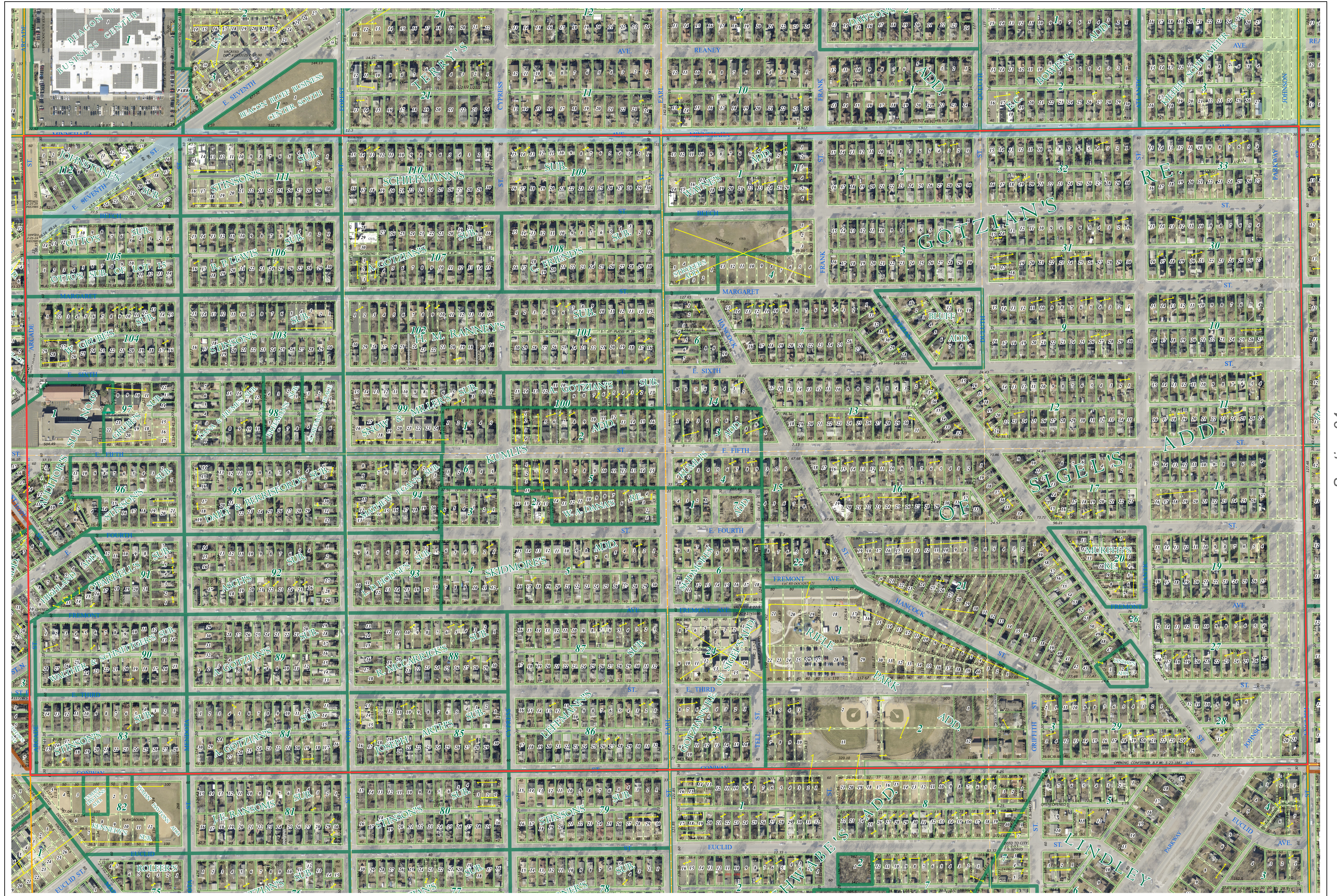
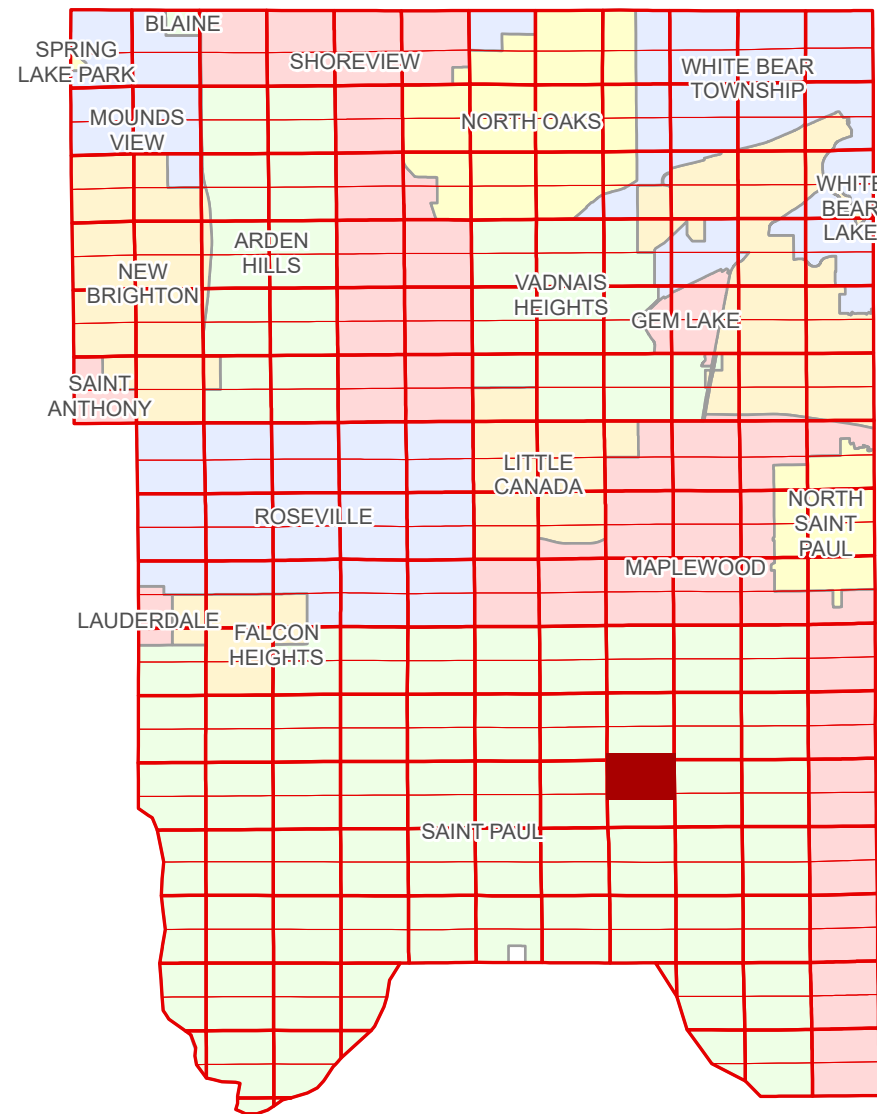


# Ramsey County Minnesota Parcel Map

N Half  
Section 33  
T 29 N  
R 22 W

Ramsey County  
Section 28



Ramsey County  
Section 32

Section 34  
Ramsey County

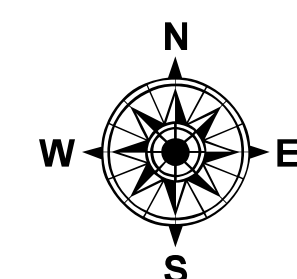
| Legend |                        |  |                   |
|--------|------------------------|--|-------------------|
|        | Section                |  | Division Type     |
|        | Quarter                |  | Lot               |
|        | Quarter Quarter        |  | Metes & Bounds    |
|        | Federal Right of Way   |  | Tax Parcel Type   |
|        | State Right of Way     |  | Personal Property |
|        | Municipal Right of Way |  | Real Property     |
|        | Subdivision Type       |  | Easement Type     |
|        | Subdivision Plat       |  | Private Driveway  |
|        | Auditor's Subdivision  |  |                   |

Aerial Imagery Date: March 11 - April 4, 2024

The information on this map is a compilation of Ramsey County Records. THE COUNTY DOES NOT WARRANT OR GUARANTEE THE ACCURACY OF THIS DATA. The County disclaims any liability for any injuries, time delays, or expenses you may suffer if you rely in any manner on the accuracy of this data.  
Produced by Information Services Enterprise GIS Division  
RCGISMetaData@Co.Ramsey.MN.US

NOTE: This is not an official Ramsey County tax lot map. This is based on the data available in the Geographic Information System, which may vary from tax data officially recorded in the Tax System. For an official tax map, please contact the Office of Property Records and Revenue.  
651-266-2000  
AskPropertyTaxandRecords@co.ramsey.mn.us

Section 33  
Ramsey County



0 4590 180 270 360 Feet  
1" = 200'  
1:2,400

N332922

1/3/2025