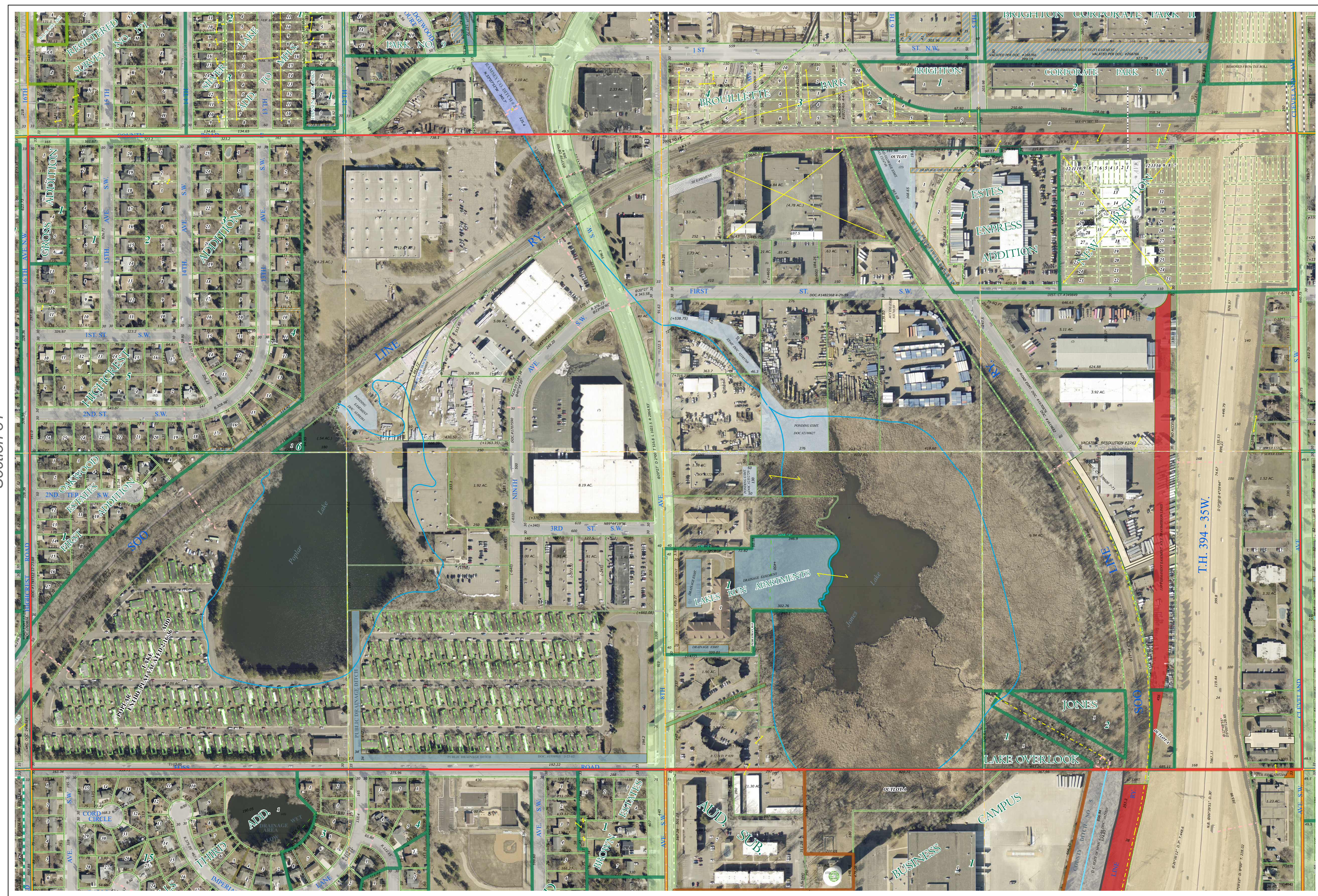
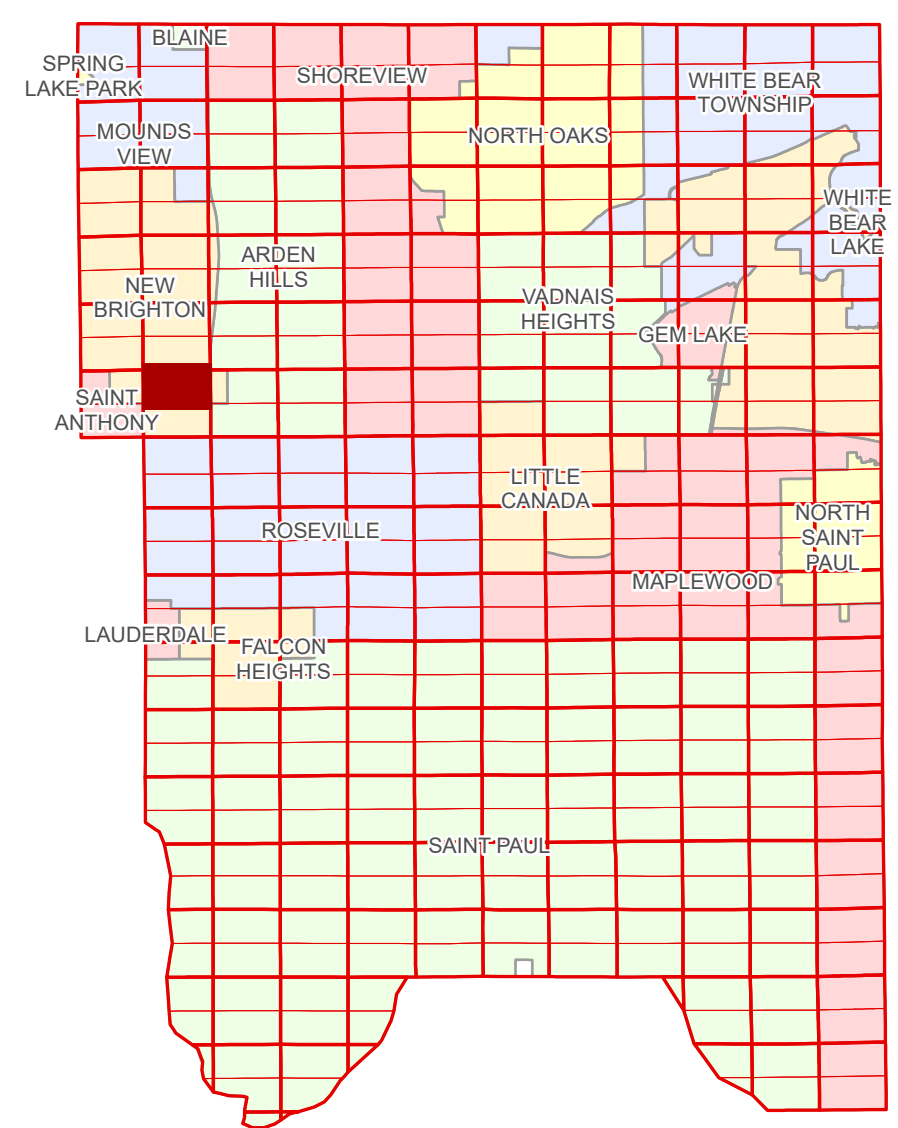


# Ramsey County Minnesota Parcel Map

Ramsey County  
Section 29

N Half  
Section 32  
T 30 N  
R 23 W



Ramsey County  
Section 31

Section 33  
Ramsey County

Legend			
	Section		Personal Property
	Quarter		State Assessed Property
	Quarter Quarter		Manufactured Home
	Federal Right of Way		Real Property
	County Right of Way		Ditch, County & Judicial
	Municipal Right of Way		Ponding
	Subdivision Plat		Private Access
	Registered Land Survey		Railroad
	Auditors's Subdivision		Utility, Electric
	Lot		Utility, Communication
	Metes & Bounds		Utility, Storm & Sanitary Sewer
			Utility, Unidentified
			Drainage & Utility
			Drainage
			Misc Easements

Aerial Imagery Date: March 11 - April 4, 2024



The information on this map is a compilation of Ramsey County Records. THE COUNTY DOES NOT WARRANT OR GUARANTEE THE ACCURACY OF THIS DATA. The County disclaims any liability for any injuries, time delays, or expenses you may suffer if you rely in any manner on the accuracy of this data.

Produced by Information Services Enterprise GIS Division  
RCGISMetaData@Co.Ramsey.MN.US

NOTE: This is not an official Ramsey County tax lot map. This is based on the data available in the Geographic Information System, which may vary from tax data officially recorded in the Tax System. For an official tax map, please contact the Office of Property Records and Revenue.

651-266-2000  
AskPropertyTaxandRecords@co.ramsey.mn.us

Section 32  
Ramsey County



N323023

1/3/2025