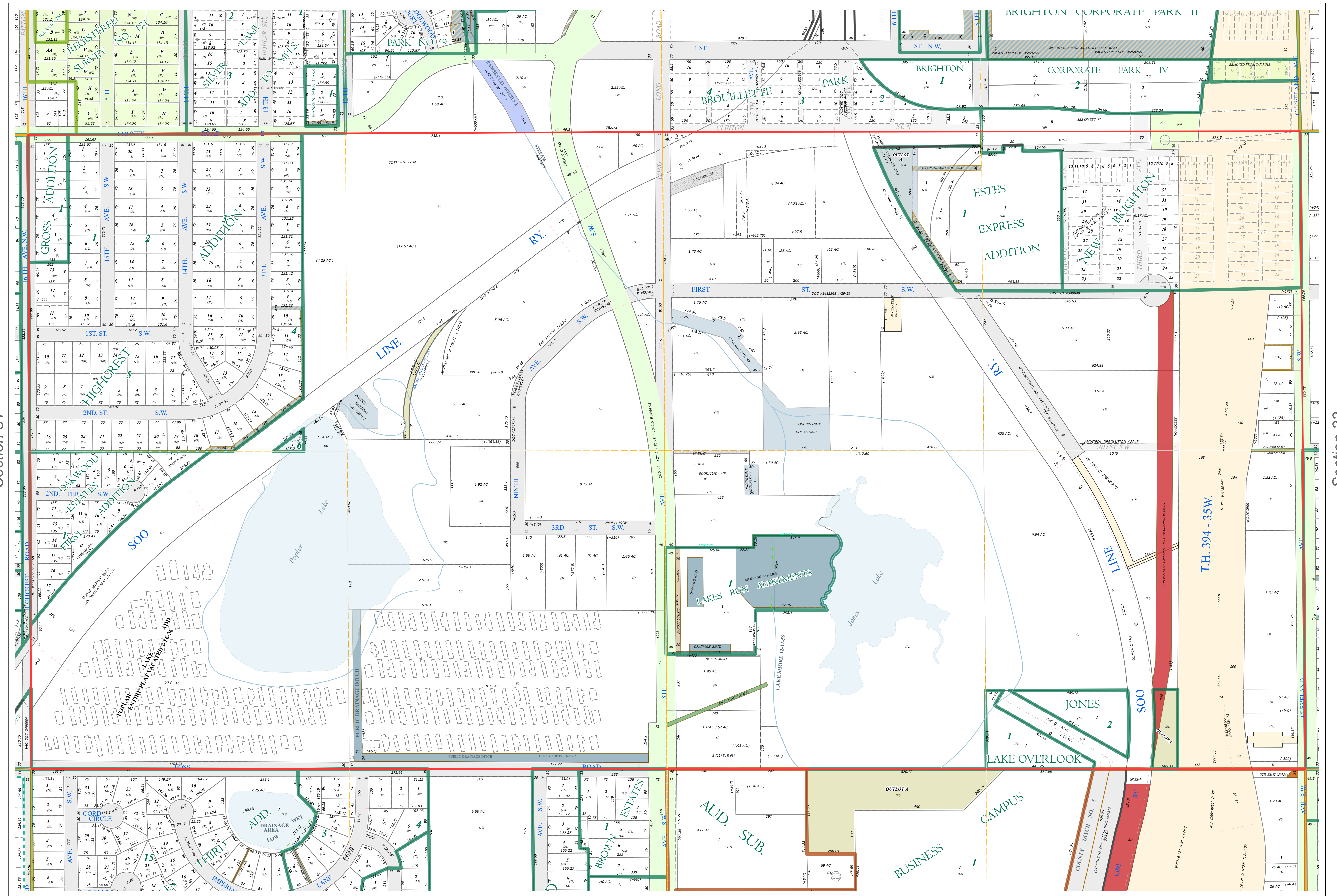
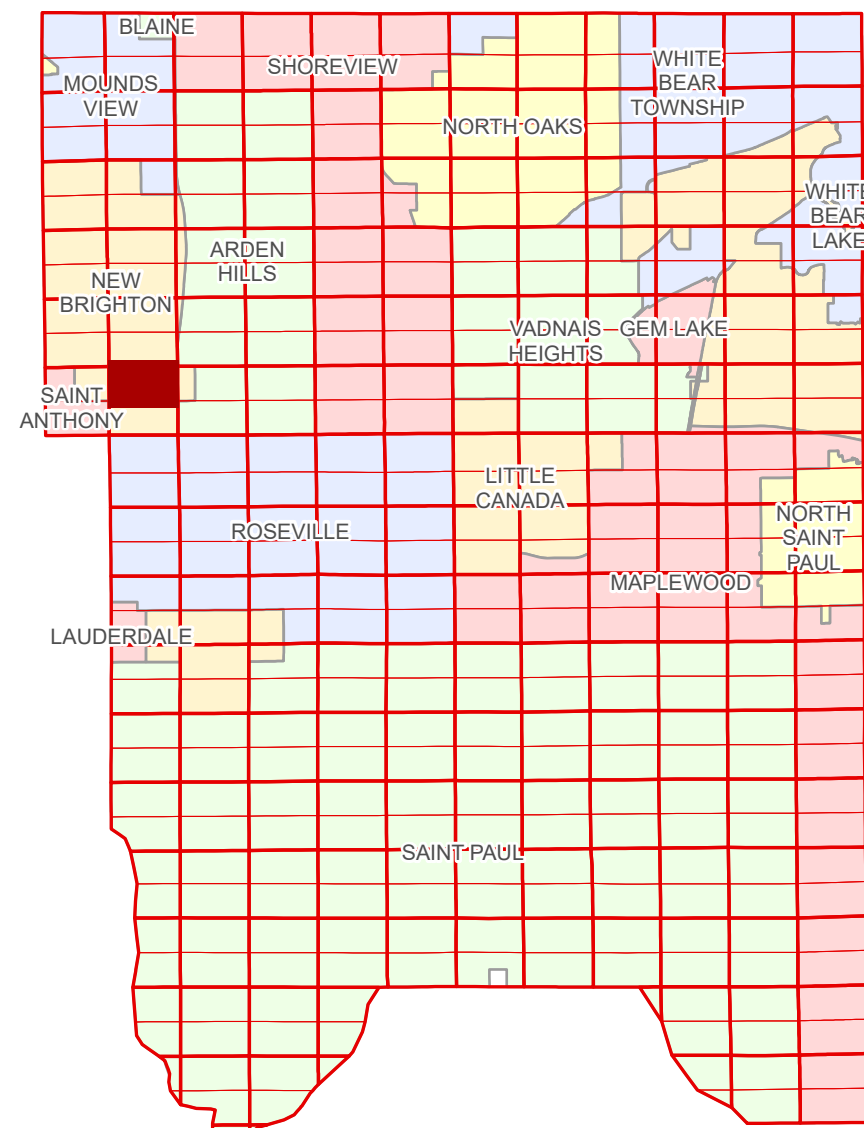


N Half
Section 32
T 30 N
R 23 W

Ramsey County Minnesota Parcel Map

Ramsey County
Section 29



Ramsey County
Section 31

Section 33
Ramsey County

Legend

Section	Tax Parcel Type
Quarter	Personal Property
Quarter Quarter	State Assessed Property
Federal Right of Way	Manufactured Home
County Right of Way	Real Property
Municipal Right of Way	Easement Type
Subdivision Type	Ditch, County & Judicial
Subdivision Plat	Ponding
Registered Land Survey	Private Access
Auditors' Subdivision	Railroad
Division Type	Utility, Electric
Lot	Utility, Communication
Outlot	Utility, Storm & Sanitary Sewer
Tract	Utility, Unidentified
Metes & Bounds	Drainage & Utility
	Drainage
	Misc Easements

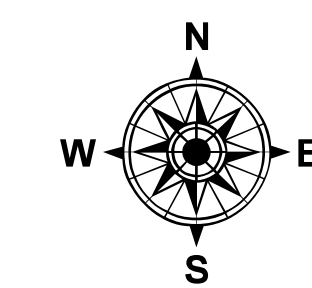
The information on this map is a compilation of Ramsey County Records. THE COUNTY DOES NOT WARRANT OR GUARANTEE THE ACCURACY OF THIS DATA. The County disclaims any liability for any injuries, time delays, or expenses you may suffer if you rely in any manner on the accuracy of this data.

Produced by Information Services Enterprise GIS Division
RCGSMetaData@Co.Ramsey.MN.US

NOTE: This is not an official Ramsey County tax lot map. This is based on the data available in the Geographic Information System, which may vary from tax data officially recorded in the Tax System. For an official tax map, please contact the Office of Property Records and Revenue.

651-266-2000
AskPropertyTaxandRecords@co.ramsey.mn.us

Section 32
Ramsey County



0 450 180 270 360
Feet

1" = 200'

1:2,400

N323023

1/3/2025

