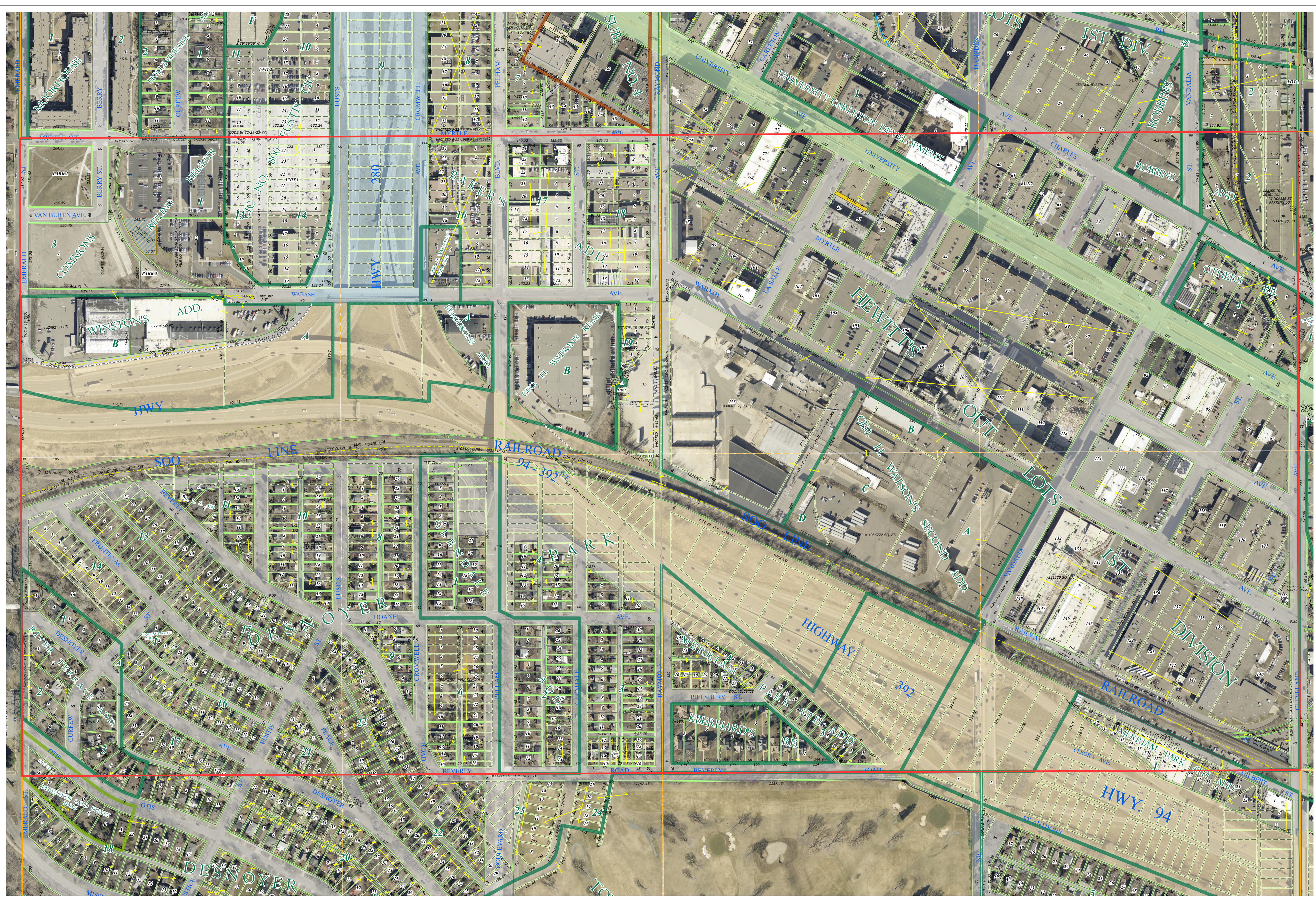
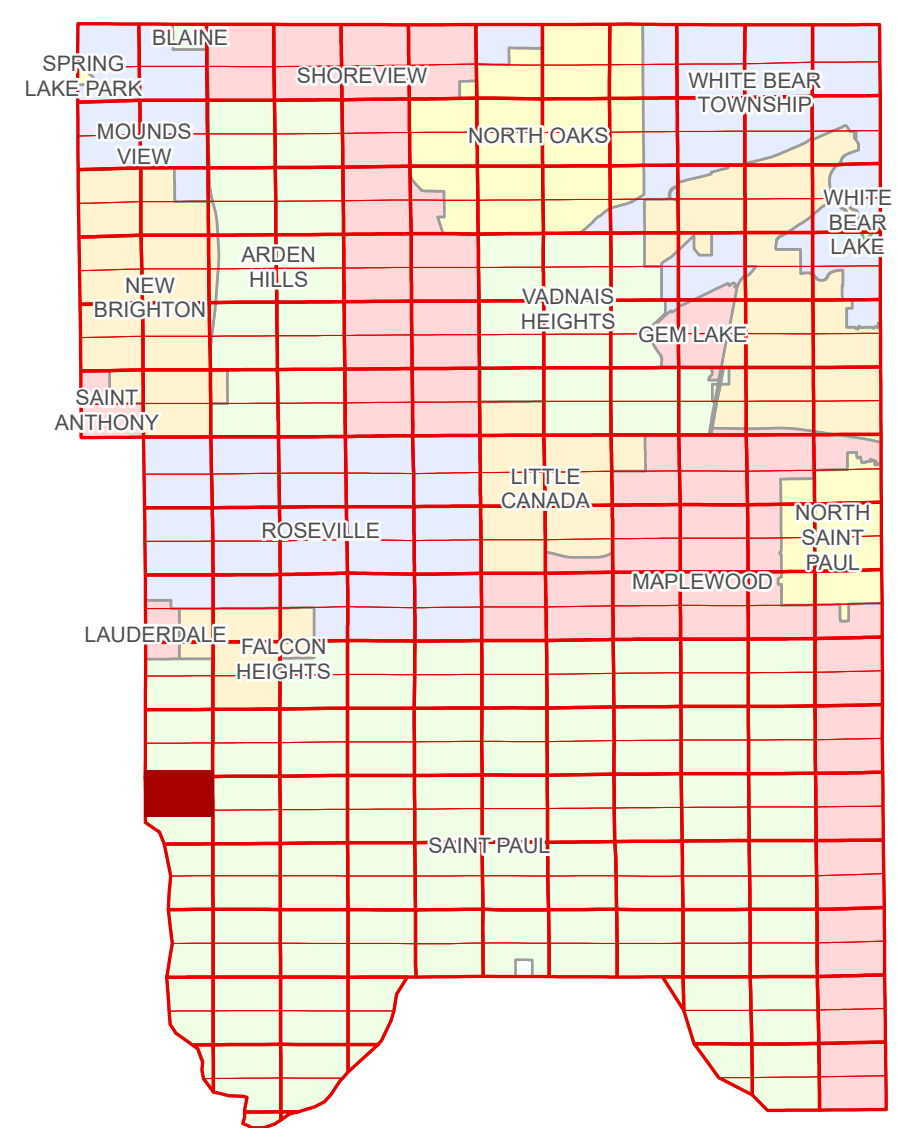


Ramsey County Minnesota Parcel Map

Ramsey County
Section 29

N Half
Section 32
T 29 N
R 23 W



Legend

Section	Metes & Bounds
Quarter	Tax Parcel Type
Quarter Quarter	Personal Property
Federal Right of Way	State Assessed Property
State Right of Way	Real Property
County Right of Way	Easement Type
Municipal Right of Way	Private Access
Subdivision Type	Private Driveway
Subdivision Plat	Utility, Gas & Oil
Registered Land Survey	Drainage & Utility
Division Type	
Lot	

The information on this map is a compilation of Ramsey County Records. THE COUNTY DOES NOT WARRANT OR GUARANTEE THE ACCURACY OF THIS DATA. The County disclaims any liability for any injuries, time delays, or expenses you may suffer if you rely in any manner on the accuracy of this data.

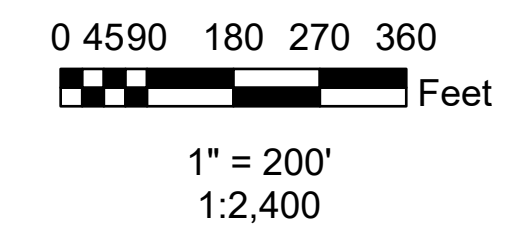
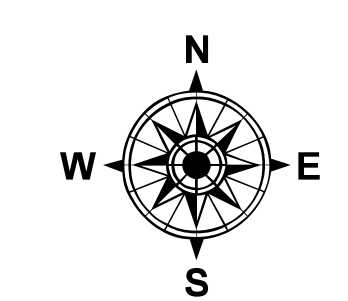
Produced by Information Services Enterprise GIS Division
RCGISMetaData@Co.Ramsey.MN.US

NOTE: This is not an official Ramsey County tax lot map. This is based on the data available in the Geographic Information System, which may vary from tax data officially recorded in the Tax System. For an official tax map, please contact the Office of Property Records and Revenue.

651-266-2000
AskPropertyTaxandRecords@co.ramsey.mn.us

Section 32
Ramsey County

Aerial Imagery Date: March 11 - April 4, 2024



N322923
1/3/2025