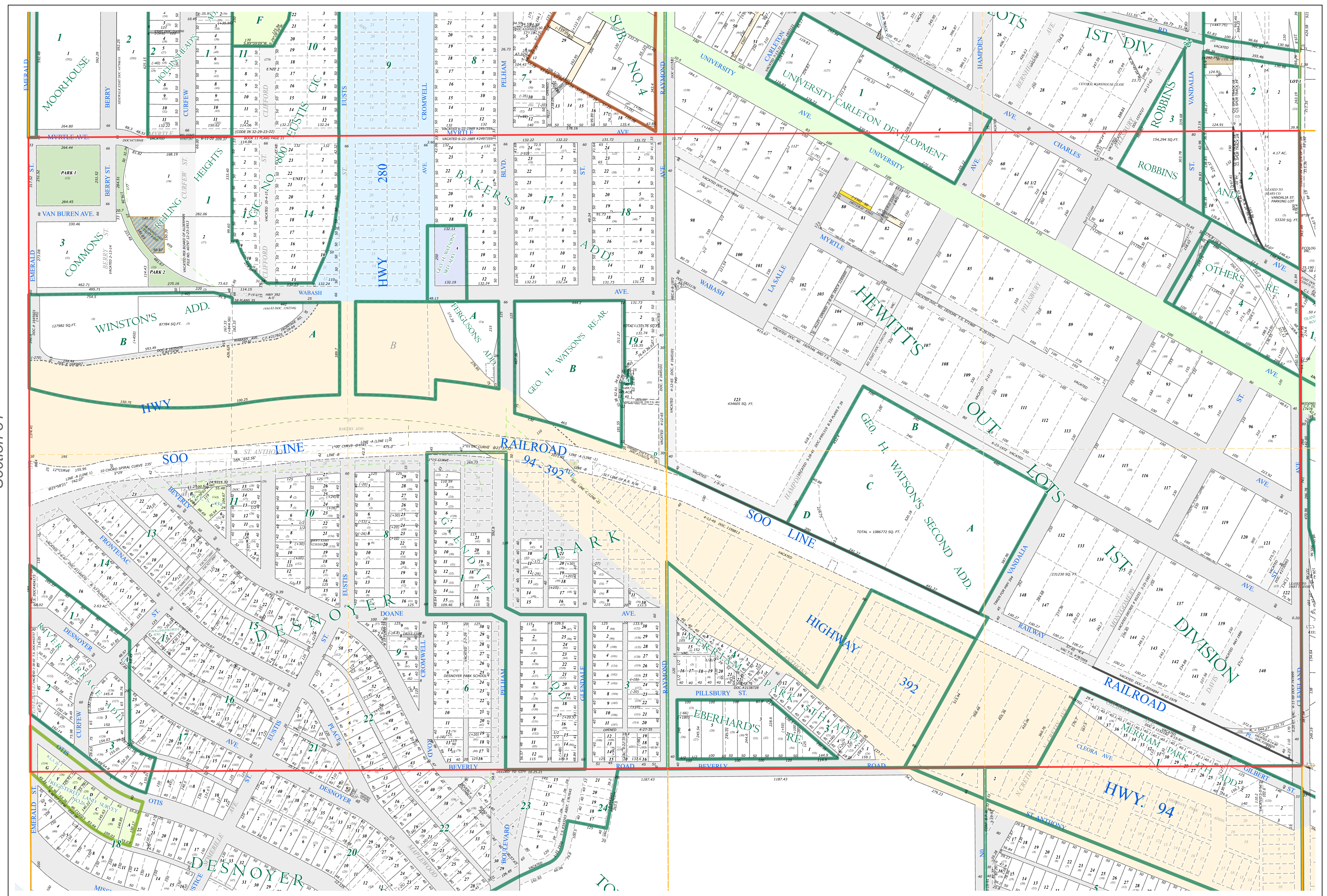
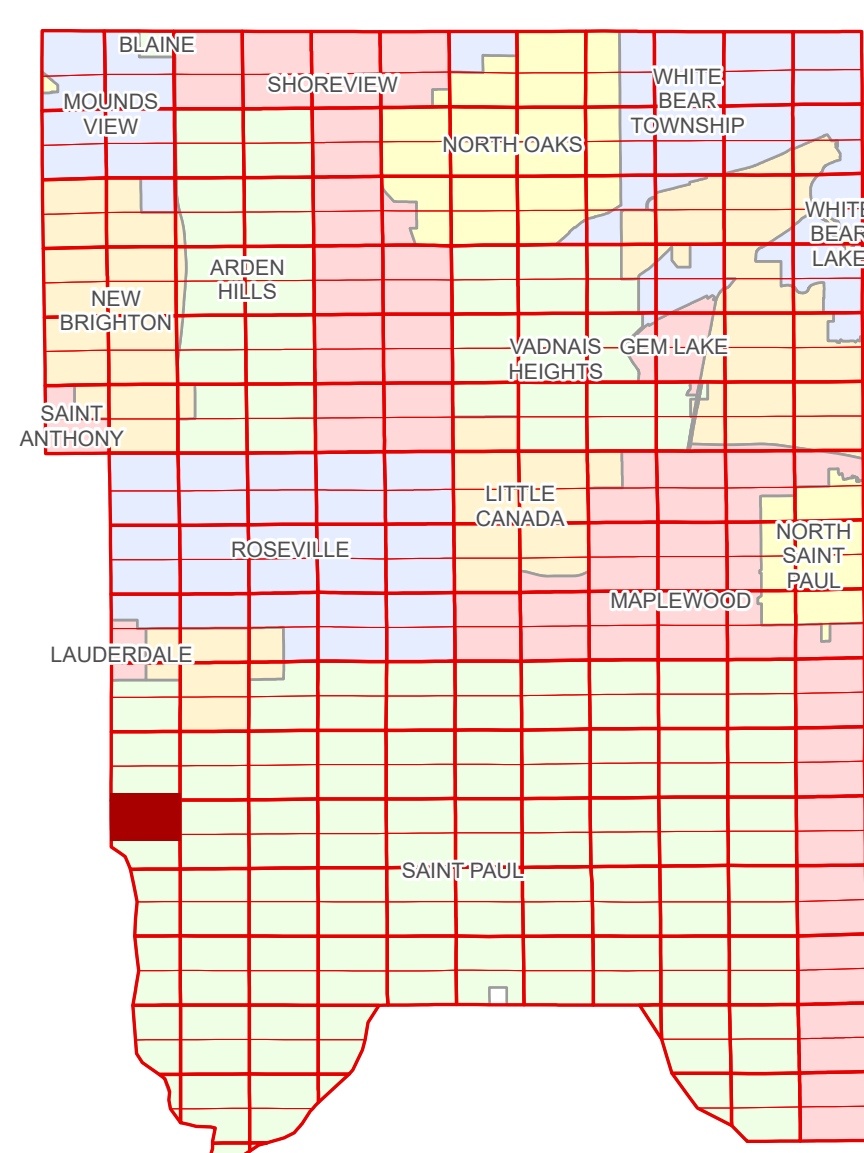


Ramsey County Minnesota Parcel Map

N Half
Section 32
T 29 N
R 23 W

Ramsey County
Section 29



Hennepin County
Section 31

Section 33
Ramsey County

Legend			
	Section		Metes & Bounds
	Quarter		Personal Property
	Quarter Quarter		State Assessed Property
	Federal Right of Way		Real Property
	State Right of Way		Easement Type
	County Right of Way		Private Access
	Municipal Right of Way		Private Driveway
	Subdivision Type		Utility, Gas & Oil
	Subdivision Plat		Drainage & Utility
	Registered Land Survey		
	Division Type		
	Lot		
	Other		
	Outlot		
	Park		
	Tract		

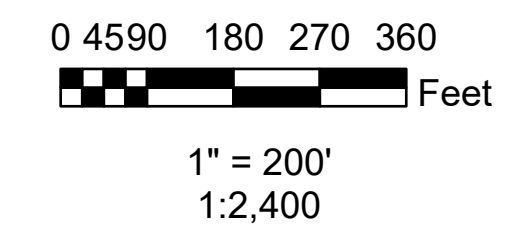
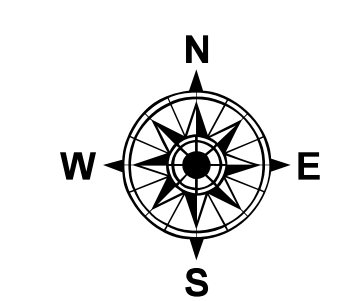
The information on this map is a compilation of Ramsey County Records. THE COUNTY DOES NOT WARRANT OR GUARANTEE THE ACCURACY OF THIS DATA. The County disclaims any liability for any injuries, time delays, or expenses you may suffer if you rely in any manner on the accuracy of this data.

Produced by Information Services Enterprise GIS Division
RCGISMetaData@Co.Ramsey.MN.US

NOTE: This is not an official Ramsey County tax lot map. This is based on the data available in the Geographic Information System, which may vary from tax data officially recorded in the Tax System. For an official tax map, please contact the Office of Property Records and Revenue.

651-266-2000
AskPropertyTaxandRecords@co.ramsey.mn.us

Section 32
Ramsey County



N322923
1/3/2025