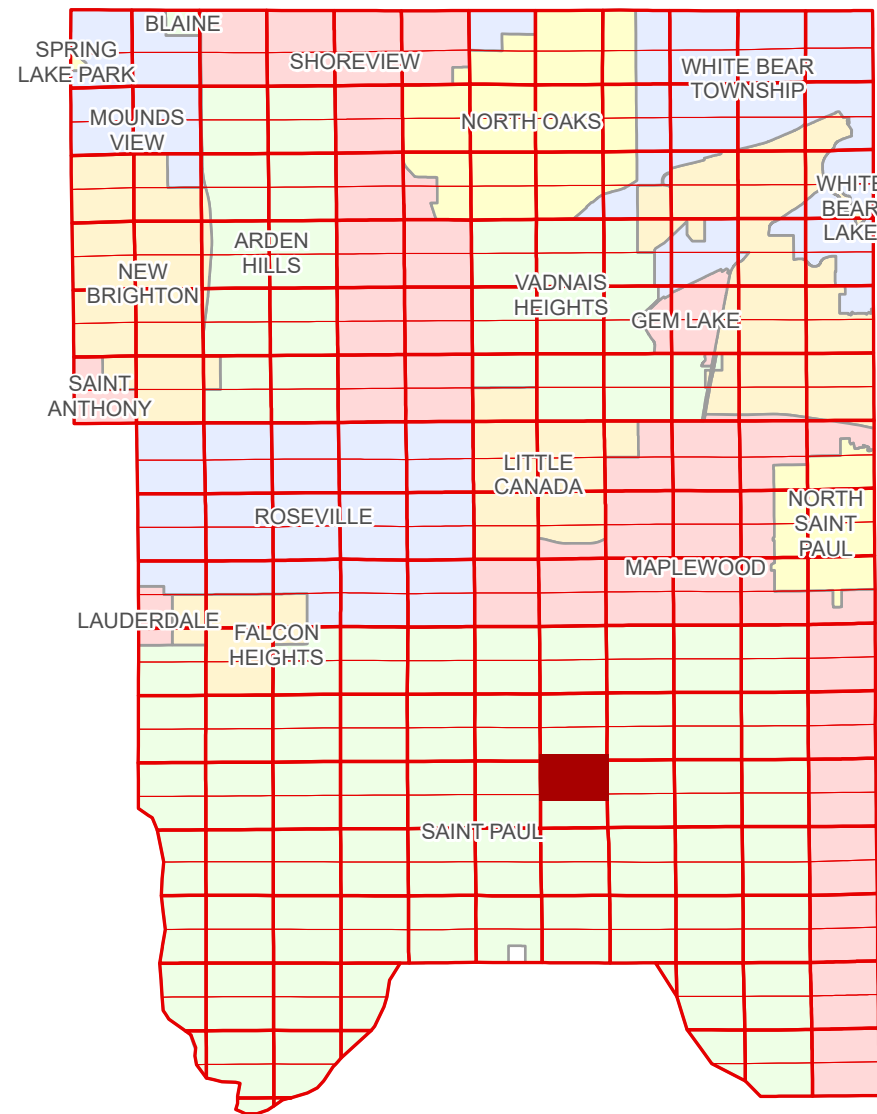


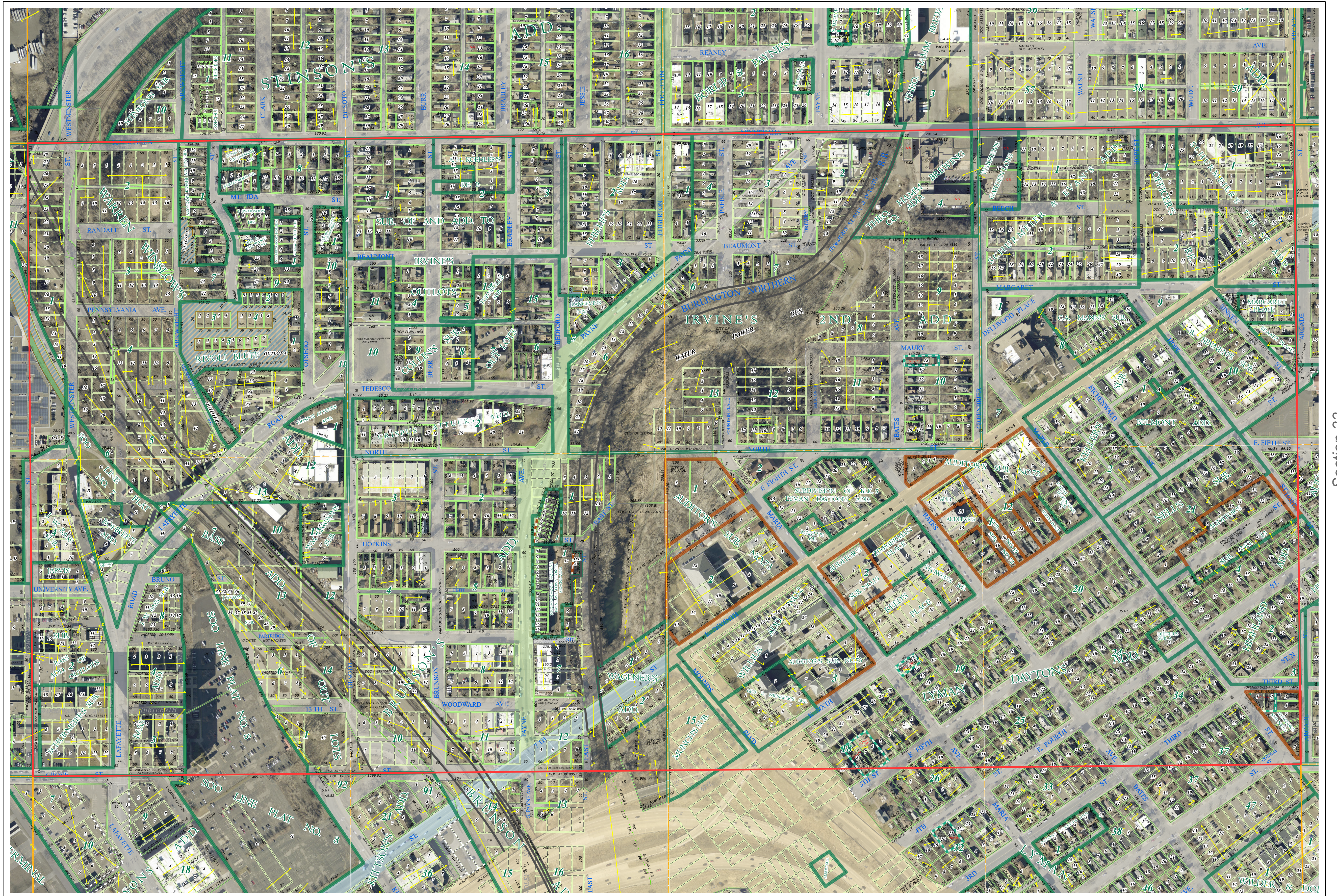
# Ramsey County Minnesota Parcel Map

Ramsey County  
Section 29

N Half  
Section 32  
T 29 N  
R 22 W



Ramsey County  
Section 31



Section 33  
Ramsey County

Legend			
	Section		Division Type
	Quarter		Lot
	Quarter Quarter		Metes & Bounds
	Federal Right of Way		Tax Parcel Type
	State Right of Way		Personal Property
	County Right of Way		State Assessed Property
	Municipal Right of Way		Real Property
	Subdivision Type		Private Driveway
	Subdivision Plat		Utility, Storm & Sanitary Sewer
	Auditors's Subdivision		Drainage & Utility
	Planned Community		Drainage
	Condominium		Misc Easements

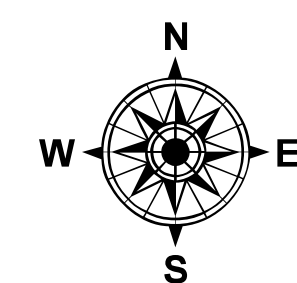
Aerial Imagery Date: March 11 - April 4, 2024



The information on this map is a compilation of Ramsey County Records. THE COUNTY DOES NOT WARRANT OR GUARANTEE THE ACCURACY OF THIS DATA. The County disclaims any liability for any injuries, time delays, or expenses you may suffer if you rely in any manner on the accuracy of this data.  
Produced by Information Services Enterprise GIS Division  
RCGISMetaData@Co.Ramsey.MN.US

NOTE: This is not an official Ramsey County tax lot map. This is based on the data available in the Geographic Information System, which may vary from tax data officially recorded in the Tax System. For an official tax map, please contact the Office of Property Records and Revenue.  
651-266-2000  
AskPropertyTaxandRecords@co.ramsey.mn.us

Section 32  
Ramsey County



0 4590 180 270 360  
Feet

1" = 200'  
1:2,400

N322922

1/3/2025