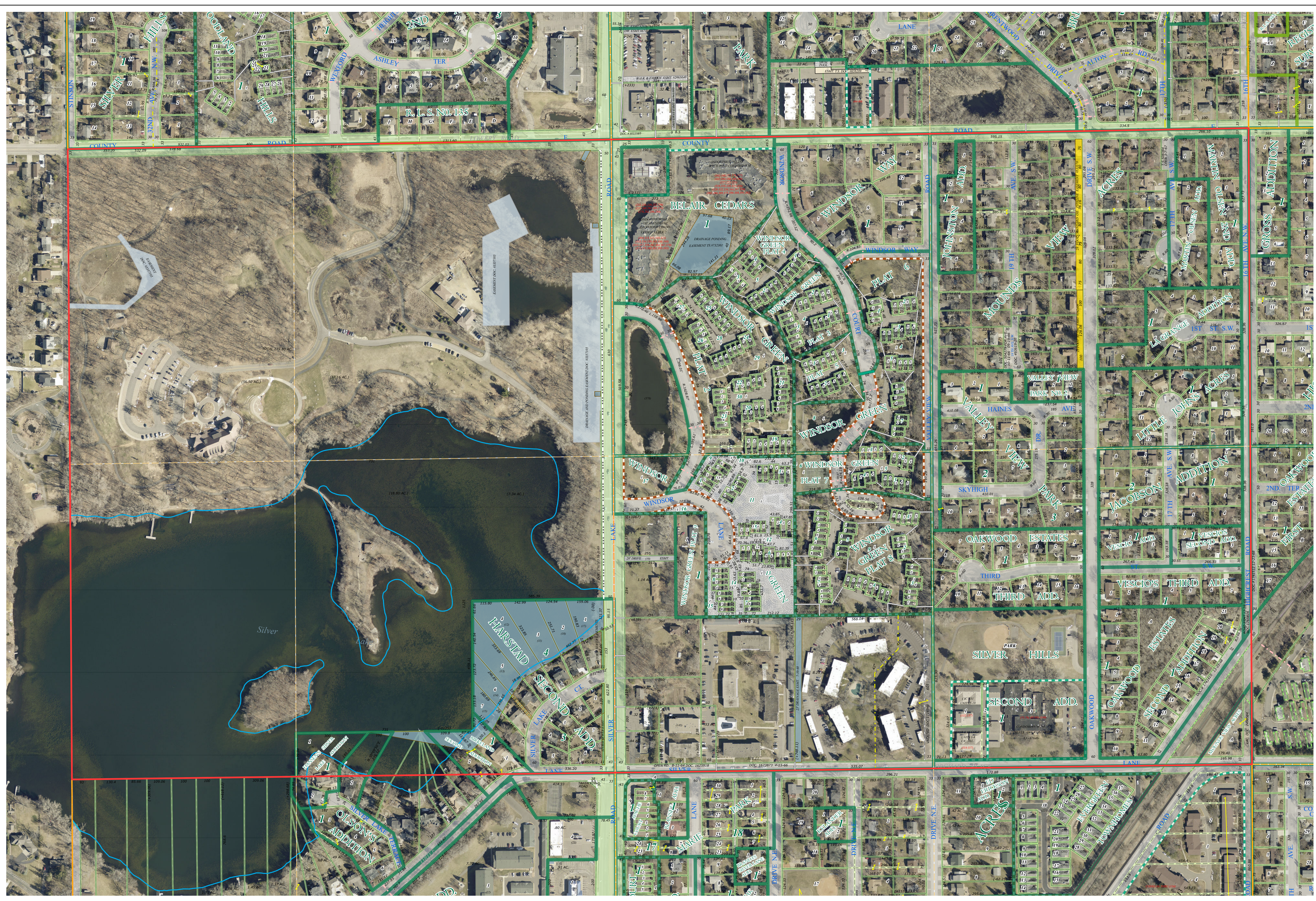
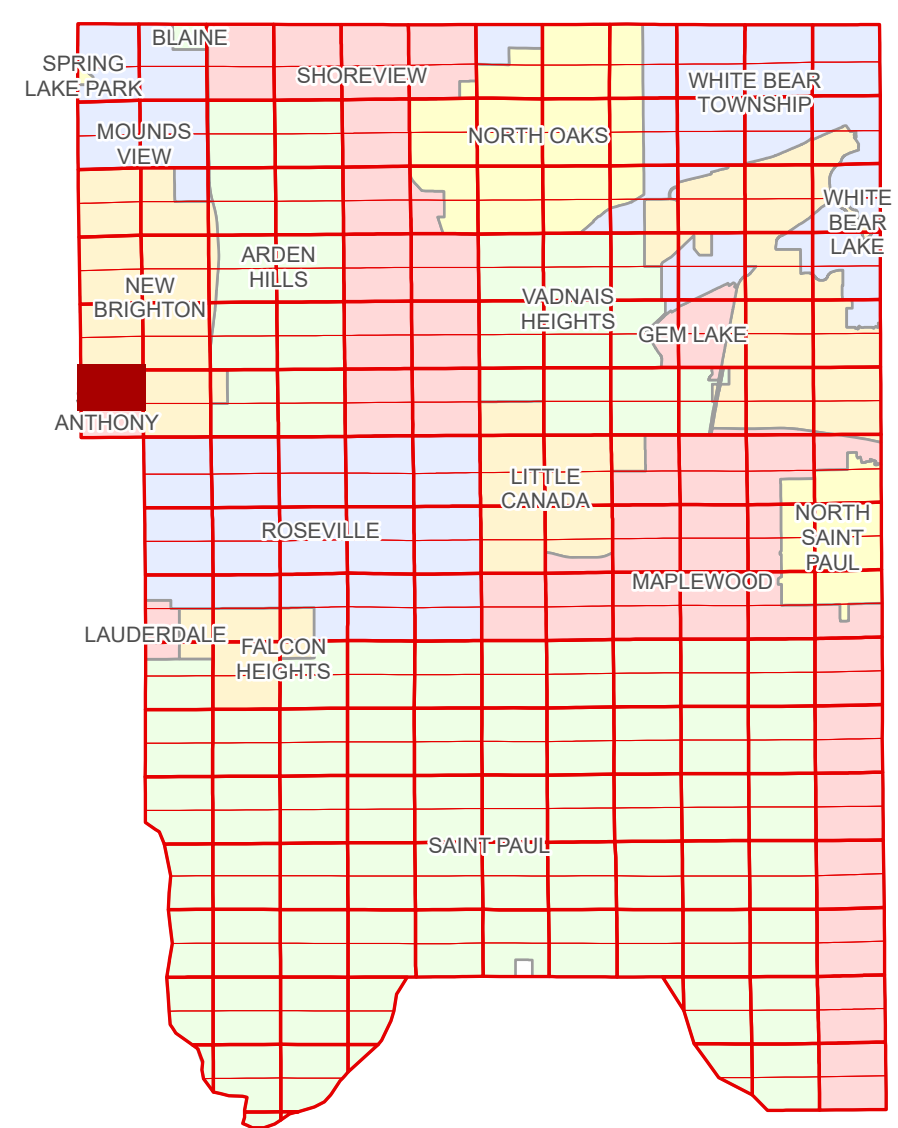


Ramsey County Minnesota Parcel Map

N Half
Section 31
T 30 N
R 23 W

Ramsey County
Section 30



Anoka County
Section 36

Section 32
Ramsey County

Legend

Section	Metes & Bounds
Quarter	Tax Parcel Type
Quarter Quarter	State Assessed Property
County Right of Way	Real Property
Municipal Right of Way	Easement Type
Subdivision Type	Ponding
Subdivision Plat	Private Driveway
Registered Land Survey	Utility, Gas & Oil
Planned Community	Utility, Storm & Sanitary Sewer
Condominium	Drainage & Utility
Division Type	Drainage
Lot	Misc Easements

The information on this map is a compilation of Ramsey County Records. THE COUNTY DOES NOT WARRANT OR GUARANTEE THE ACCURACY OF THIS DATA. The County disclaims any liability for any injuries, time delays, or expenses you may suffer if you rely in any manner on the accuracy of this data.

Produced by Information Services Enterprise GIS Division
RCGISMetaData@Co.Ramsey.MN.US

NOTE: This is not an official Ramsey County tax lot map. This is based on the data available in the Geographic Information System, which may vary from tax data officially recorded in the Tax System. For an official tax map, please contact the Office of Property Records and Revenue.

651-266-2000
AskPropertyTaxandRecords@co.ramsey.mn.us

Section 31
Ramsey County

Aerial Imagery Date: March 11 - April 4, 2024



North arrow pointing up.

Scale bar: 0 4590 180 270 360 Feet

1" = 200'
1:2,400

N313023
1/3/2025