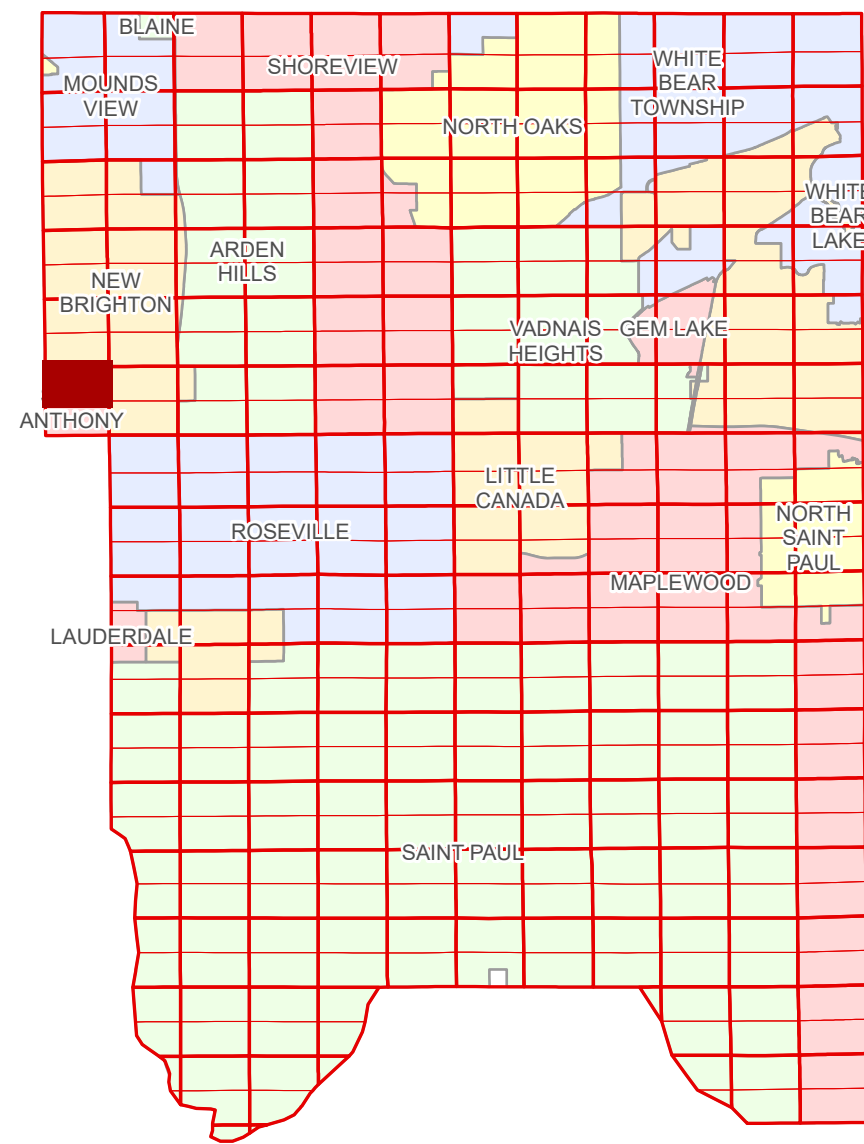


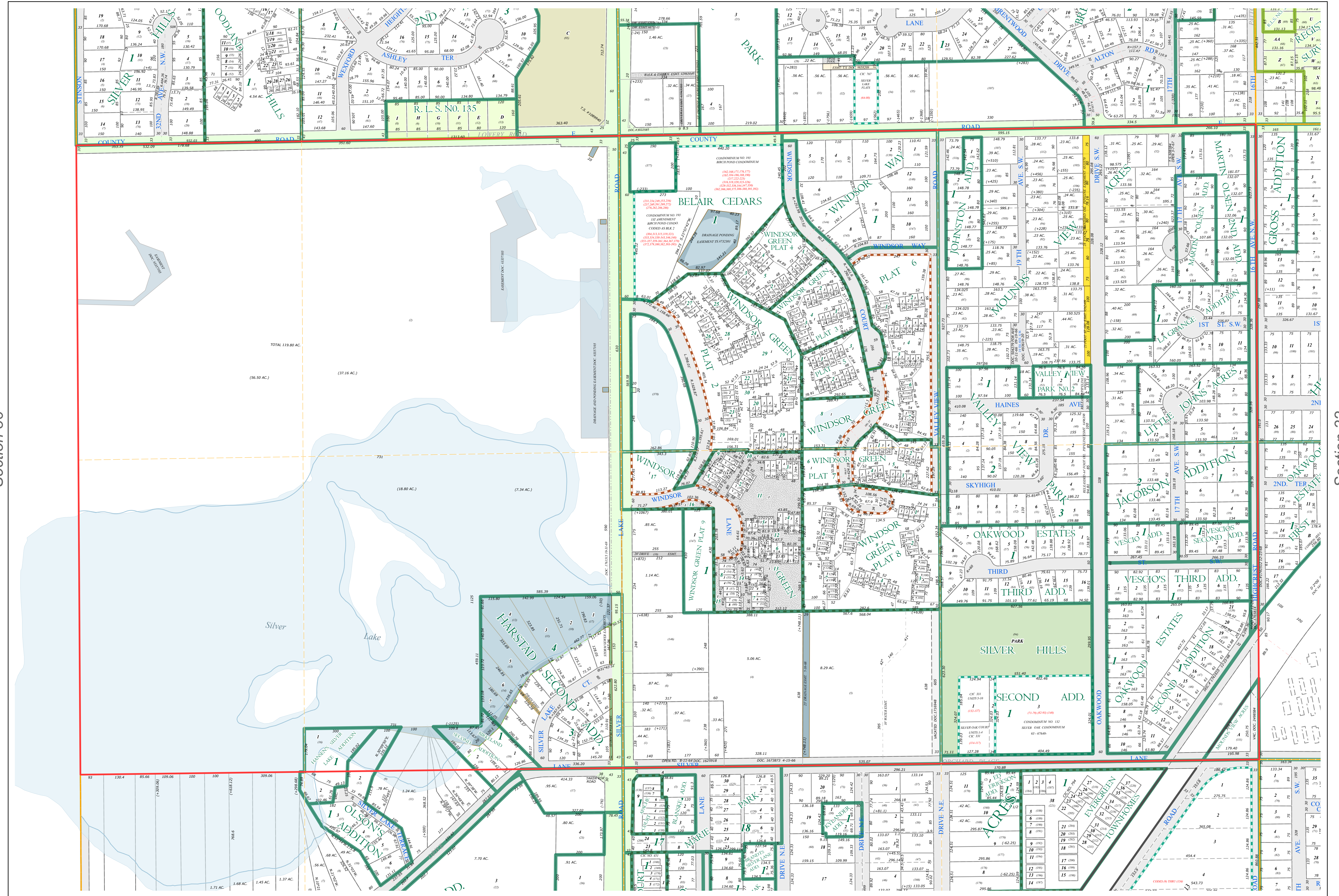
N Half  
Section 31  
T 30 N  
R 23 W

# Ramsey County Minnesota Parcel Map

Ramsey County  
Section 30



Anoka County  
Section 36



Section 32  
Ramsey County

**Legend**

- Section
- Quarter
- Quarter Quarter
- County Right of Way
- Municipal Right of Way
- Subdivision Type
- Subdivision Plat
- Registered Land Survey
- Planned Community
- Condominium
- Division Type
- Lot
- Park
- Tract
- Metes & Bounds
- Tax Parcel Type
- State Assessed Property
- Real Property
- Easement Type
- Ponding
- Private Driveway
- Utility, Gas & Oil
- Utility, Storm & Sanitary Sewer
- Drainage & Utility
- Drainage
- Misc Easements

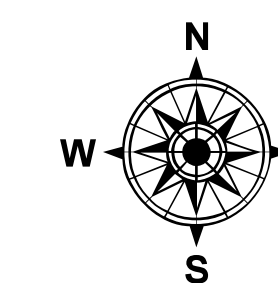
The information on this map is a compilation of Ramsey County Records. THE COUNTY DOES NOT WARRANT OR GUARANTEE THE ACCURACY OF THIS DATA. The County disclaims any liability for any injuries, time delays, or expenses you may suffer if you rely in any manner on the accuracy of this data.

Produced by Information Services Enterprise GIS Division  
RCGISMetaData@Co.Ramsey.MN.US

NOTE: This is not an official Ramsey County tax lot map. This is based on the data available in the Geographic Information System, which may vary from tax data officially recorded in the Tax System. For an official tax map, please contact the Office of Property Records and Revenue.

651-266-2000  
AskPropertyTaxandRecords@co.ramsey.mn.us

Section 31  
Ramsey County



0 4590 180 270 360  
Feet

1" = 200'  
1:2,400

N313023

1/3/2025