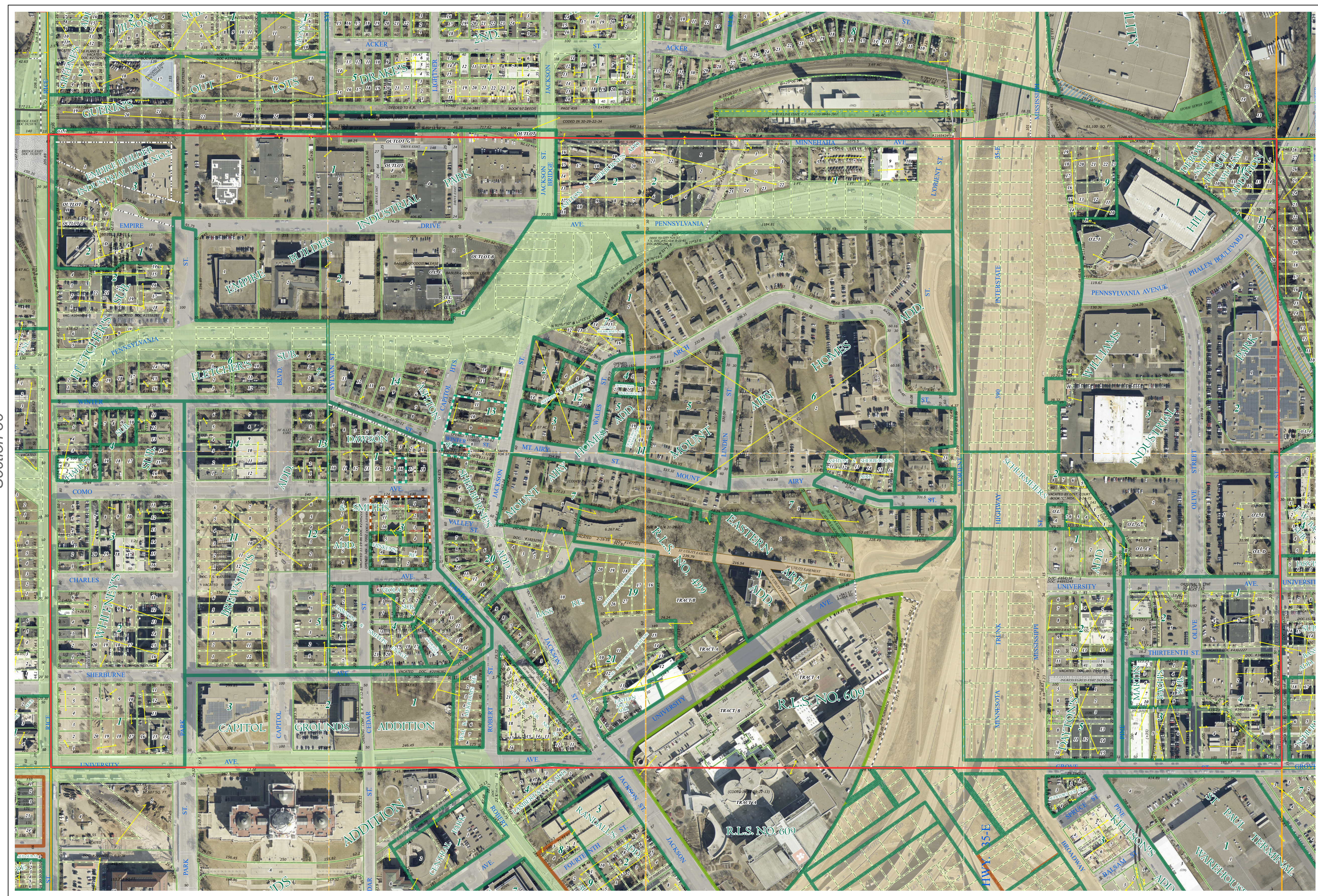
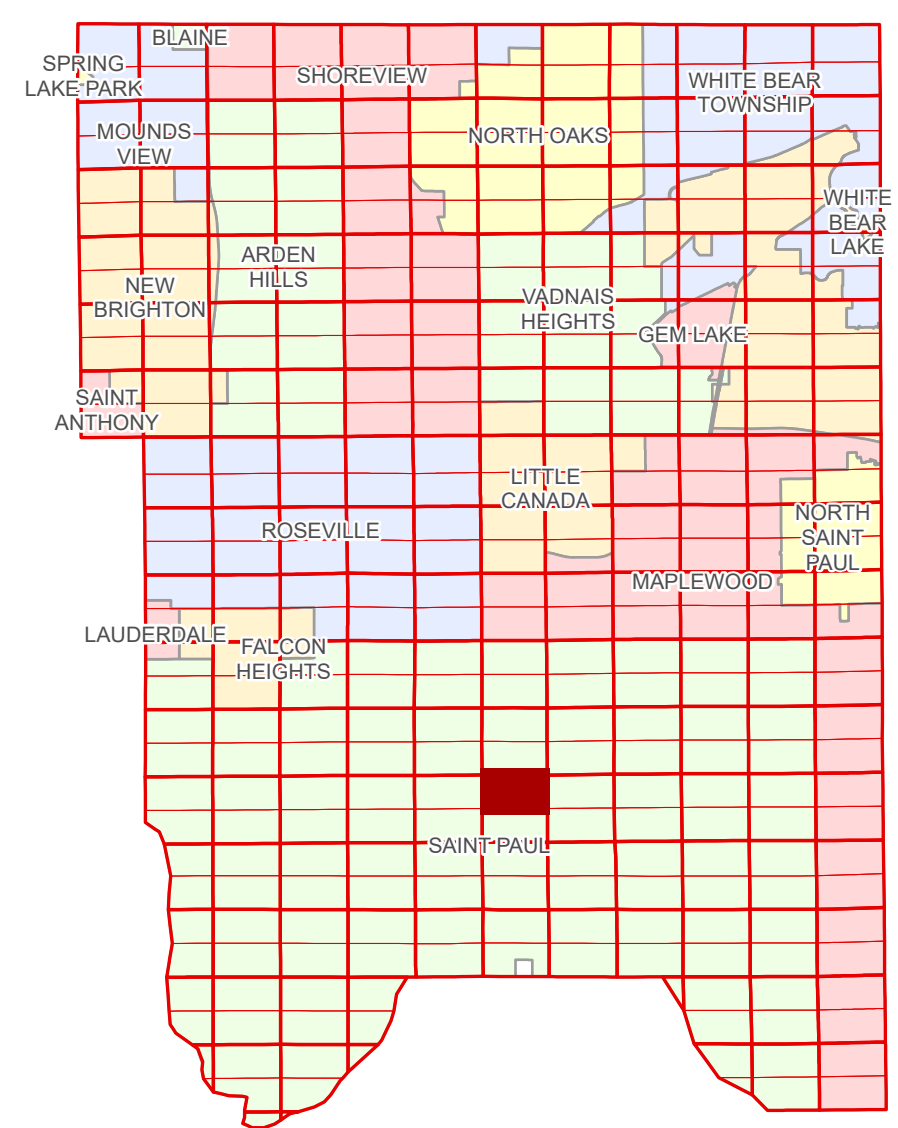


Ramsey County Minnesota Parcel Map

N Half
Section 31
T 29 N
R 22 W

Ramsey County
Section 30



Ramsey County
Section 36

Section 32
Ramsey County

Legend	
	Section
	Quarter
	Quarter Quarter
	Federal Right of Way
	County Right of Way
	Municipal Right of Way
	Subdivision Plat
	Registered Land Survey
	Auditors's Subdivision
	Planned Community
	Condominium
	Lot
	Metes & Bounds
	Personal Property
	State Assessed Property
	Real Property
	Private Driveway
	Railroad
	Utility, Storm & Sanitary Sewer
	Utility, Unidentified
	Drainage & Utility
	Misc Easements

Aerial Imagery Date: March 11 - April 4, 2024



The information on this map is a compilation of Ramsey County Records. THE COUNTY DOES NOT WARRANT OR GUARANTEE THE ACCURACY OF THIS DATA. The County disclaims any liability for any injuries, time delays, or expenses you may suffer if you rely in any manner on the accuracy of this data.

NOTE: This is not an official Ramsey County tax lot map. This is based on the data available in the Geographic Information System, which may vary from tax data officially recorded in the Tax System. For an official tax map, please contact the Office of Property Records and Revenue.

Produced by Information Services Enterprise GIS Division
RCGSMetaData@Co.Ramsey.MN.US

651-266-2000
AskPropertyTaxandRecords@co.ramsey.mn.us

Section 31
Ramsey County



N312922

1/3/2025