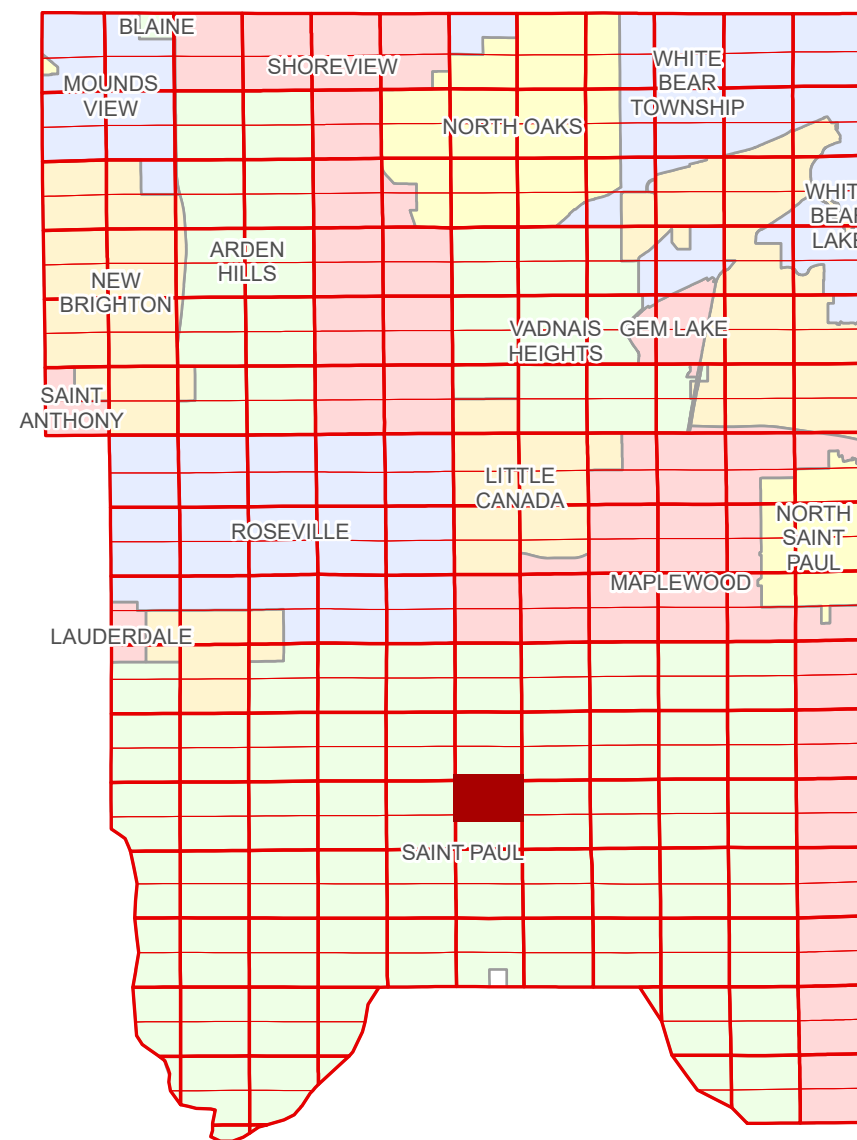


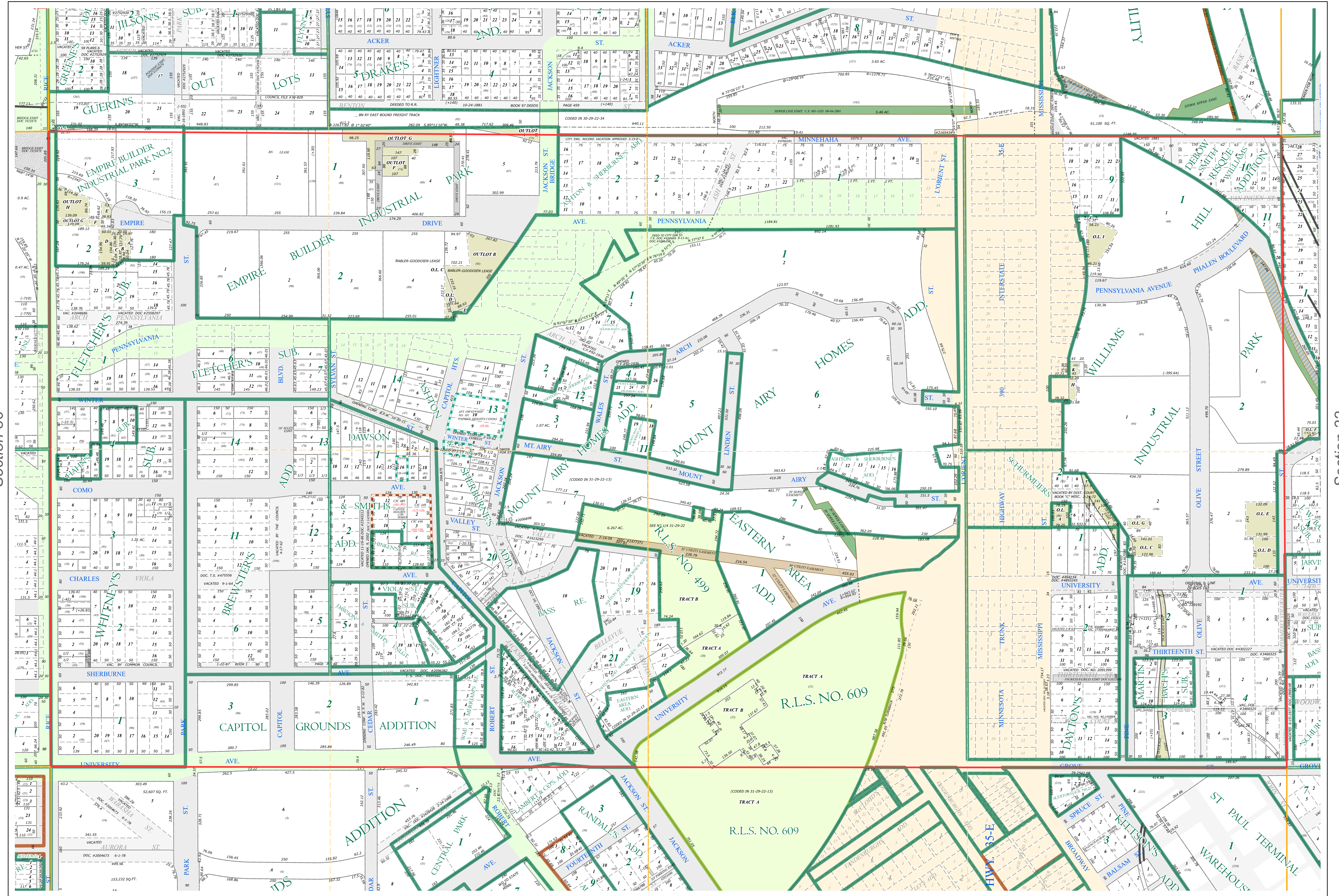
N Half
Section 31
T 29 N
R 22 W

Ramsey County Minnesota Parcel Map

Ramsey County
Section 30



Ramsey County
Section 36



Section 32
Ramsey County

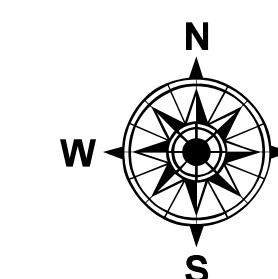
Legend

Section	Metes & Bounds
Quarter	Tax Parcel Type
Quarter Quarter	Personal Property
Federal Right of Way	State Assessed Property
County Right of Way	Real Property
Municipal Right of Way	Easement Type
Subdivision Type	Private Driveway
Subdivision Plat	Railroad
Registered Land Survey	Utility, Storm & Sanitary Sewer
Auditor's Subdivision	Utility, Unidentified
Planned Community	Drainage & Utility
Condominium	Misc Easements
Division Type	
Lot	
Outlot	
Tract	

The information on this map is a compilation of Ramsey County Records. THE COUNTY DOES NOT WARRANT OR GUARANTEE THE ACCURACY OF THIS DATA. The County disclaims any liability for any injuries, time delays, or expenses you may suffer if you rely in any manner on the accuracy of this data.
Produced by Information Services Enterprise GIS Division
RCGSMetaData@Co.Ramsey.MN.US

NOTE: This is not an official Ramsey County tax lot map. This is based on the data available in the Geographic Information System, which may vary from tax data officially recorded in the Tax System. For an official tax map, please contact the Office of Property Records and Revenue.
651-266-2000
AskPropertyTaxandRecords@co.ramsey.mn.us

Section 31
Ramsey County



0 4590 180 270 360 Feet

1" = 200'
1:2,400

N312922

1/3/2025